



1. View from South



2. South Clerestory Windows



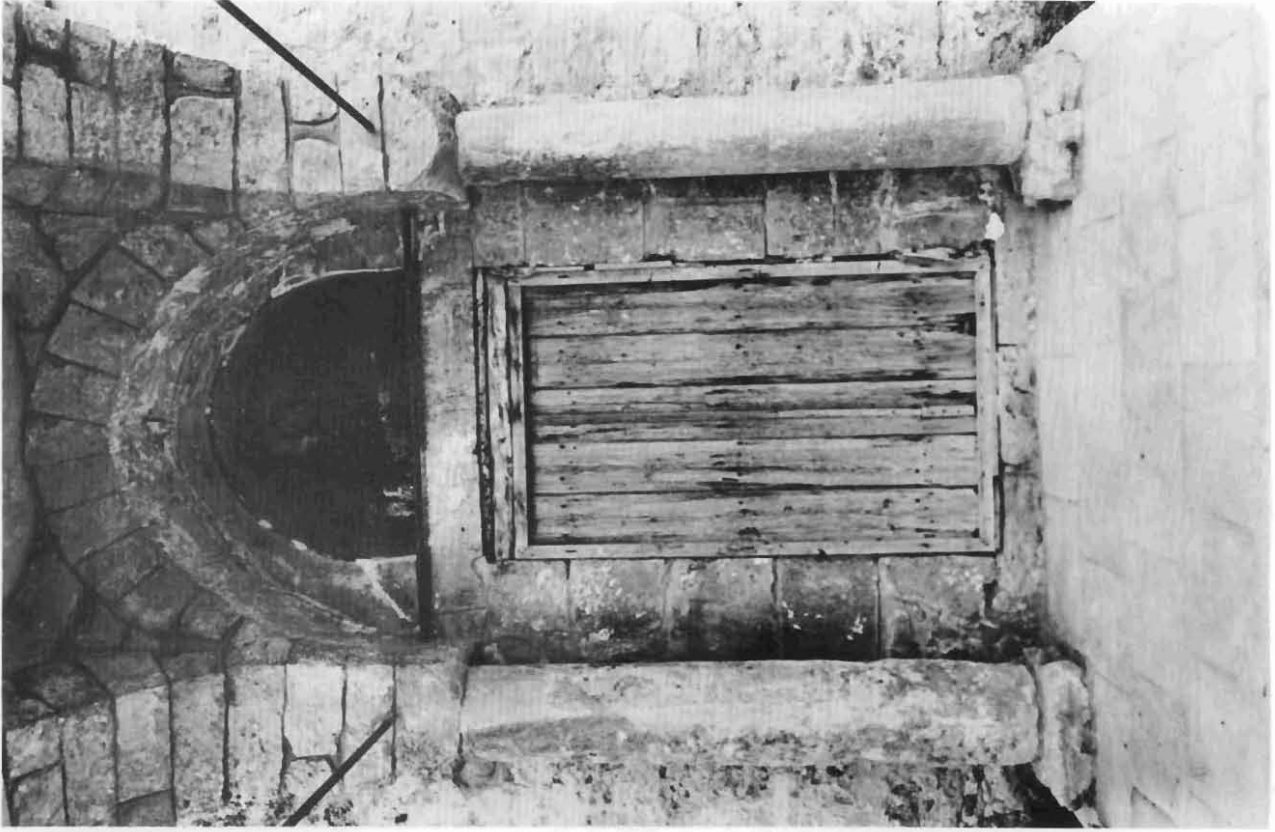
3. View from West



4. View from Southwest



5. View from Southwest



6. Interior

Porch



7. West Gable



8. Inscription of Chrysanthos



9. West Door, Inscription on Jamb



10. View from Northwest



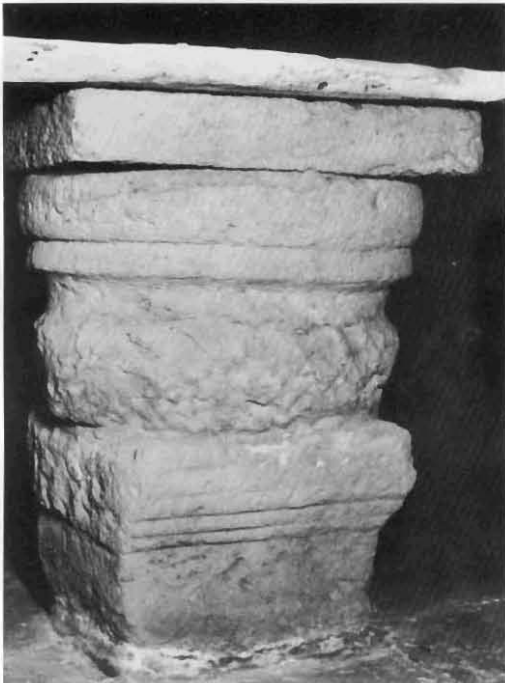
11. View from Northeast



12. Monastery (1970)



13. Column Base near West Door



14. Column Base reused in Altar



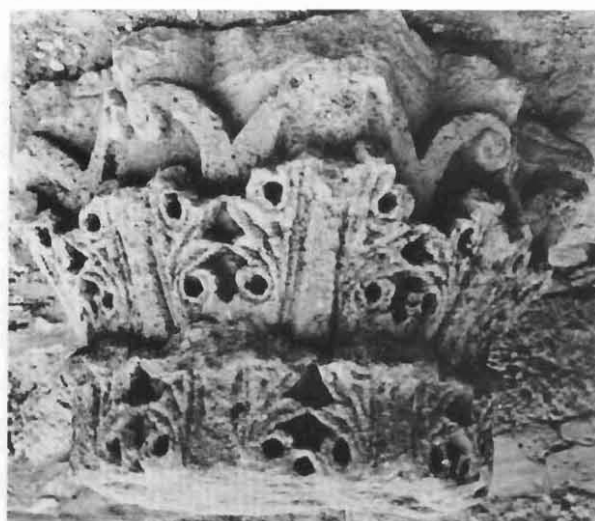
15. Monastery, Portico



16. Porch, Capitals used as Column Bases



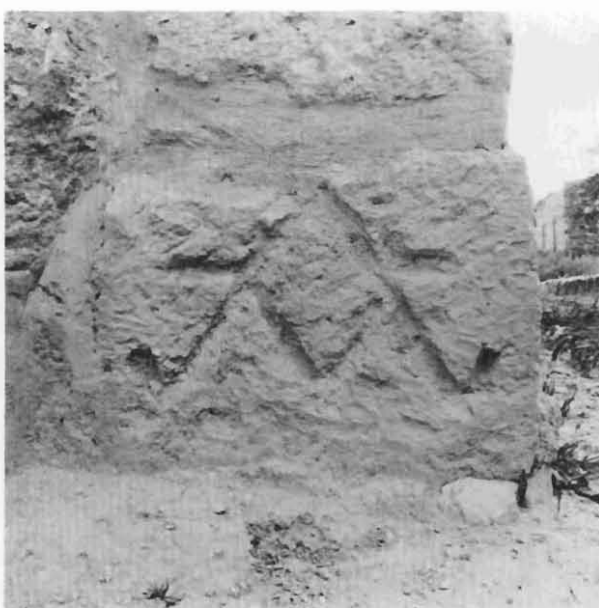
17. Capital North of West Door



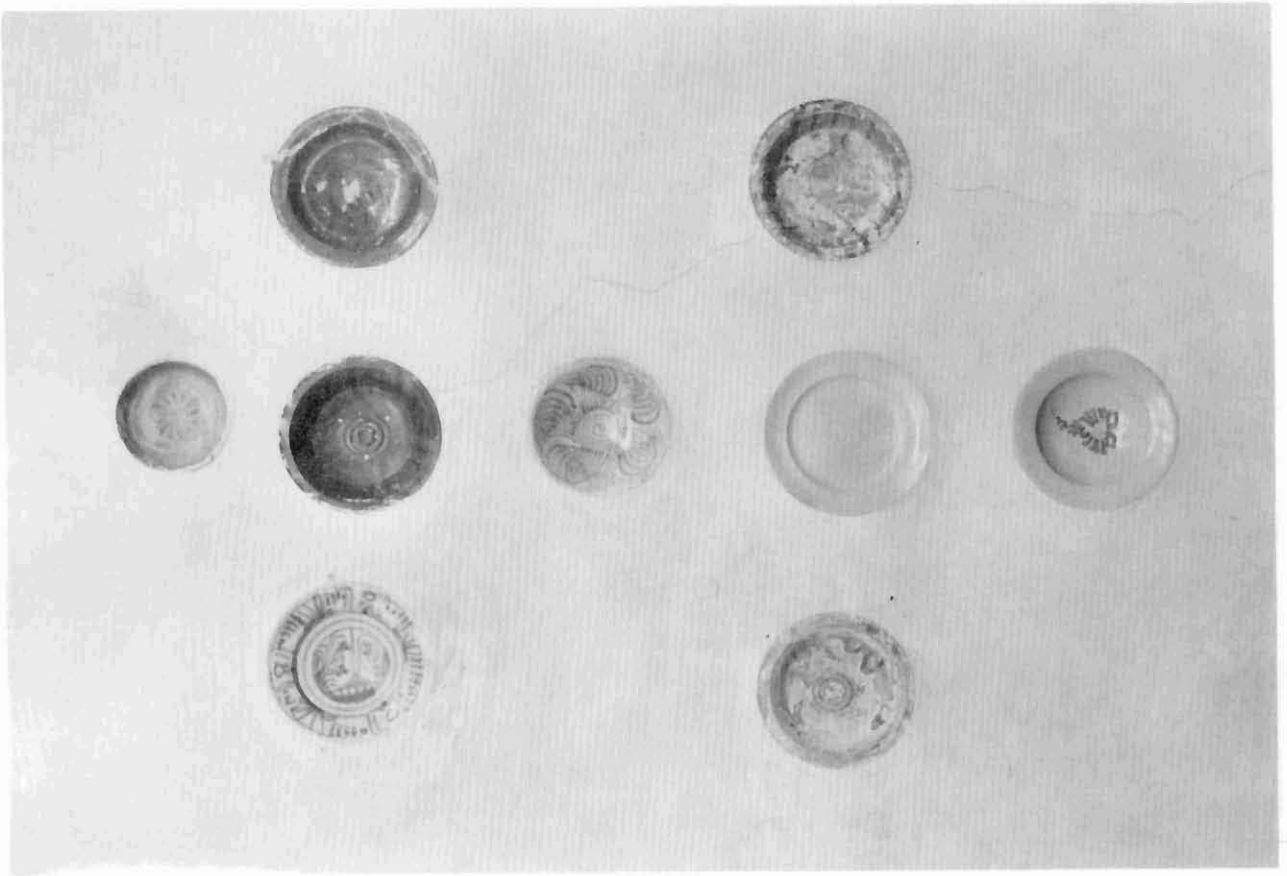
18. Capital South of West Door



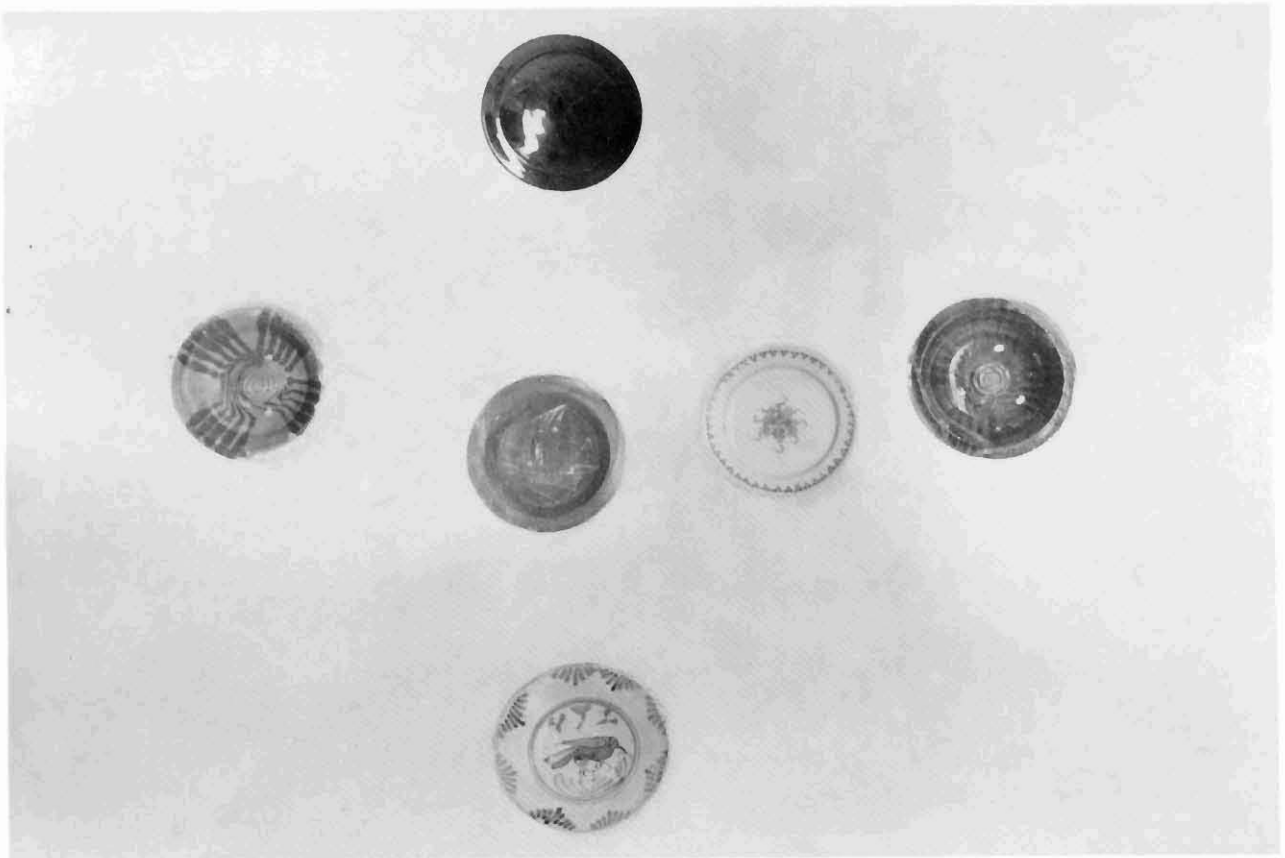
19. Capital outside West Gate



20. Block with Mortar-Grip Channels



21.



22.

Narthex, Plates set in Vault

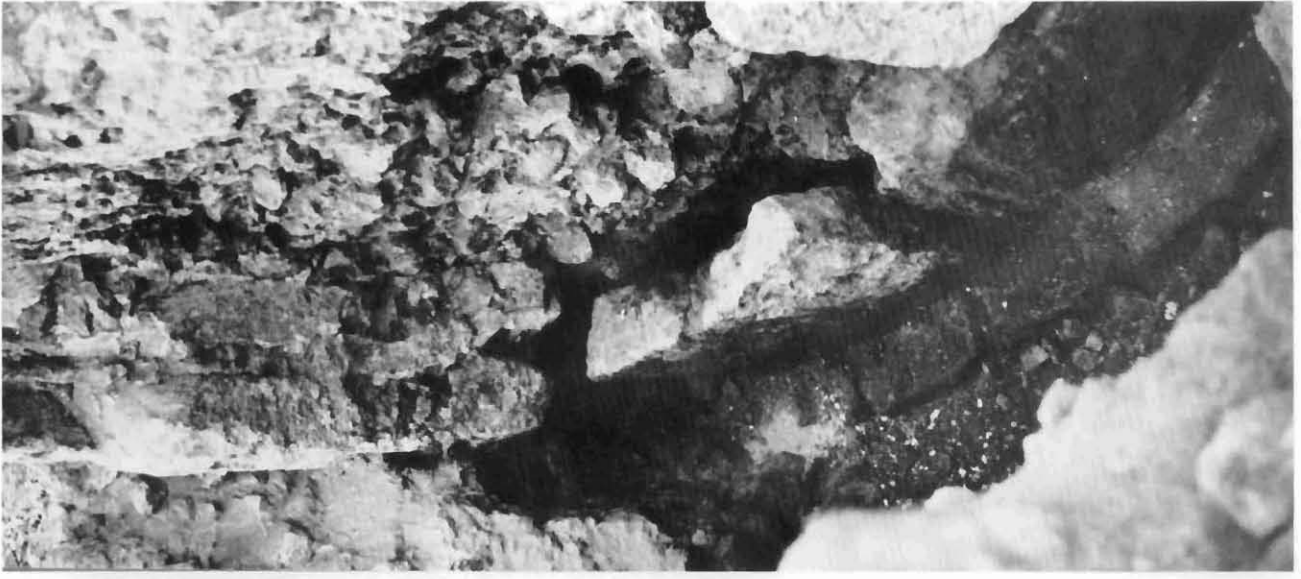




23. During Repair (1954)



24. North Window

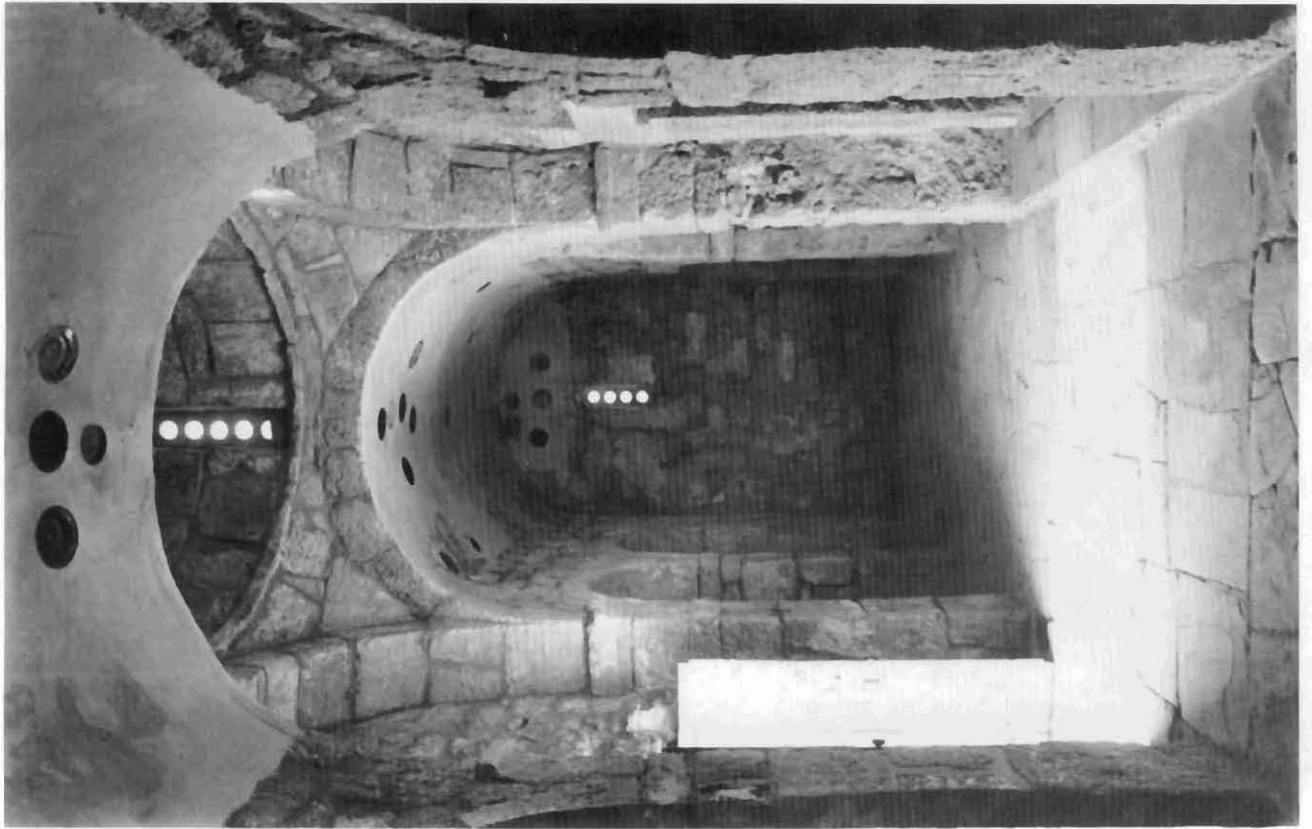


25. Lowest Course

Apse



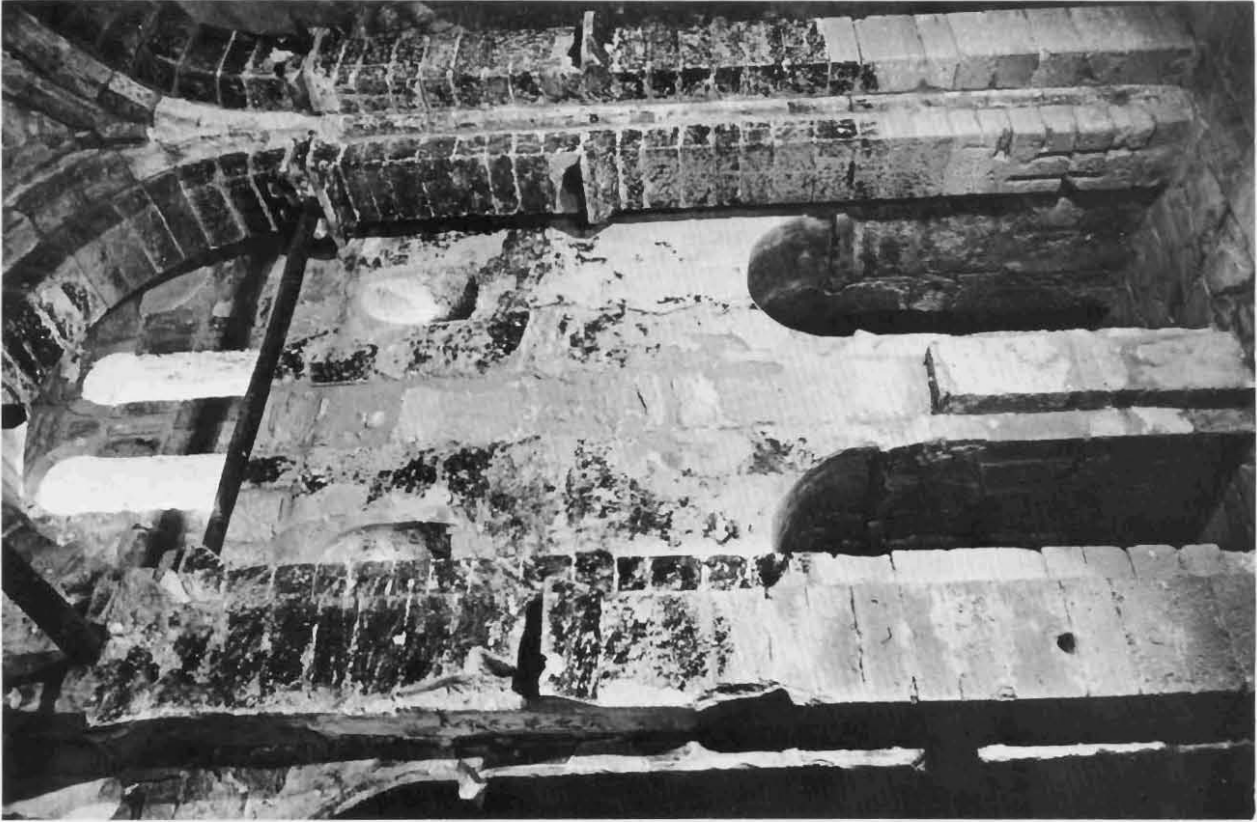
27. Dome Bay



26. Looking North



29. West End



28. Dome Bay

Nave, South Side

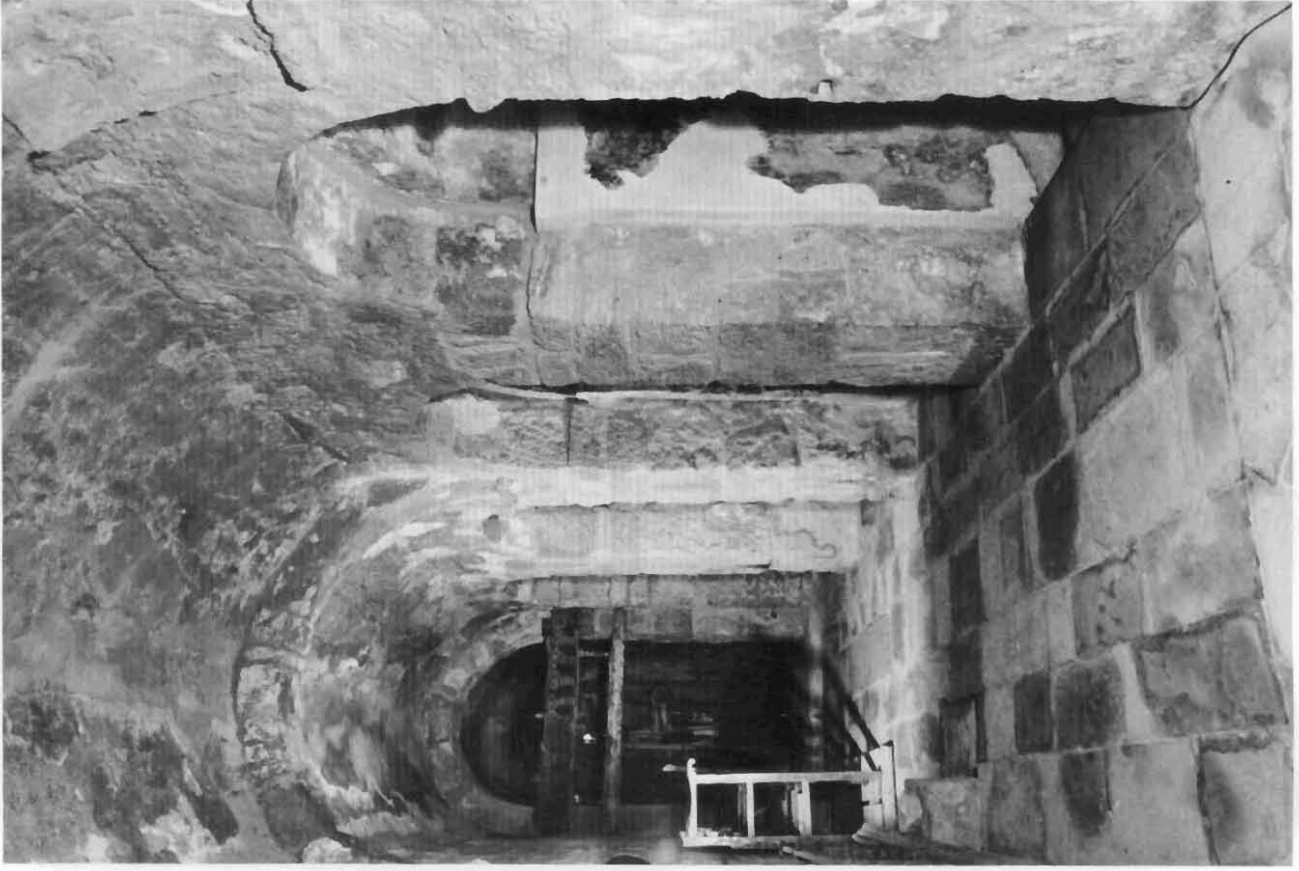


30. Dome Bay

Nave, North Side



31. East Bay



33. Looking East



32. Looking West

North Aisle



34. Looking East

South Aisle



35. Looking West



36. Vaulting, East End, and Bema



37. South Arcade, West End

Nave



38. Nave and Bema, looking East