

Detroit

από την υποβάθμιση στην αστική αναγέννηση
ο ρόλος της συμμετοχής των πολιτών και των
περιβαλλοντικών δράσεων

01

το ευρύτερο ιστορικό πλαίσιο



102 km

Image Landsat

Image NOAA



Γηγενείς Iroquois διεξάγουν εμπόριο με τους Ευρωπαίους (1722)

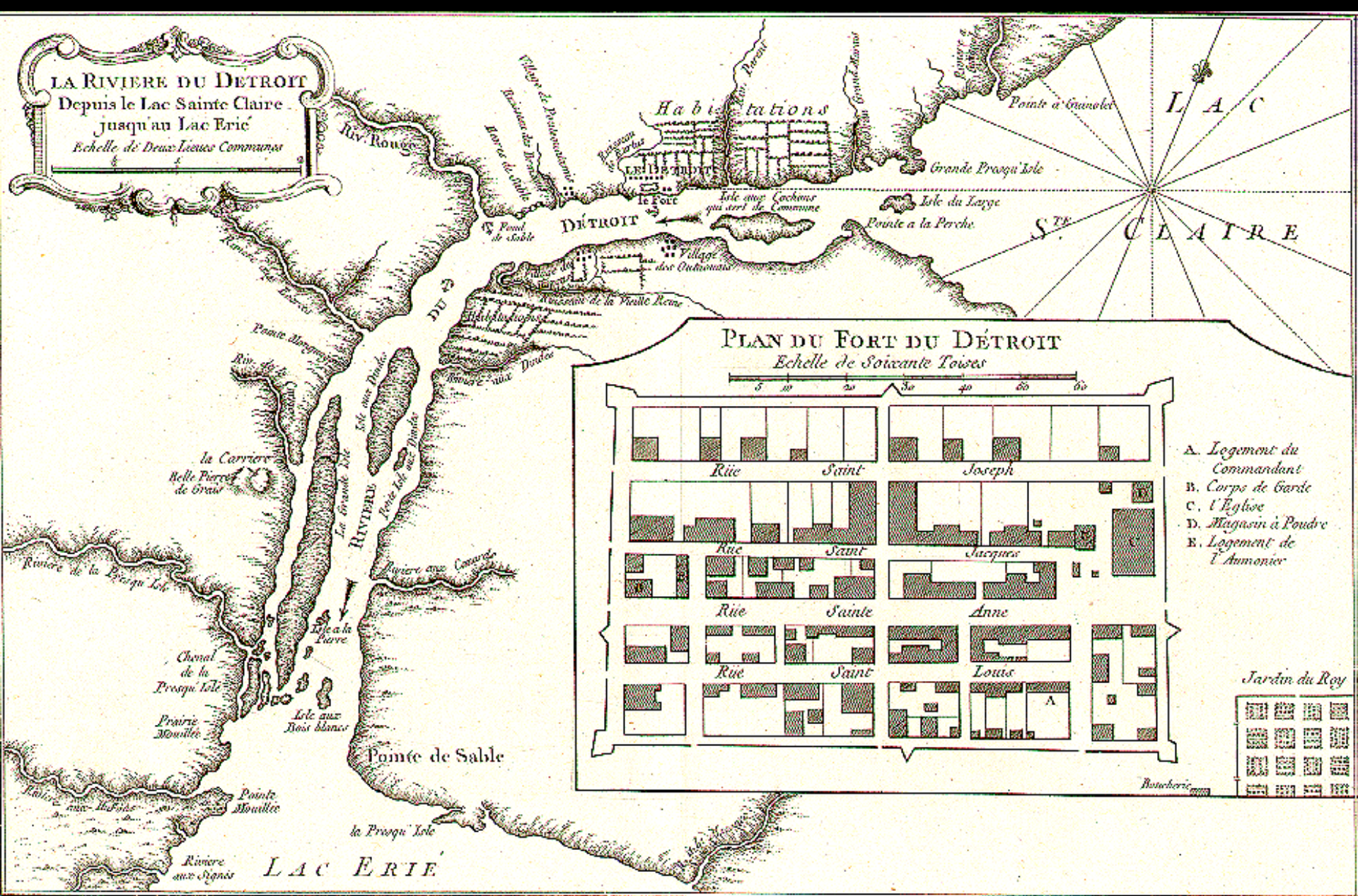


Κτήσεις των Βρετανών (κόκκινο), Γάλλων (μπλε) και Ισπανών (πράσινο) το 1750 στη Βόρεια Αμερική

LA RIVIERE DU DETROIT

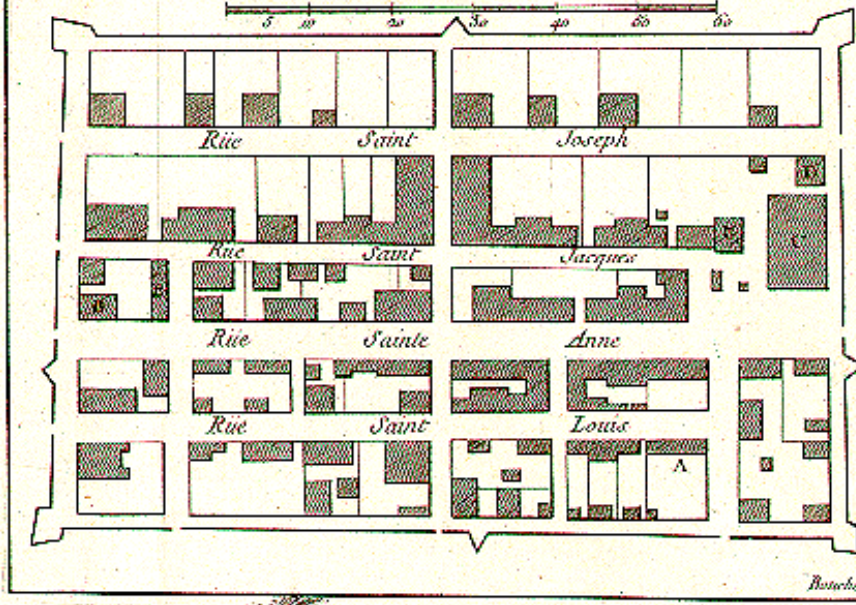
Depuis le Lac Sainte Claire
jusqu'au Lac Erie

Echelle de Deux Lieues Communes



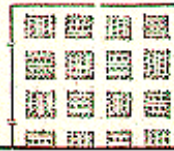
PLAN DU FORT DU DETROIT

Echelle de Soixante Toises

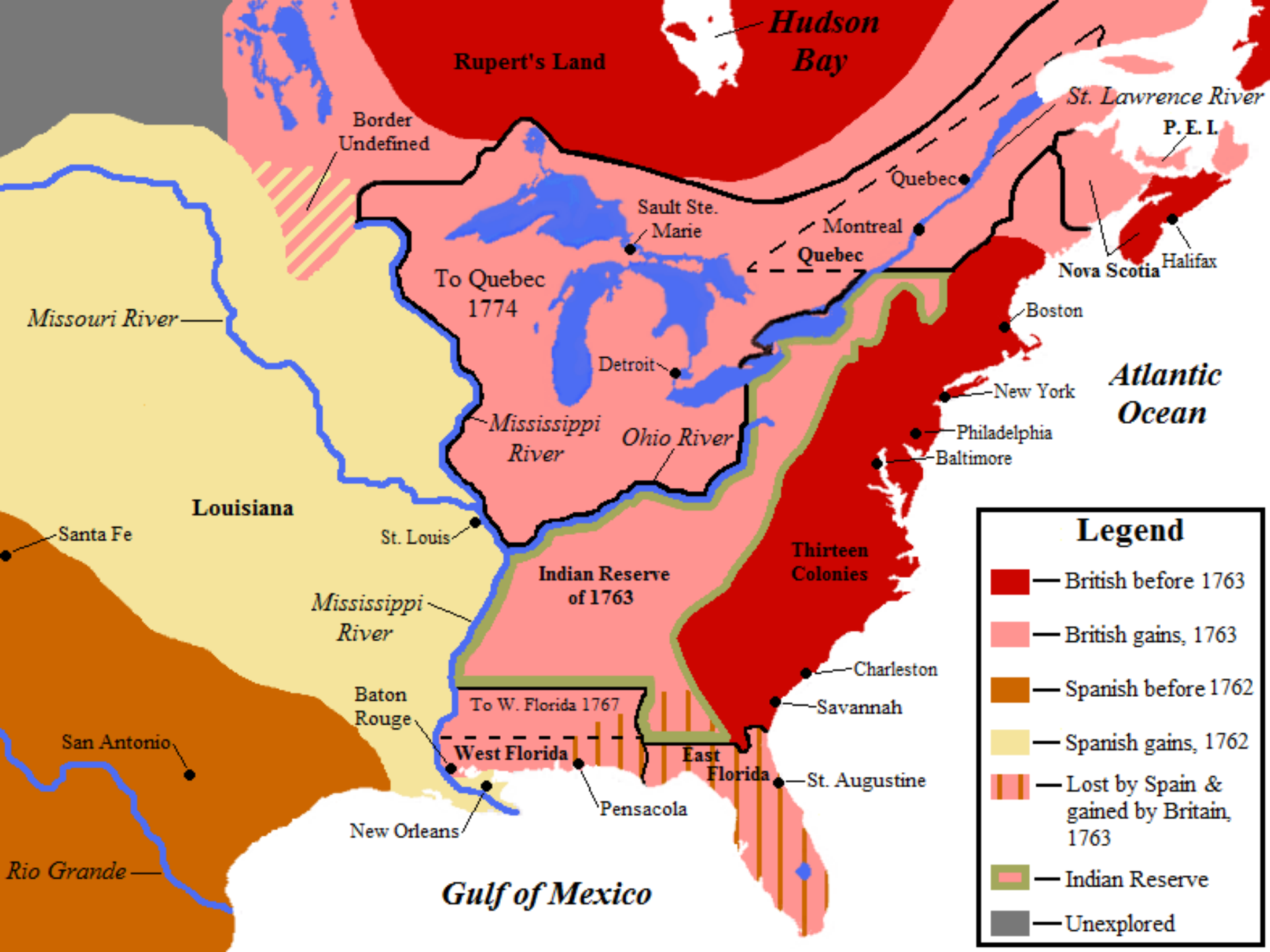


- A. Logement du Commandant
- B. Corps de Garde
- C. l'Eglise
- D. Magasin à Poudre
- E. Logement de l'Ammonier

Jardin du Roy



Fort Pontchartrain du Détroit 1764



Legend

- British before 1763
- British gains, 1763
- Spanish before 1762
- Spanish gains, 1762
- Lost by Spain & gained by Britain, 1763
- Indian Reserve
- Unexplored

02

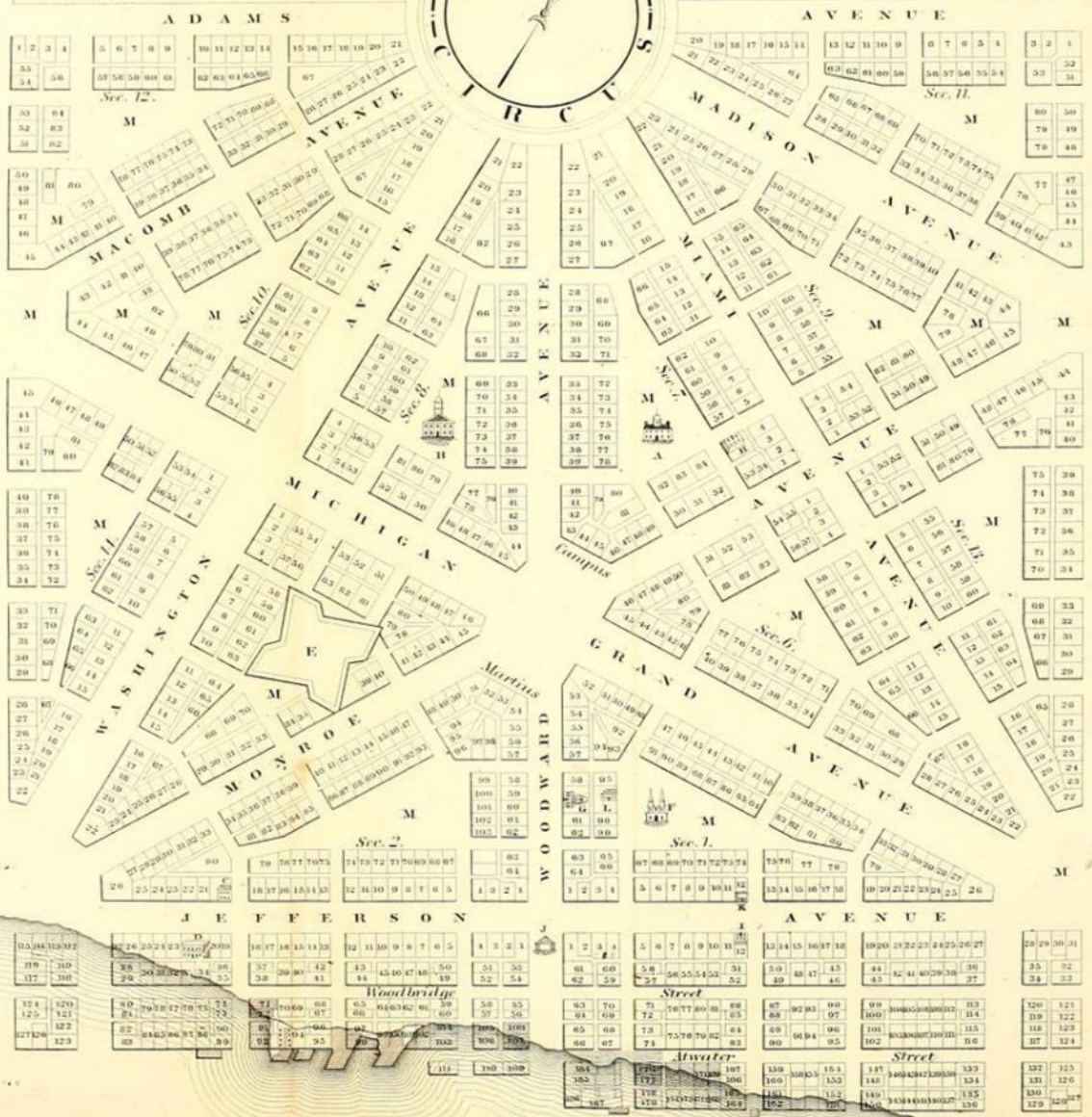
ο 19^{ος} αιώνας: η πορεία προς την ακμή

References.

- A. Postoffice
- B. Capitol
- C. U.S. Arsenal
- D. U.S. State House
- E. Fort Shelby
- F. Catholic Church
- G. Protestant Church
- H. Methodist Meeting House
- I. Council House
- J. Market House
- K. Theatre
- L. Academy
- M. Public Reservations

Scale of 500 Feet to an Inch.
 50 100 150 200 250 300 350 400 450 500

PLAN OF DETROIT



Το πρώτο σχέδιο του Detroit του Augustus Woodward μετά την πυρκαγιά του 1805

MAP
of the
CITY OF DETROIT
IN THE
STATE OF MICHIGAN

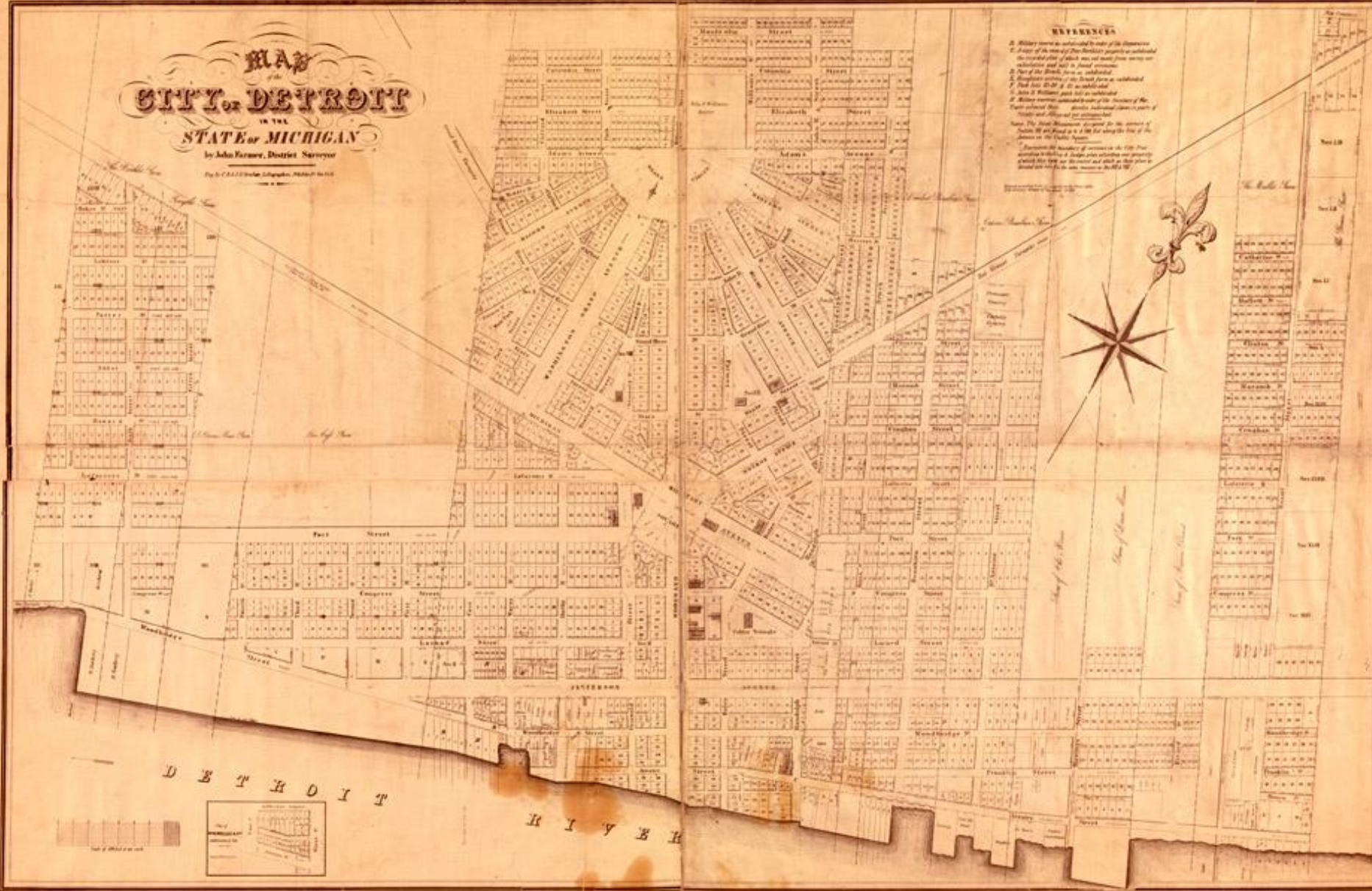
by John Farmer, District Surveyor

Dep. to C. A. D. Under Supervision, 1835

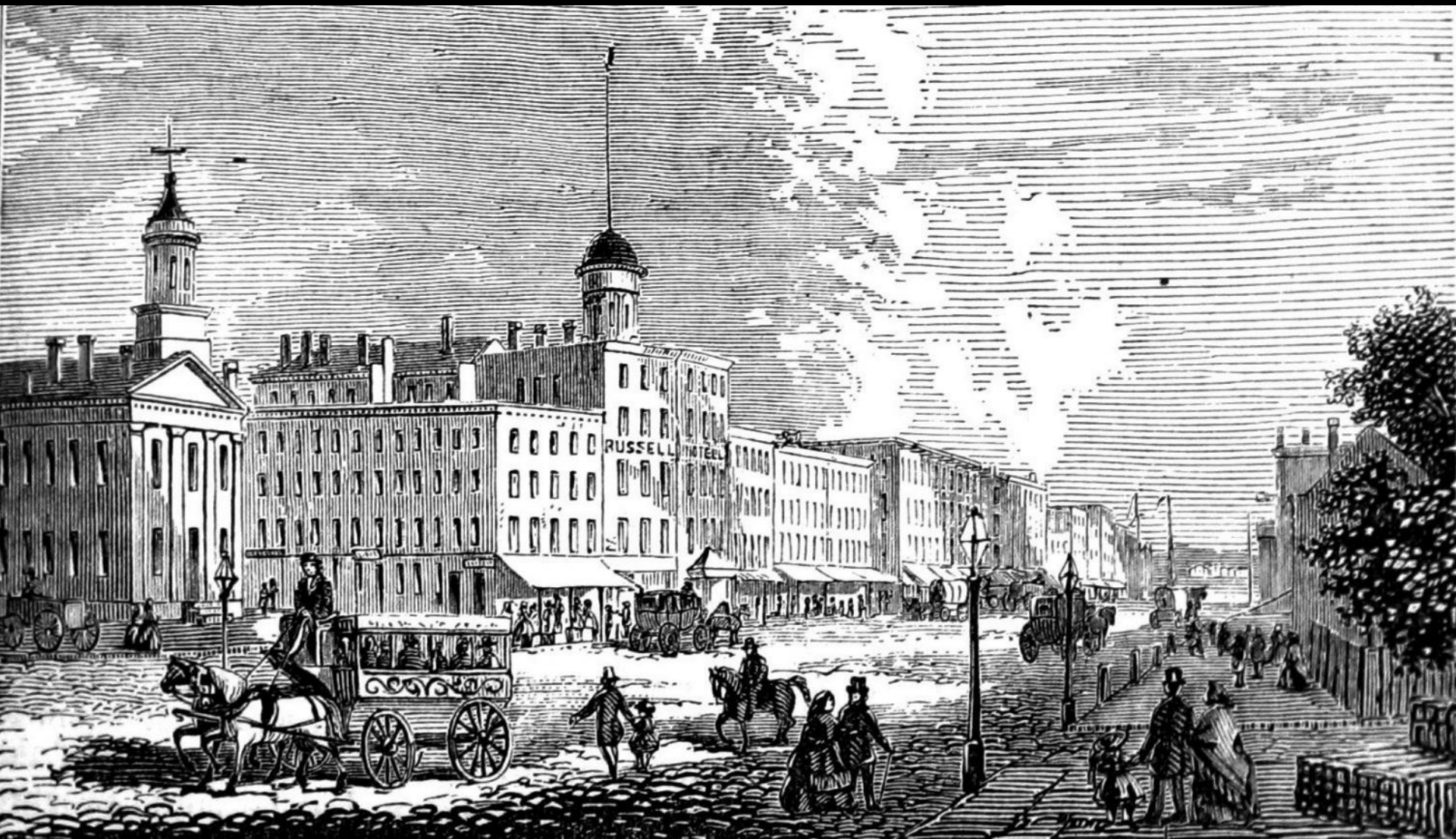
REFERENCES
 1. Military survey as established by order of the Government
 2. A copy of the plan of the District property as established
 the recorded plan of which may not have been made an
 exhibition and not in final connection
 3. Part of the District plan as established
 4. The plan of the city of Detroit as established
 5. The plan of the city of Detroit as established
 6. Military survey as established by order of the Government
 7. The plan of the city of Detroit as established
 8. The plan of the city of Detroit as established
 9. The plan of the city of Detroit as established
 10. The plan of the city of Detroit as established



D E T R O I T
R I V E R



To Detroit to 1835 (Χάρτης του John Farmer)



Ο κεντρικός εμπορικός δρόμος Woodward Avenue το 1865



Άποψη του Detroit από τα ανατολικά, από την καναδική ακτή το 1872 (A. C. Warren)



Used through the kindness of the Imperial Life Ins. Co.

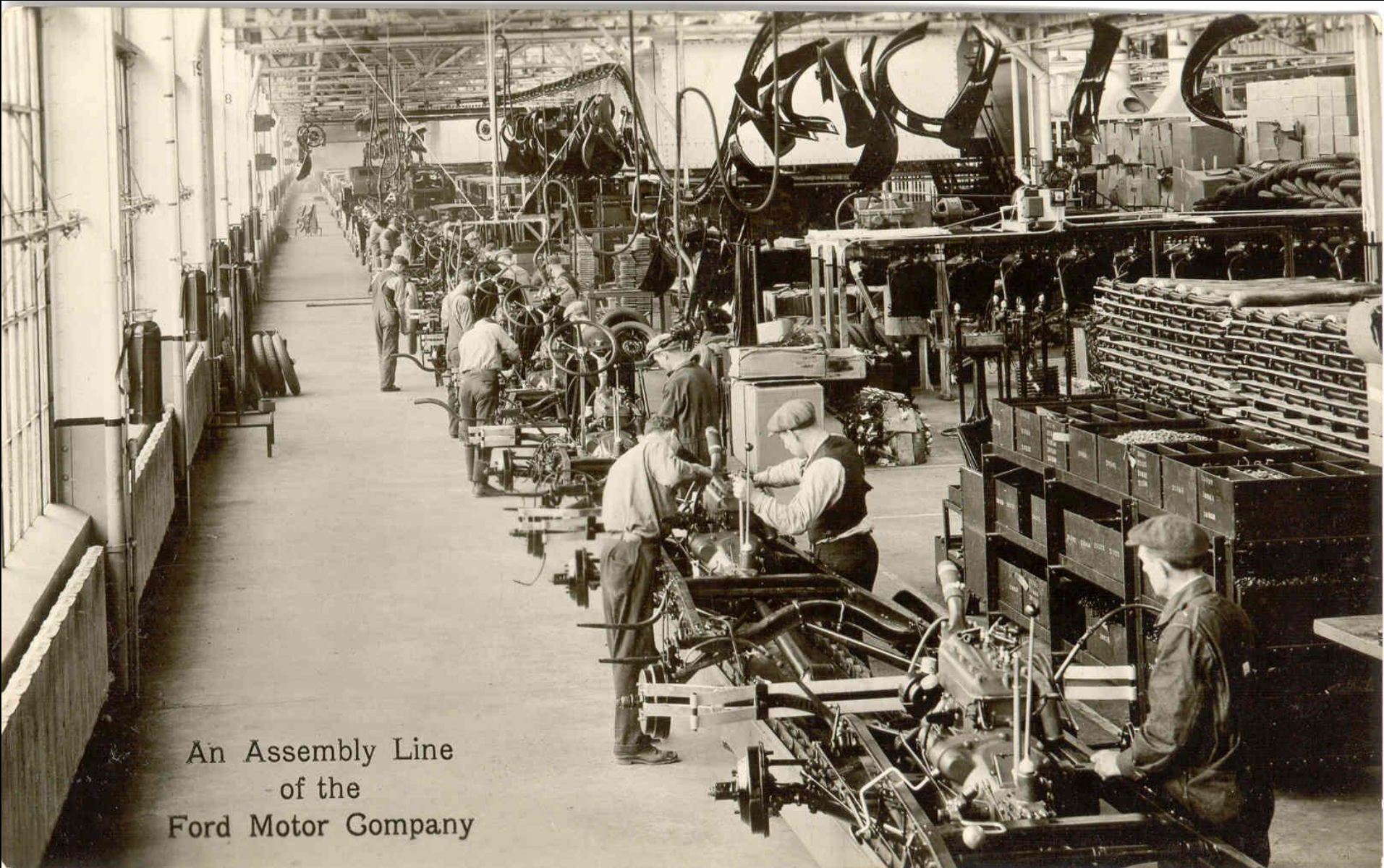
THE CALVERT LITH CO. DETROIT

BIRD'S EYE VIEW—SHOWING ABOUT THREE MILES SQUARE—OF THE CENTRAL PORTION OF THE CITY OF DETROIT, MICHIGAN.

Bird's eye view του κεντρικού Detroit το 1889 (Calvert Lithographing Co)



Portrait of Henry Ford (ca. 1919)
(photographer: Hartsook
Library of Congress)

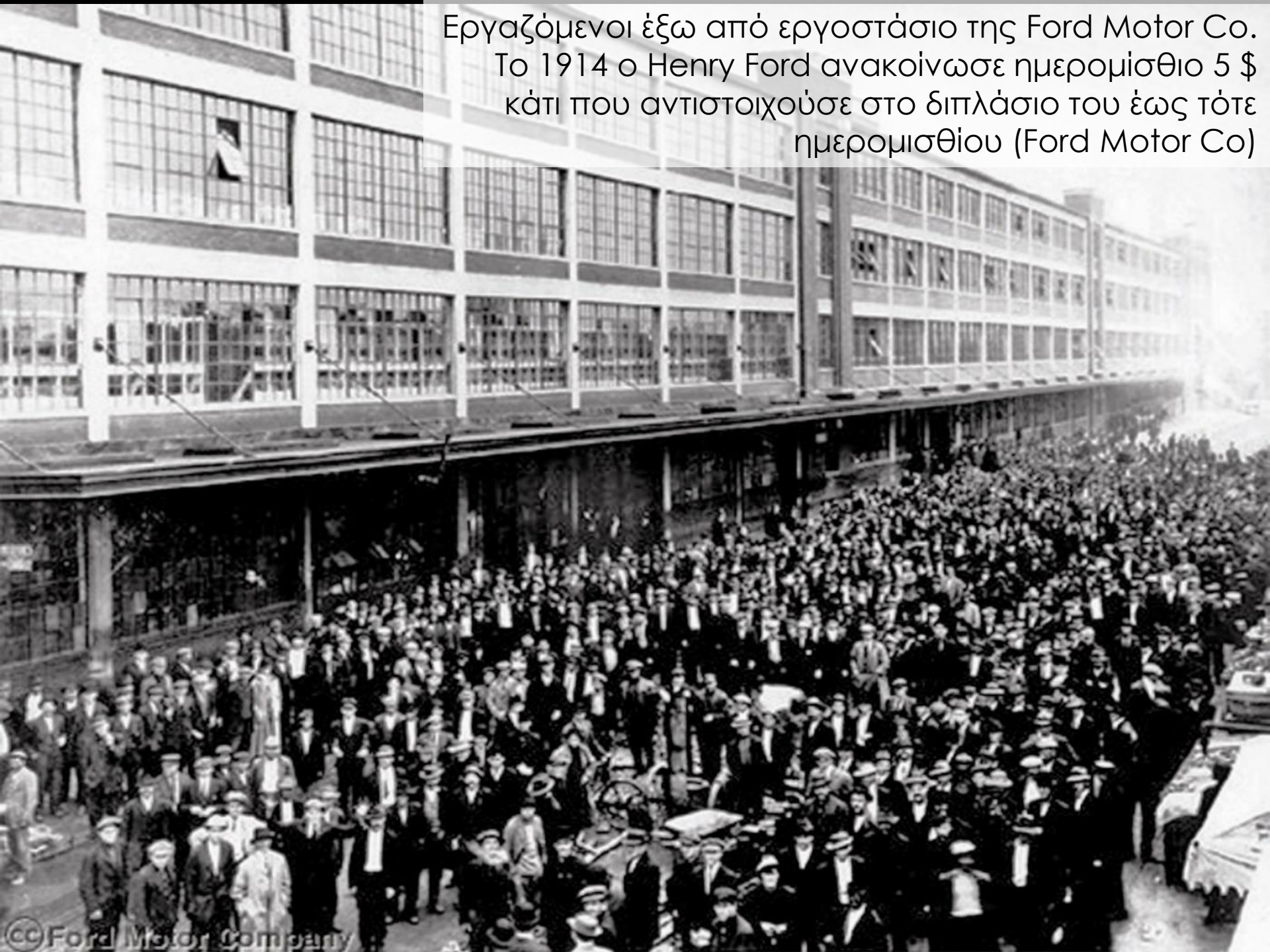


An Assembly Line
- of the
Ford Motor Company



THE PACKARD PLANT 1903 - 1958

Εργαζόμενοι έξω από εργοστάσιο της Ford Motor Co.
Το 1914 ο Henry Ford ανακοίνωσε ημερομίσθιο 5 \$
κάτι που αντιστοιχούσε στο διπλάσιο του έως τότε
ημερομισθίου (Ford Motor Co)



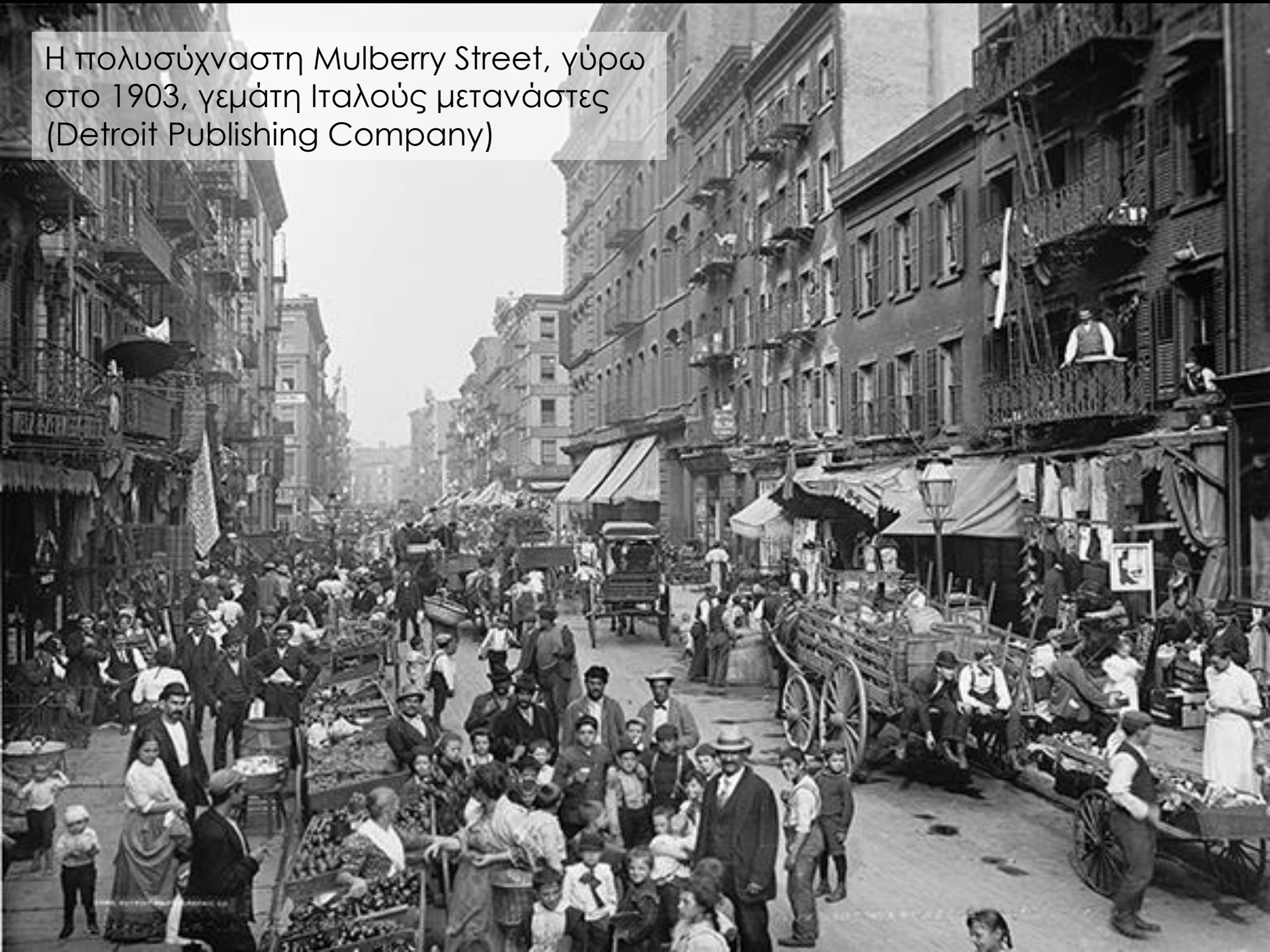
Detroit:
Διασταύρωση
Michigan &
Griswold γύρω
στο 1920





Αφροαμερικανοί που αναχωρούν σιδηροδρομικώς από το νότο με προορισμό τις βορειανατολικές βιομηχανικές περιοχές, κατά τη διάρκεια του μεγάλου μεταναστευτικού κύματος

Η πολυσύχναστη Mulberry Street, γύρω
στο 1903, γεμάτη Ιταλούς μετανάστες
(Detroit Publishing Company)



Το εργοστάσιο της Hudson Motor Company στο in Detroit το 1936:
Γειτονιές κατοικίας με μονοκατοικίες
περιβάλλουν το εργοστάσιο.



Ford Motor Company: Γραμμή παραγωγής στρατιωτικών Jeeps κατά το 2^ο Παγκόσμιο Πόλεμο





Εργαζόμενοι στη γραμμή παραγωγής tanks στο εργοστάσιο της Chrysler κατά το 2^ο Παγκόσμιο Πόλεμο



Ολοκλήρωση βομβαρδιστικών Liberator B24 (εσωτερικός εξοπλισμός, υδραυλικά, καλωδιώσεις σε δίδυμη γραμμή παραγωγής στο εργοστάσιο της Ford Motor Company, Willow Run plant. 24 Φεβρουαρίου 1943 (The Detroit News archives)

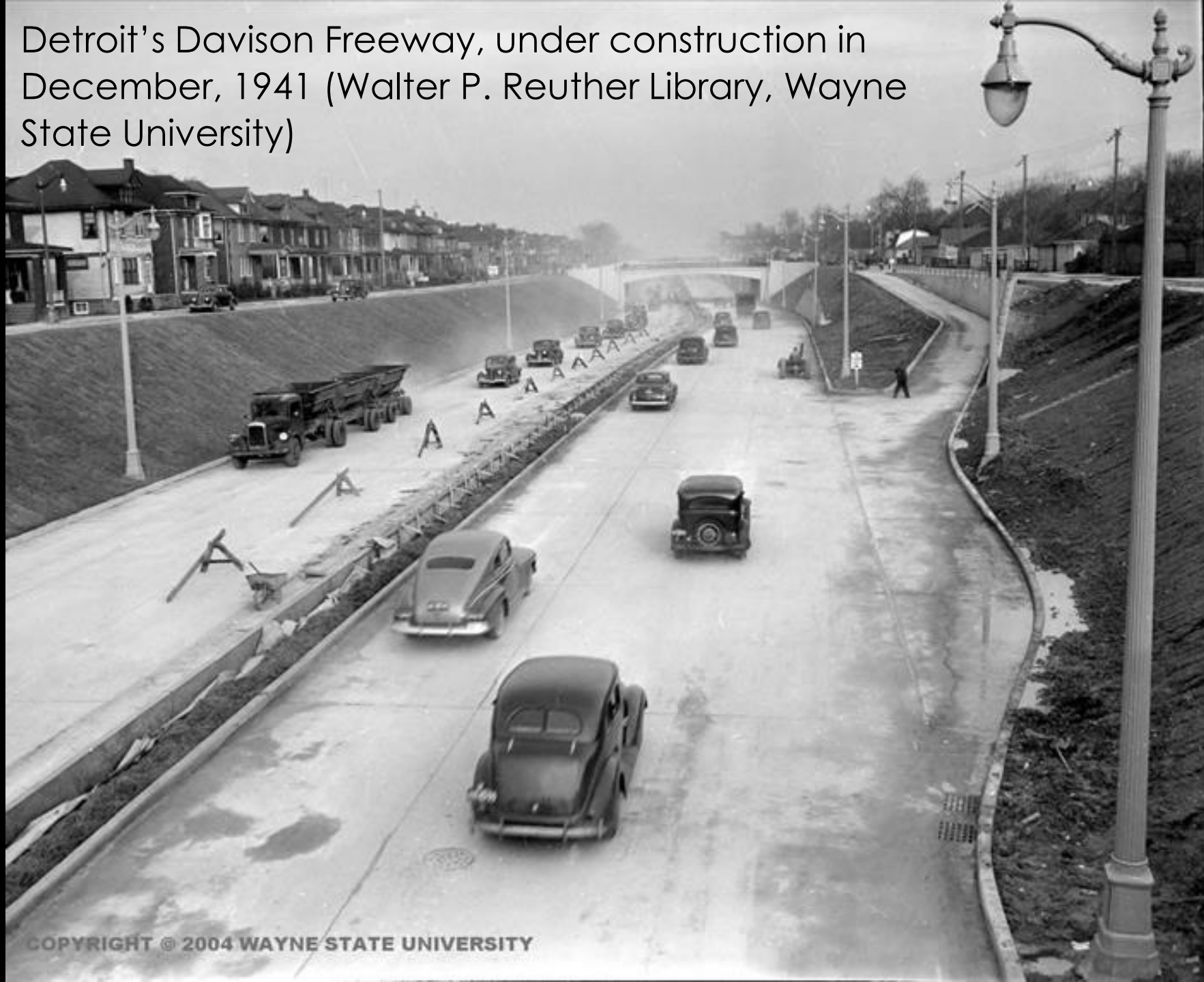


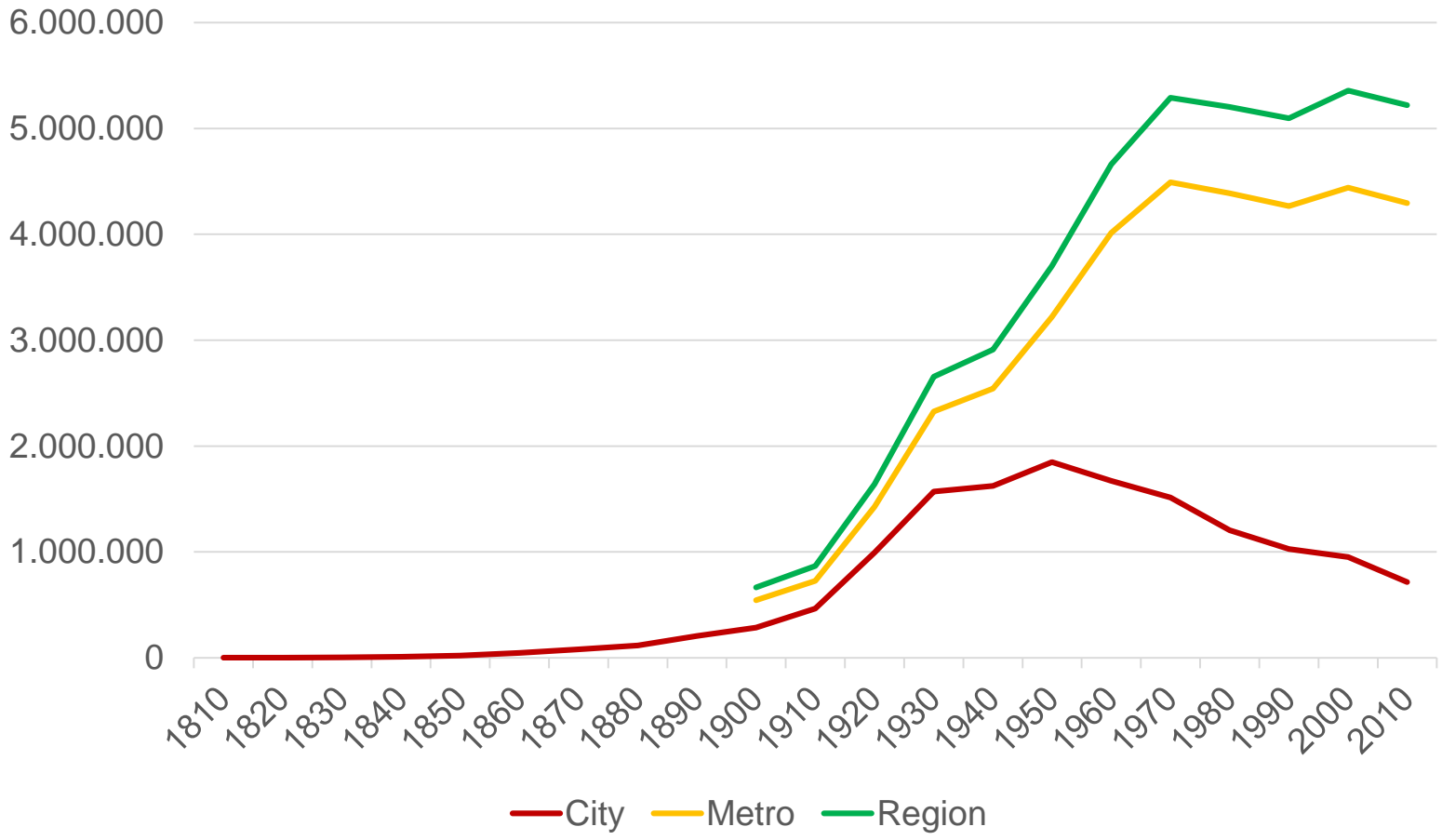
Thriving business:
A gathering of workers in the yard of the Ford factories between the two wars



Άποψη του Detroit το 1942

Detroit's Davison Freeway, under construction in December, 1941 (Walter P. Reuther Library, Wayne State University)





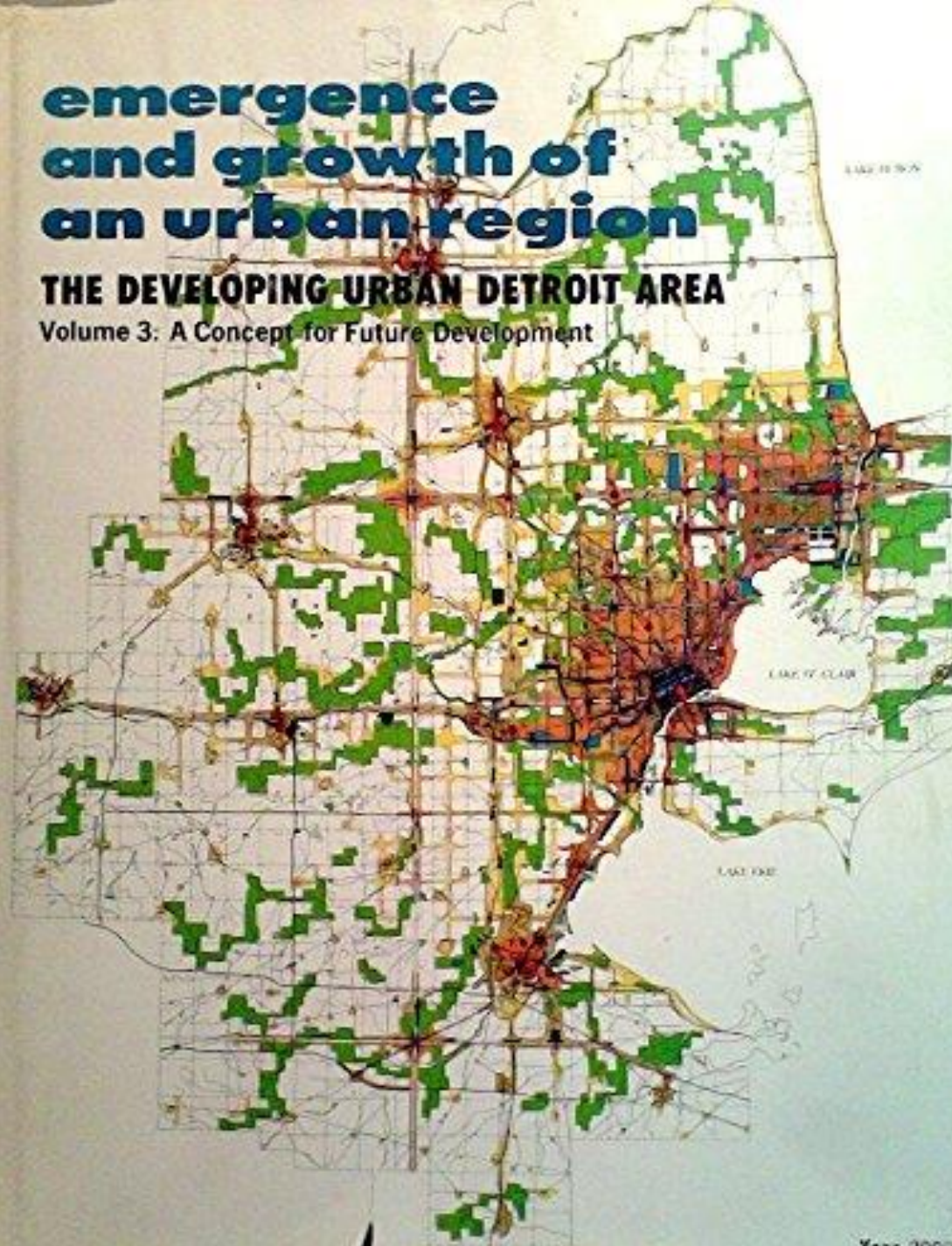
03

the developing Urban Detroit Area

emergence and growth of an urban region

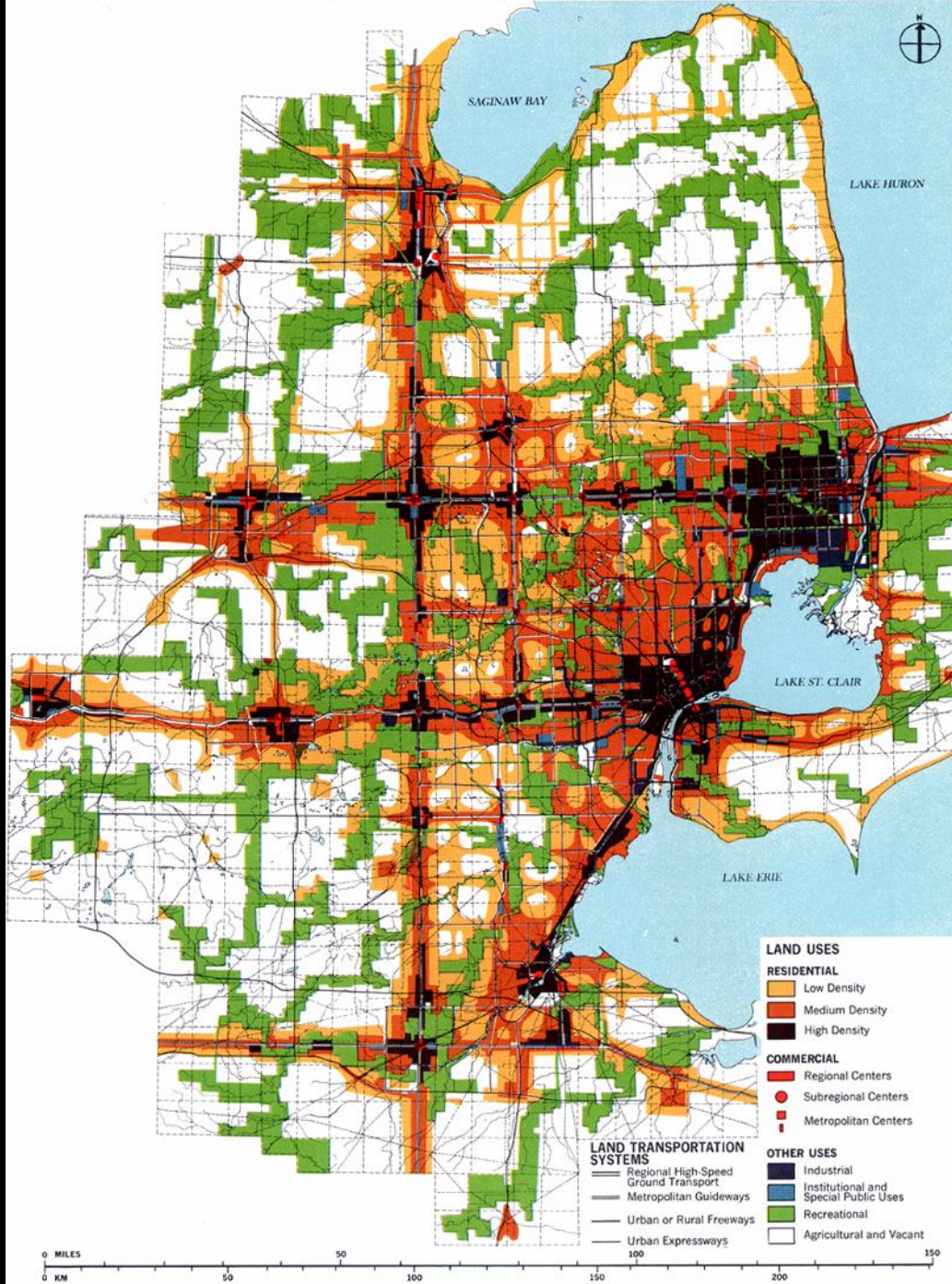
THE DEVELOPING URBAN DETROIT AREA

Volume 3: A Concept for Future Development





The Continuous And Long-Term Concept-Plan • UDA • Year 2100



04

από την ακμή στον μαρασμό



Το εργοστάσιο Packard Automotive: έκλεισε το 1958



FIGURE 7.6 Residential vacant lots and areas of the Taylor homes development.
 Sources: Data from Data Driven Detroit (2009); Detroit Planning and Development Department (2009); Michigan Department of Information Technology (2010); and Southeast Michigan Council of Governments (2010).







Detroit: the decay of a city and the fall of a model





1916



1950



1960



1969



1994



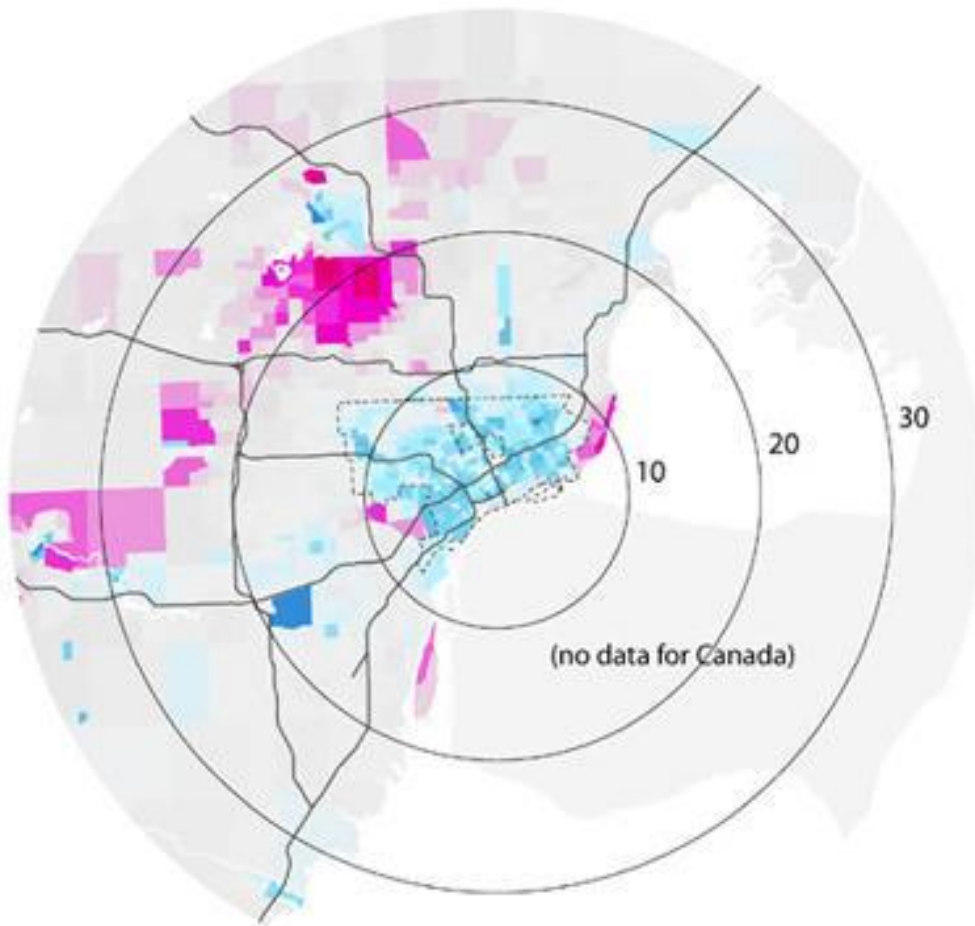
2004



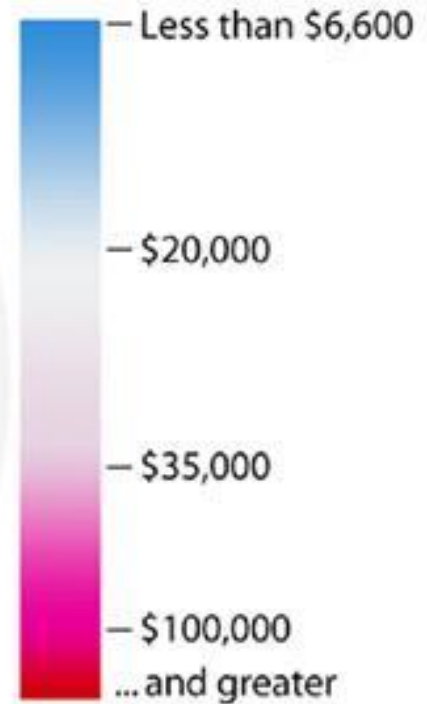
Detroit

4,500,000

(not including Windsor, Canada)



**Income per Capita
by Census tract, 2000**



Socioeconomic Trends in Detroit, 1950–2010

	1950	1960	1970	1980	1990	2000	2010
Population	1,849,568	1,670,144	1,541,063	1,203,368	1,037,974	951,270	713,777
Percent African-American	16.2%	29.8%	42.9%	63.1%	74.9%	82.2%	82.7%
Households	501,145	514,837	497,753	424,033	374,057	345,424	271,050
Employed Detroit Residents	758,784	612,295	361,184	394,707	335,462	331,441	203,893
Percent Manufacturing	46.0%	37.3%	55.8%	28.7%	20.5%	18.8%	11.4%
Employed Residents/ Household	1.51	1.19	0.73	0.93	0.90	0.96	0.75
Unemployment Rate	7.4%	9.9%	7.2%	18.5%	19.7%	13.8%	29.0%
Jobs in Detroit	N/A	N/A	735,164	562,120	442,490	345,424	347,545
Median Household Income*	\$31,033	\$52,948	\$55,763	\$36,506	\$25,922	\$37,005	\$28,357

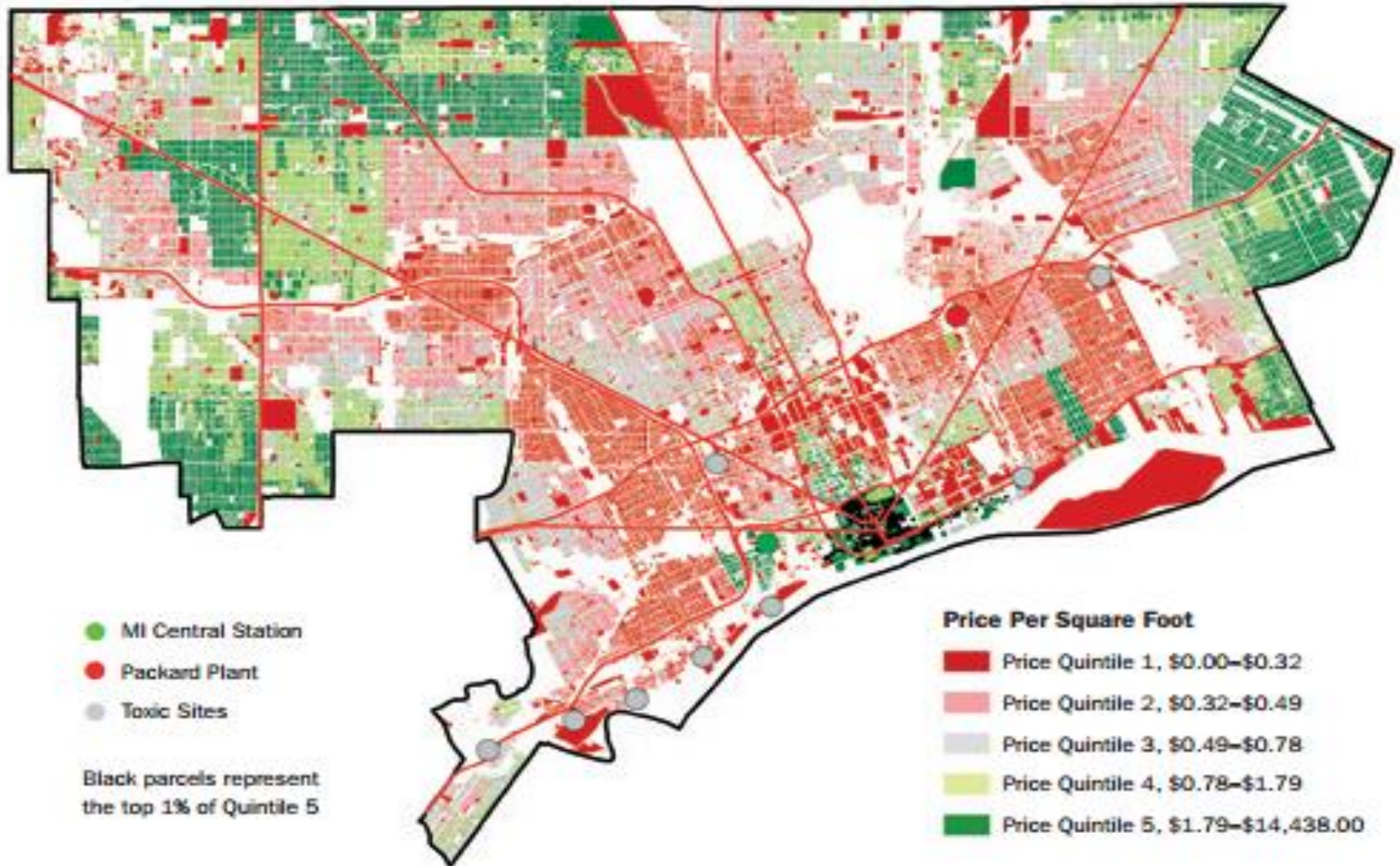
* Adjusted for inflation, 2010 dollars. Sources: US Bureau of the Census, American Community Survey.



© EPA

A building on Grand River Avenue advertises home for sale for \$1.500 (MailOnline)

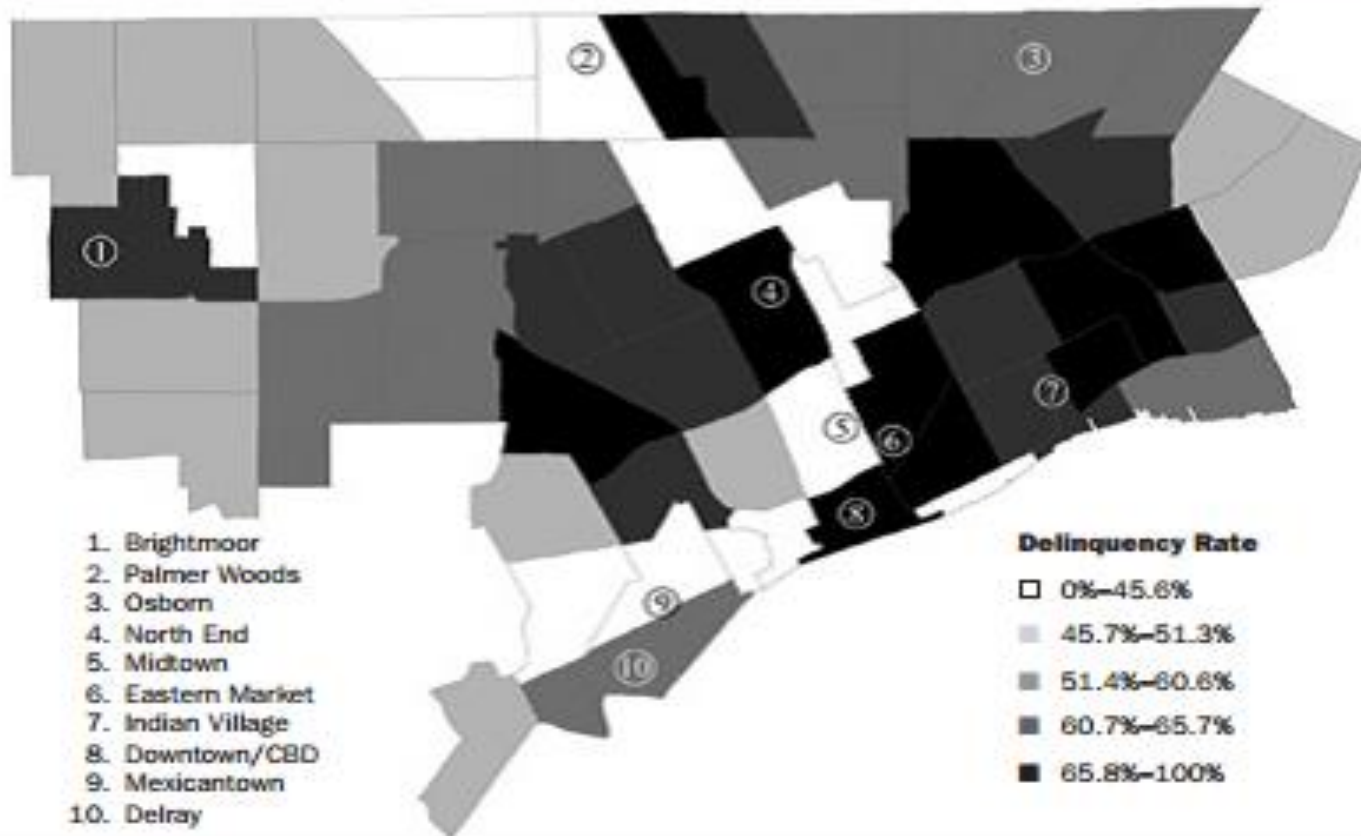
Detroit Land Values by Quintile



Source: City of Detroit Assessor data, 2010.

Note: Hodge et al. (2014b), use data on 3,788 vacant land parcels that were sold over the 2006–2010 period to estimate the pattern of land values. These recently sold properties are about 4.6 percent of the 81,326 vacant residential and commercial parcels in the city. The coefficients generated from this regression analysis were then used to generate predicted land values for nearly all of the 380,000 parcels in the city.

Detroit Delinquency Rate by Neighborhood, 2010



Source: City of Detroit Assessor Data, 2010.





**NO
Emergency
Manager
MAKE THE
BANKS PAY**

Moratorium-Mi.org
313-744-7912

**Support
Good Jobs in Detroit**

**Support
Detroit Families**

**Support
Detroit Pensions**



UNITEHERE! Local 24

*Jobs,
Pensions,
City Services...*
THE BANKS

OWE US!

Moratorium-Mi.org
313-744-7912

**BAIL
OUT
PEOPLE
NOT
BANKS!**

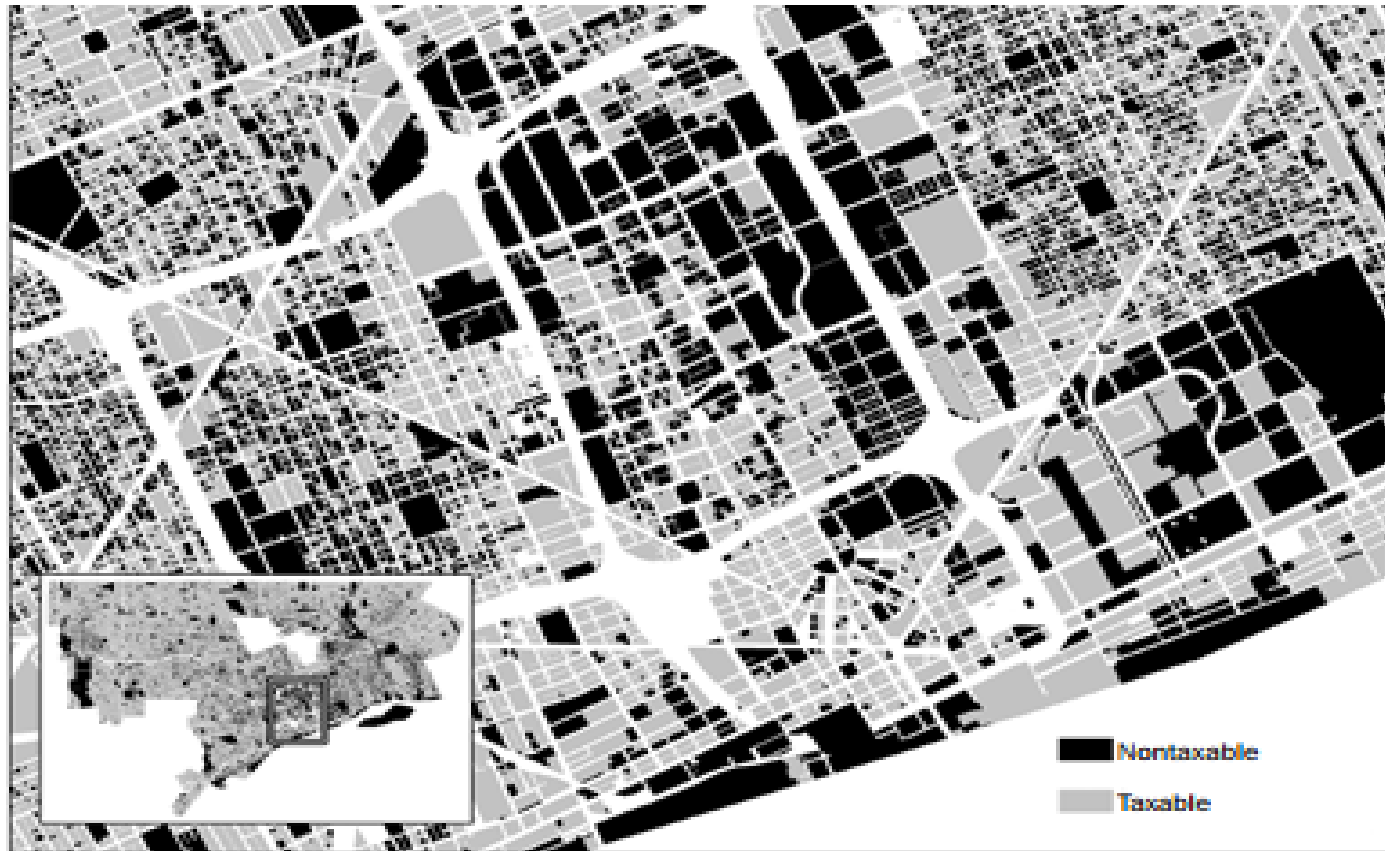
MICHIGAN EMERGENCY CENTER
AGAINST FIRE & JUSTICE
WWW.MIEMC.ORG

**BAIL
OUT
PEOPLE
NOT
BANKS!**

**DEBT SERVICE
to BANKS that
DESTROYED
DETROIT**

Moratorium-Mi.org

Taxable (Privately Held) and Nontaxable (Publicly Held) Properties in Central Detroit, 2010



Source: City of Detroit Assessor Data, 2010.

05

Η προσπάθεια της αναγέννησης:

Detroit Future City

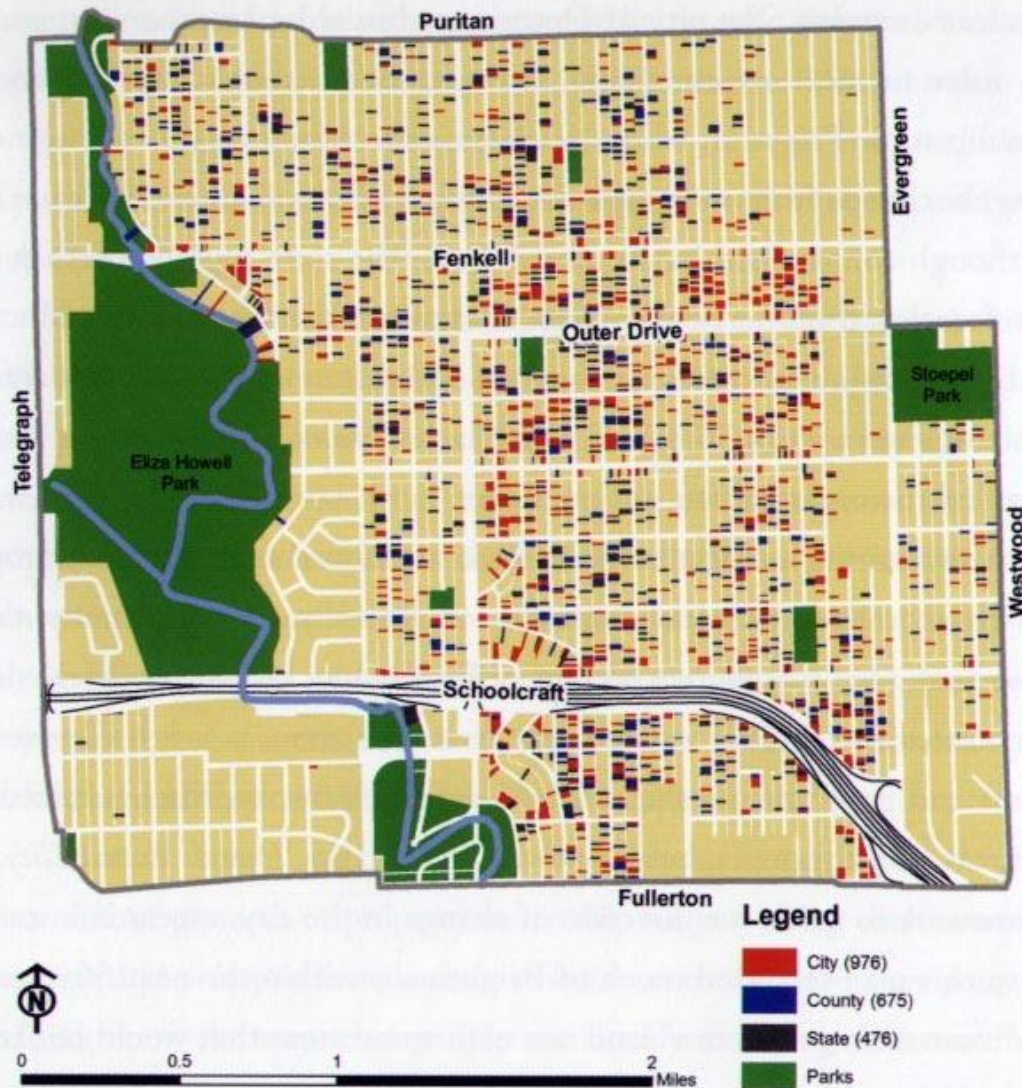


FIGURE 7.20 Property owned by the city, the county, and the state.

Sources: Data from Detroit Assessor (2009); Detroit Planning and Development Department (2009); Michigan Department of Information Technology (2010); Southeast Michigan Council of Governments (2010); Michigan Land Bank Fast Track Authority (2010a, 2010b); and Wayne County Treasurer (2010).



Woodward

Grand River

ONE WAY

WORK
ZONE
BEGINS

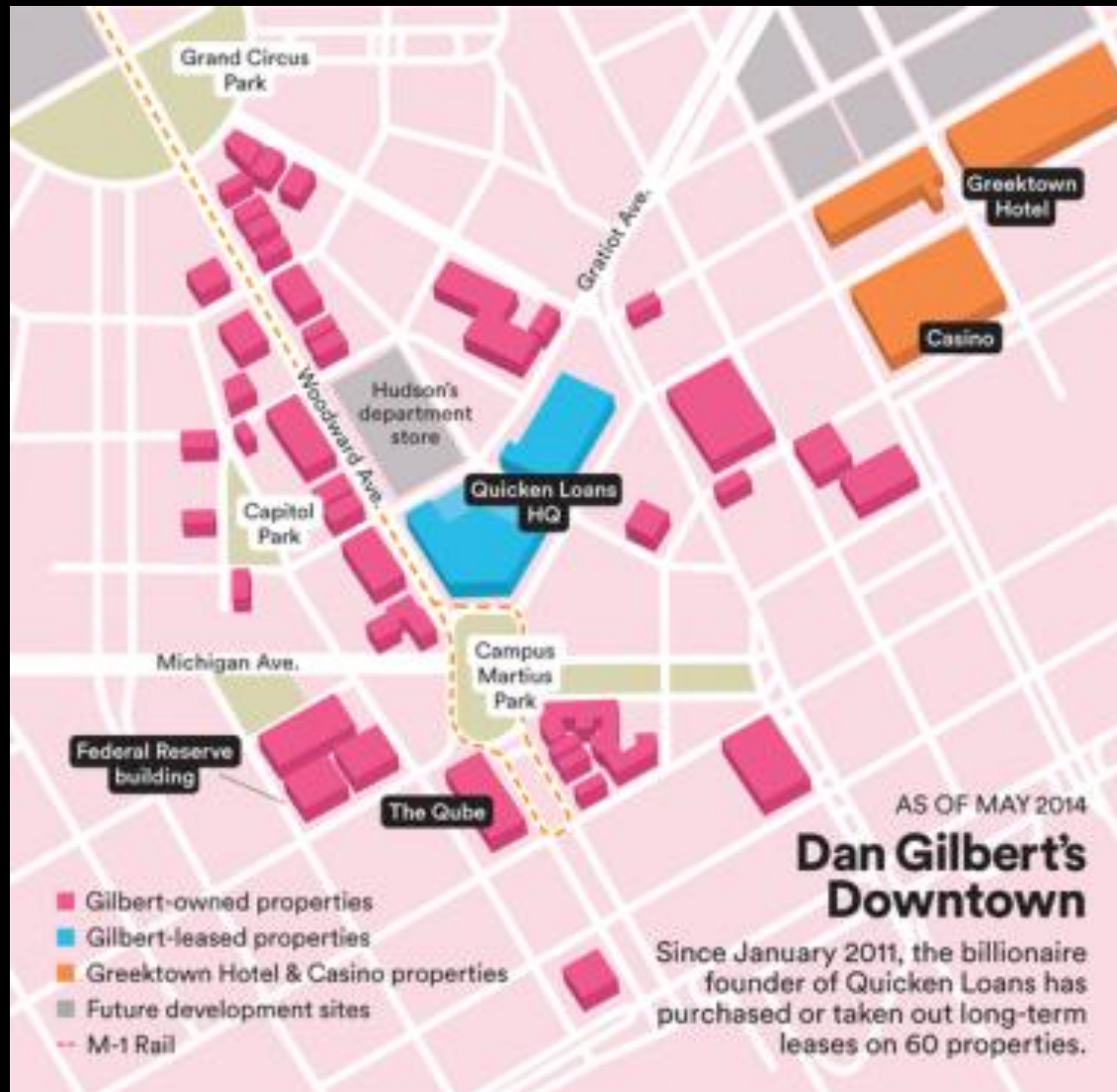


AAA
CRUISE
PACKAGES

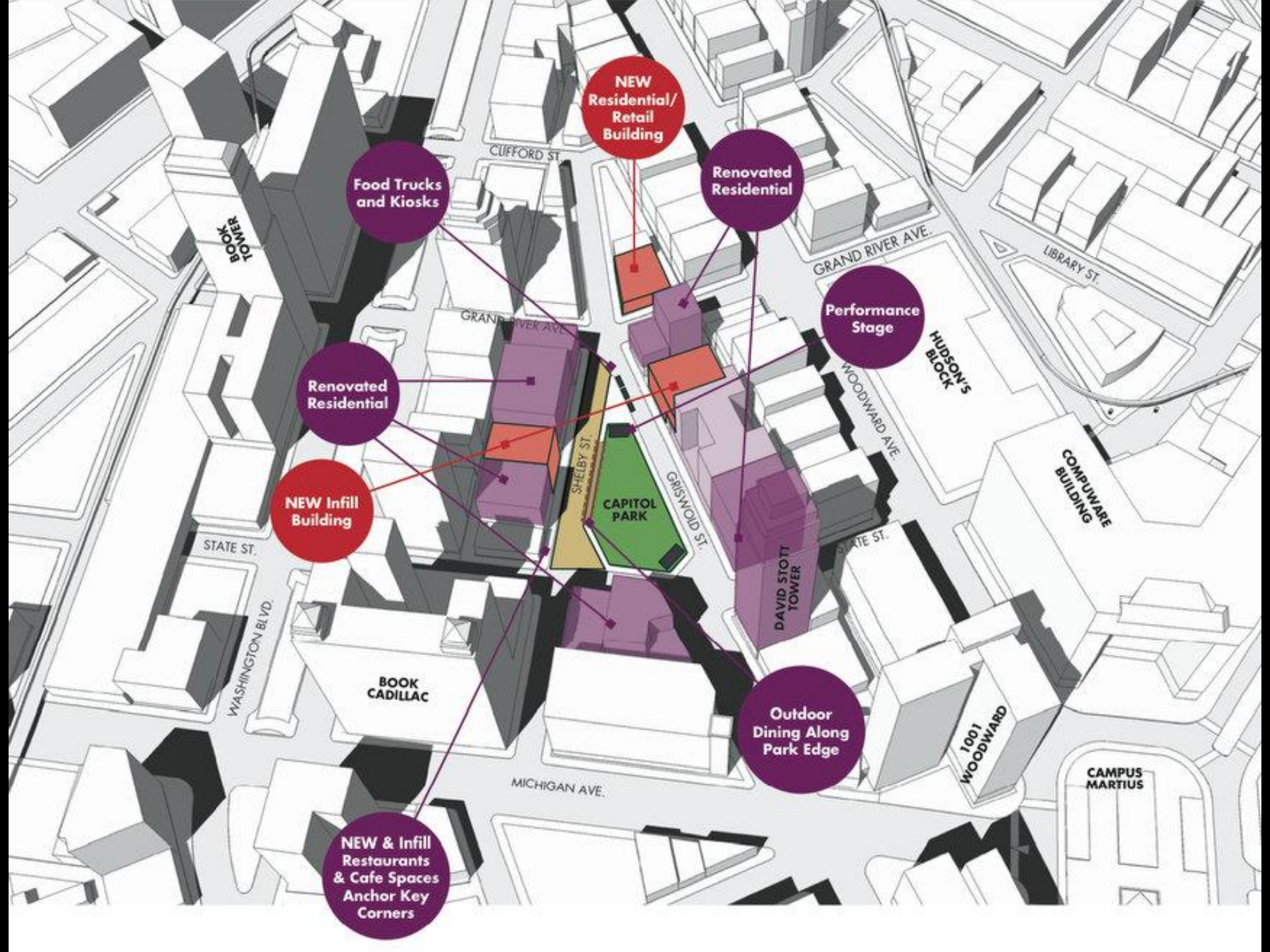
Access the online, no-wait
Secretary of State here.
EXPRESS











**NEW Residential/
Retail
Building**

**Food Trucks
and Kiosks**

**Renovated
Residential**

**Performance
Stage**

**Renovated
Residential**

**NEW Infill
Building**

**CAPITOL
PARK**

**Outdoor
Dining Along
Park Edge**

**NEW & Infill
Restaurants
& Cafe Spaces
Anchor Key
Corners**

TOMER
BOOK

CLIFFORD ST

GRAND RIVER AVE

LIBRARY ST

GRAND RIVER AVE

HUDSON'S
BLOCK

WOODWARD AVE

COMPUWARE
BUILDING

STATE ST

STATE ST

WASHINGTON BLVD

BOOK
CADILLAC

DAVID STOTT
TOWER

1001
WOODWARD

CAMPUS
MARTIUS

MICHIGAN AVE

SHELBY ST

GRISWOLD ST

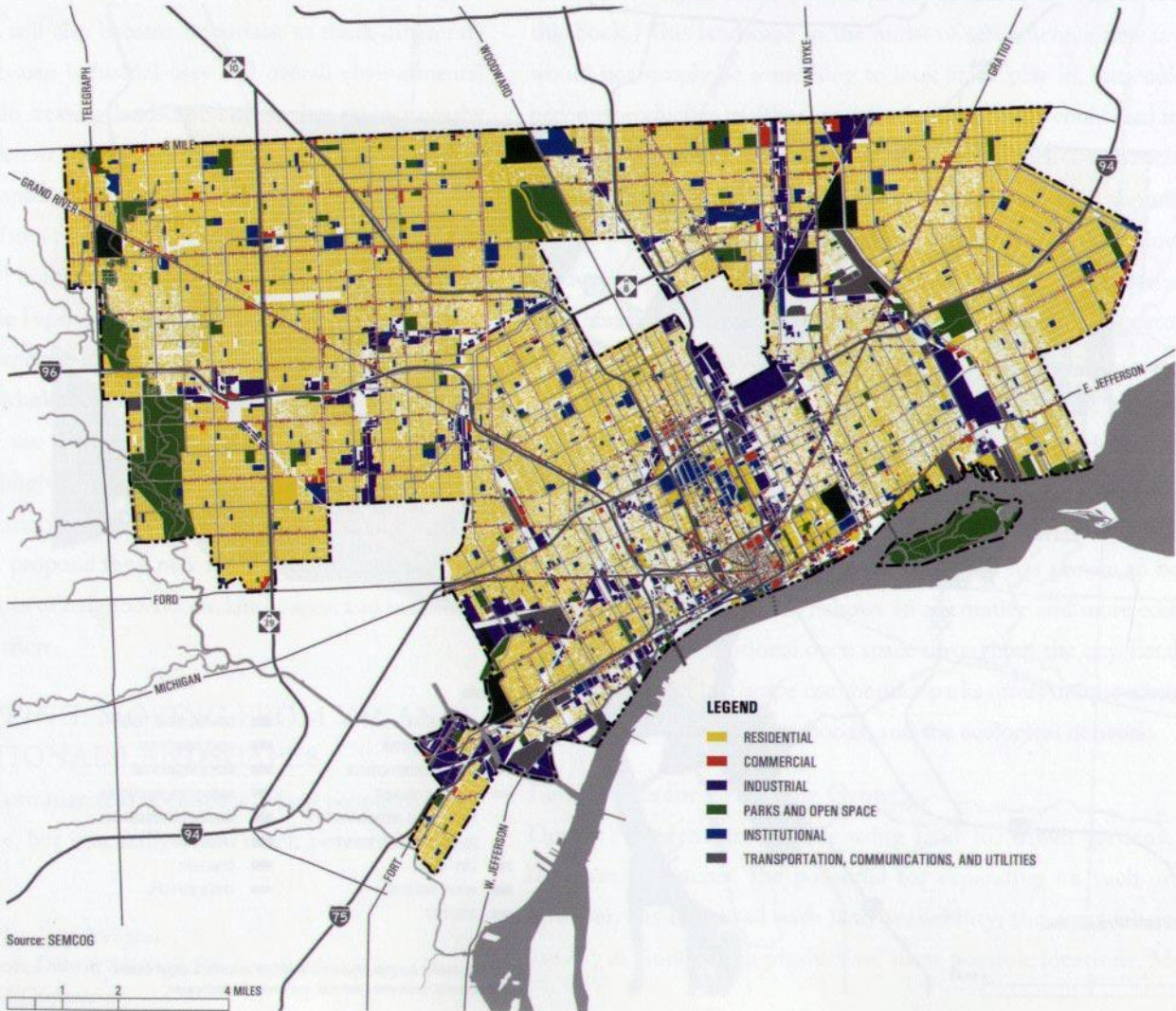


BAGLEY
OPTICAL

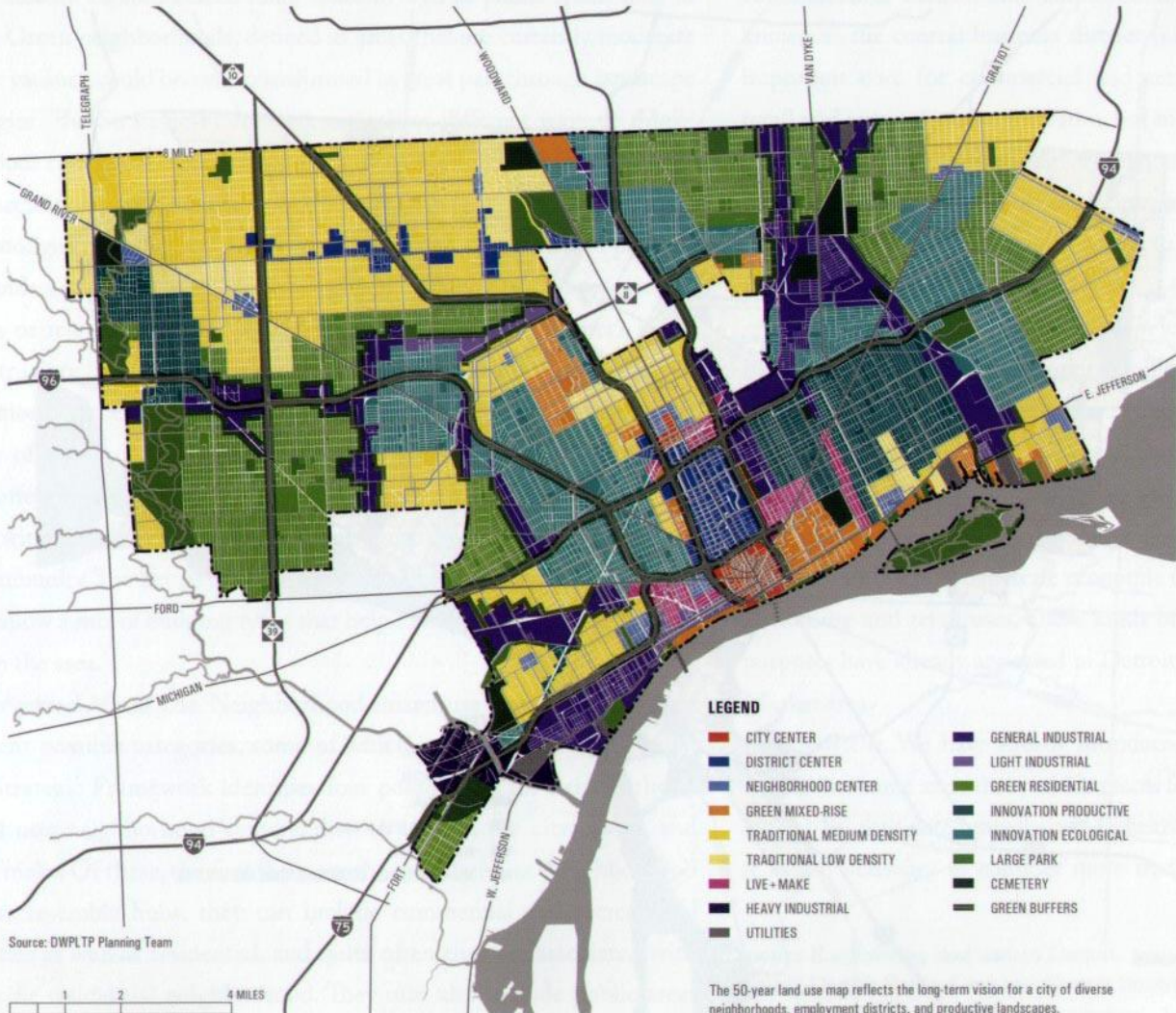




EXISTING: CURRENT LAND USE



PROPOSED: 50-YEAR LAND USE SCENARIO




Source: DWPLTP Planning Team

- LEGEND**
- CITY CENTER
 - GENERAL INDUSTRIAL
 - DISTRICT CENTER
 - LIGHT INDUSTRIAL
 - NEIGHBORHOOD CENTER
 - GREEN RESIDENTIAL
 - GREEN MIXED-RISE
 - INNOVATION PRODUCTIVE
 - TRADITIONAL MEDIUM DENSITY
 - INNOVATION ECOLOGICAL
 - TRADITIONAL LOW DENSITY
 - LARGE PARK
 - LIVE + MAKE
 - CEMETERY
 - HEAVY INDUSTRIAL
 - GREEN BUFFERS
 - UTILITIES

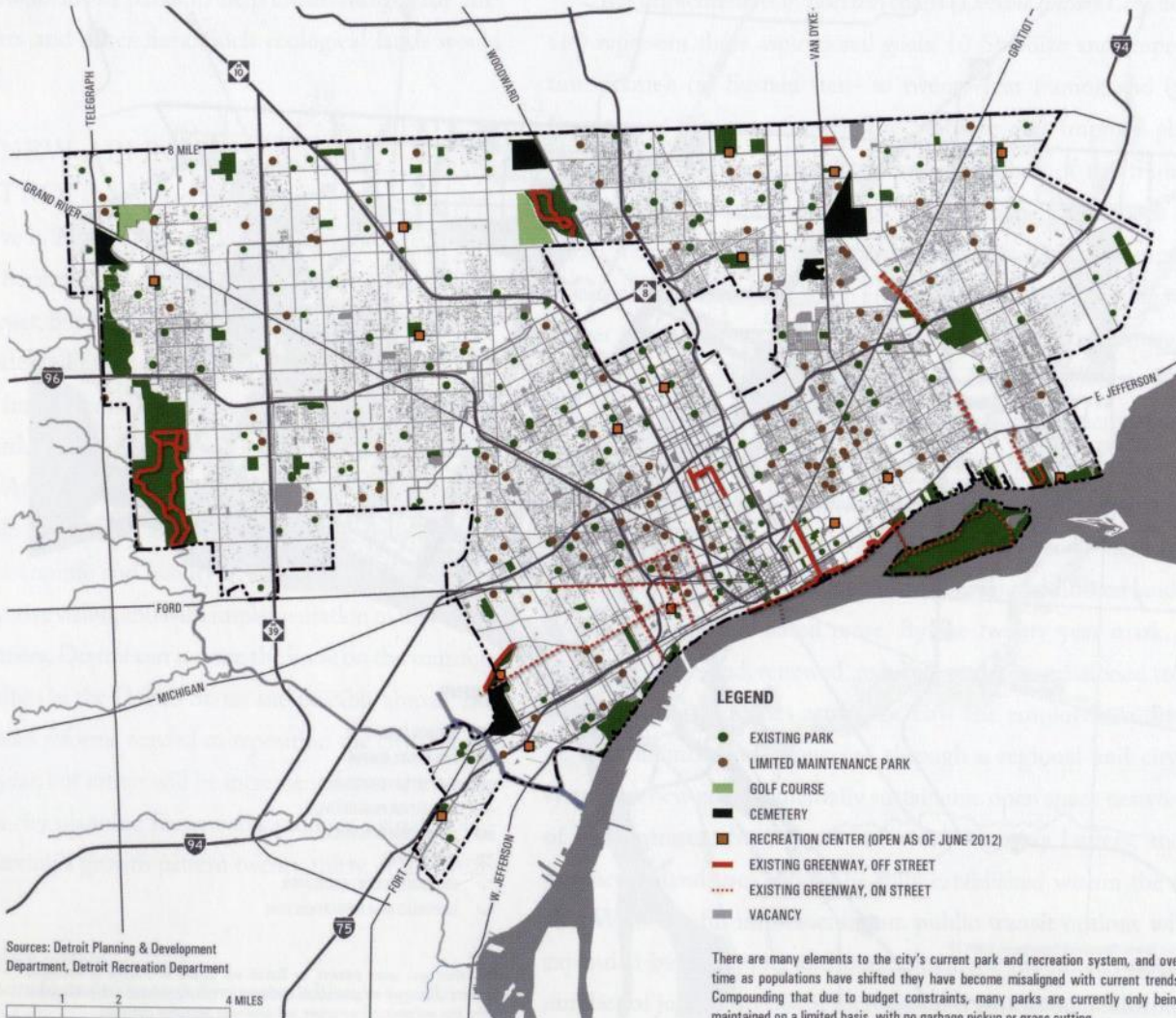
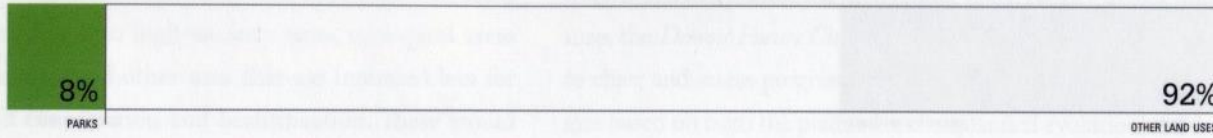
The 50-year land use map reflects the long-term vision for a city of diverse neighborhoods, employment districts, and productive landscapes.

LEGEND

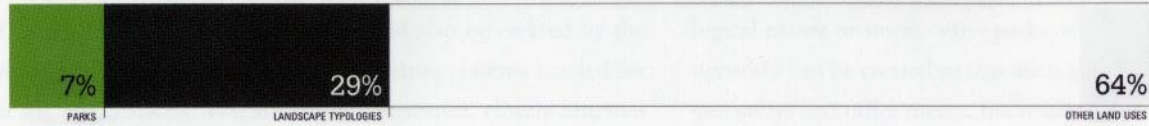
	CITY CENTER		GENERAL INDUSTRIAL
	DISTRICT CENTER		LIGHT INDUSTRIAL
	NEIGHBORHOOD CENTER		GREEN RESIDENTIAL
	GREEN MIXED-RISE		INNOVATION PRODUCTIVE
	TRADITIONAL MEDIUM DENSITY		INNOVATION ECOLOGICAL
	TRADITIONAL LOW DENSITY		LARGE PARK
	LIVE+MAKE		CEMETERY
	HEAVY INDUSTRIAL		GREEN BUFFERS
	UTILITIES		

The 50-year land use map reflects the long-term vision for a city of diverse neighborhoods, employment districts, and productive landscapes.

CURRENT: EXISTING PARKS SYSTEM



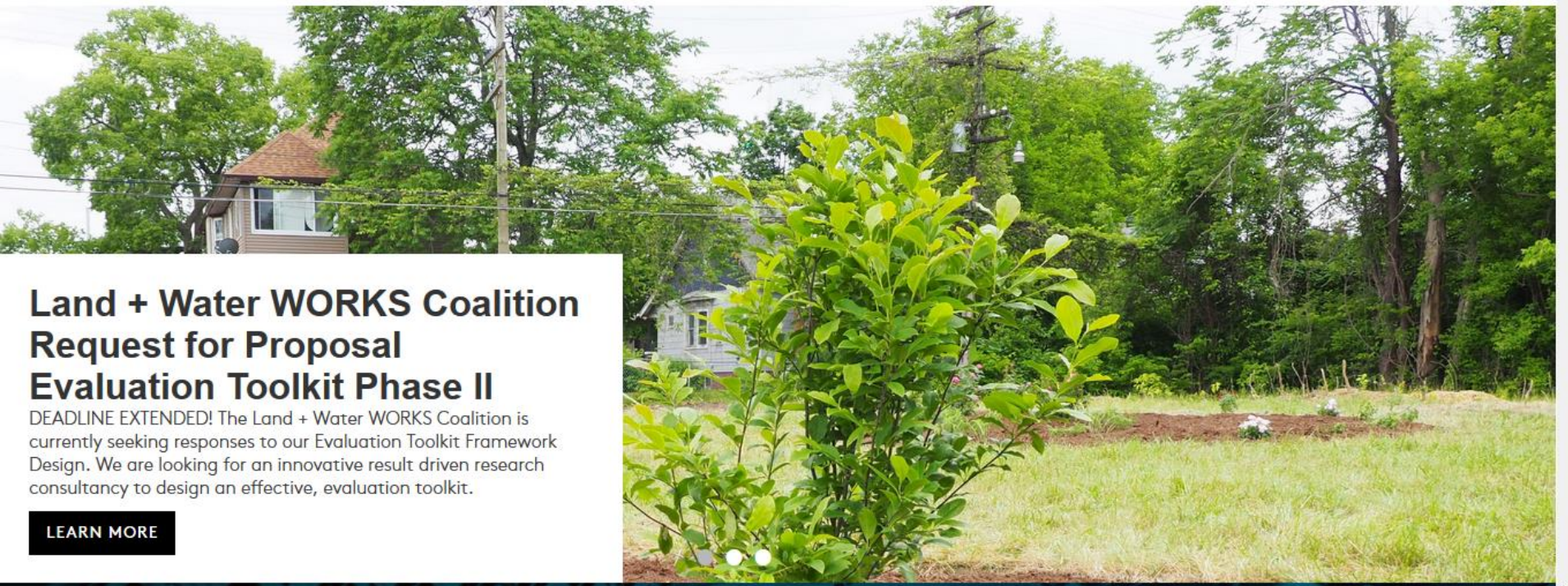
PROPOSED: FUTURE OPEN SPACE SYSTEM



LEGEND

-  CARBON FOREST
-  INDUSTRIAL BUFFER
-  BLUE INFRASTRUCTURE
-  INNOVATION PRODUCTIVE
-  INNOVATION ECOLOGICAL
-  LARGE PARKS
-  DISPERSED GREEN LANDSCAPES
-  DISPERSED BLUE INFRASTRUCTURE

The future open space network for Detroit will consist of a series of interlinked elements. These will not only include traditional parks but a series of newly repurposed parks, blue and green infrastructure, and large scale landscape typologies.



Land + Water WORKS Coalition Request for Proposal Evaluation Toolkit Phase II

DEADLINE EXTENDED! The Land + Water WORKS Coalition is currently seeking responses to our Evaluation Toolkit Framework Design. We are looking for an innovative result driven research consultancy to design an effective, evaluation toolkit.

[LEARN MORE](#)

What are the priorities of DFC?

DFC's actions over the next five years are segmented into three categories:

- Land Use and Sustainability
- Community and Economic Development
- Publications

What is DFC's relationship with the City of Detroit and the Mayor's Office ?

DFC has a strong, collaborative, working relationship with the City of Detroit and the Mayor's Office.

The City of Detroit is one of the many community partners involved with helping to implement the DFC Strategic Framework.

Representatives from the City of Detroit serve on the DFC board and as members of working groups.





SPARTAN
BARRICADE
517-694-1500

SPARTAN

QLINE
DETROIT

SERVICE

QLINE
DETROIT

TESTING
IN
PROGRESS

289

DTE ENERGY

MAKE A LIFE
NOT JUST
A LIVING



The Alley Project (TAP)

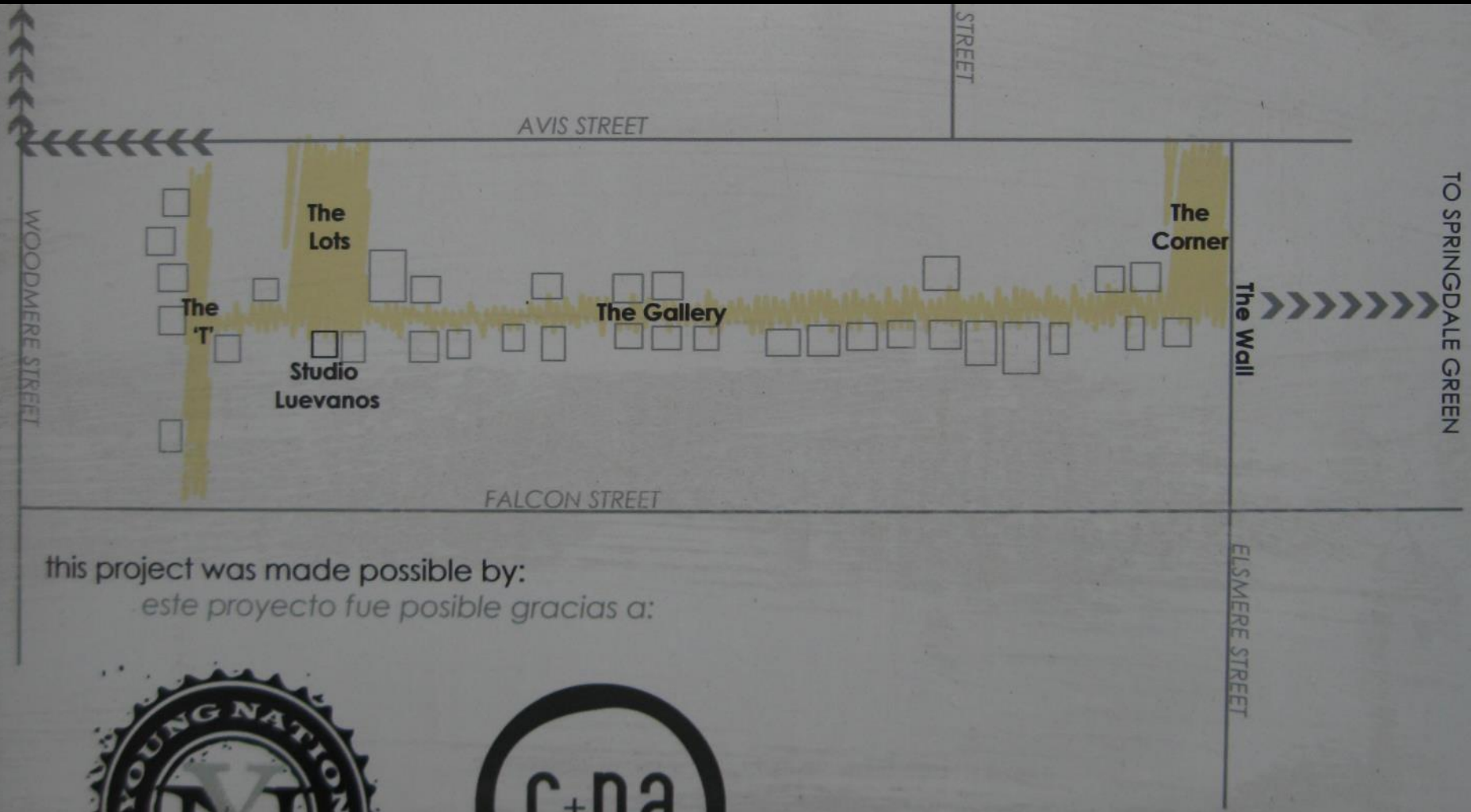
The Alley Project was created in collaboration with and for the residents of Southwest Detroit as part of the community+public arts:DETROIT initiative with support from The Skillman Foundation, The Kresge Foundation, Chase, and College for Creative Studies.

Additional support for this project from Young Nation, Northend Studios, Urban Neighborhoods Initiatives, University of Detroit Mercy School of Architecture, Detroit Collaborative Design Center, 555 Gallery, Bridging Communities, Falcon and Avis Street Residents, and the youth residents of Southwest Detroit.

Dedicated
July 4, 2011

Lead Artist:
Erik Howard

Assisting Artist:
Ruben Roldan



this project was made possible by:
este proyecto fue posible gracias a:



The Alley Project (TAP)



Welcome to the critically acclaimed

Heidelberg Project

Please do not photograph any of the residents
Please do not park in front of the residences

the works of the Heidelberg Project and its founder Tyree Guyton and other contributing artists are protected under the United States Copyright Act, Title 17, United States Code. All copyrights, moral rights (to the extent such rights protected under applicable law) and any and all rights to register and maintain copyrights in the creative works of the Heidelberg Project are strictly enforced. Please respect our artists' rights and the rights of our community. Photos and videos may be taken for personal and educational purpose only. Commercial Exploitation is strictly prohibited.

Thank You for your Visit



ELCA
2013
Grandon

ENTER THE
WALKINSHAW
CLAN



Colton

KEVIN
WAINWRIGHT
10/16/15

DETROIT
INDUSTRIAL GALLERY™



Tim Burke - artist
313-742-1800
www.detroitindustrialgallery.com





11 12 13
10 | 1
8 | 2
7 | 5
6 | 1

10 11 12 13
9 | 1
8 7 6 5 4

11 12 1
10 | 2
9 | 3
8 | 4
7 6

One Step
AT A TIME





12
12
3
5

10 12 12
9 6 5

WALETON





06

ορισμένες συμπερασματικές σκέψεις

1. «οι πόλεις γεννήθηκαν, μεγάλωσαν
και θα πεθάνουν» ...

2. καινοτομία

3. περιβάλλον

4. σχεδιασμός

5. συμμετοχή

6. συνεργασία

