



# **MEETING OF THE TRANSPORT WORKING GROUP**

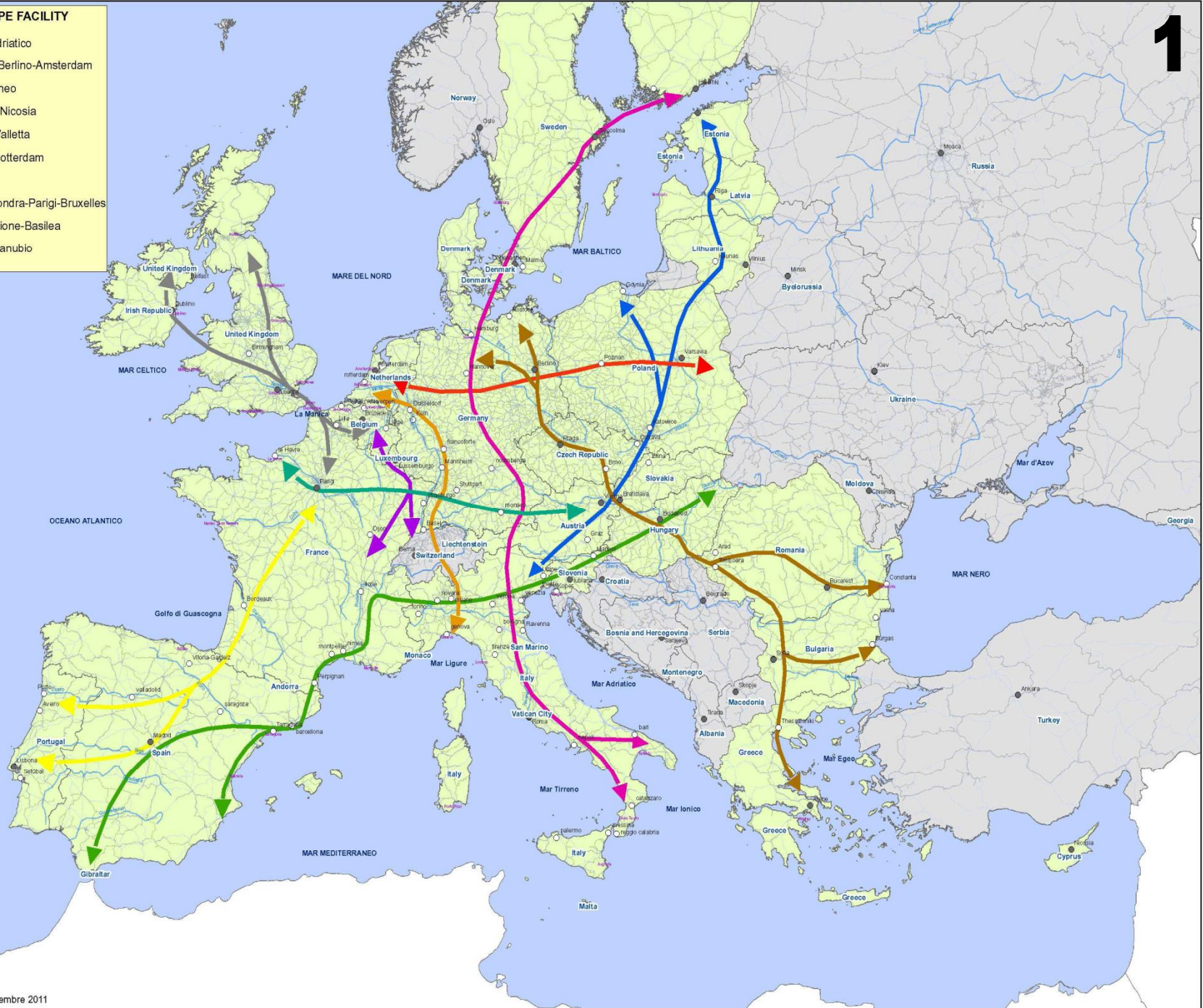
**REGION OF EAST MACEDONIA AND THRACE**

**VALENCIA 2011**

CONNECTING EUROPE FACILITY

- 1 - Corridoio Baltico-Adriatico
- 2 - Corridoio Varsavia-Berlino-Amsterdam
- 3 - Corridoio Mediterraneo
- 4 - Corridoio Amburgo-Nicosia
- 5 - Corridoio Helsinki-Valletta
- 6 - Corridoio Genova-Rotterdam
- 7 - Corridoio Atlantico
- 8 - Corridoio Dublino-Londra-Parigi-Bruxelles
- 9 - Corridoio Anversa-Lione-Basilea
- 10 - Corridoio Senna-Danubio

Scala 1:12.000.000 (formato A3)

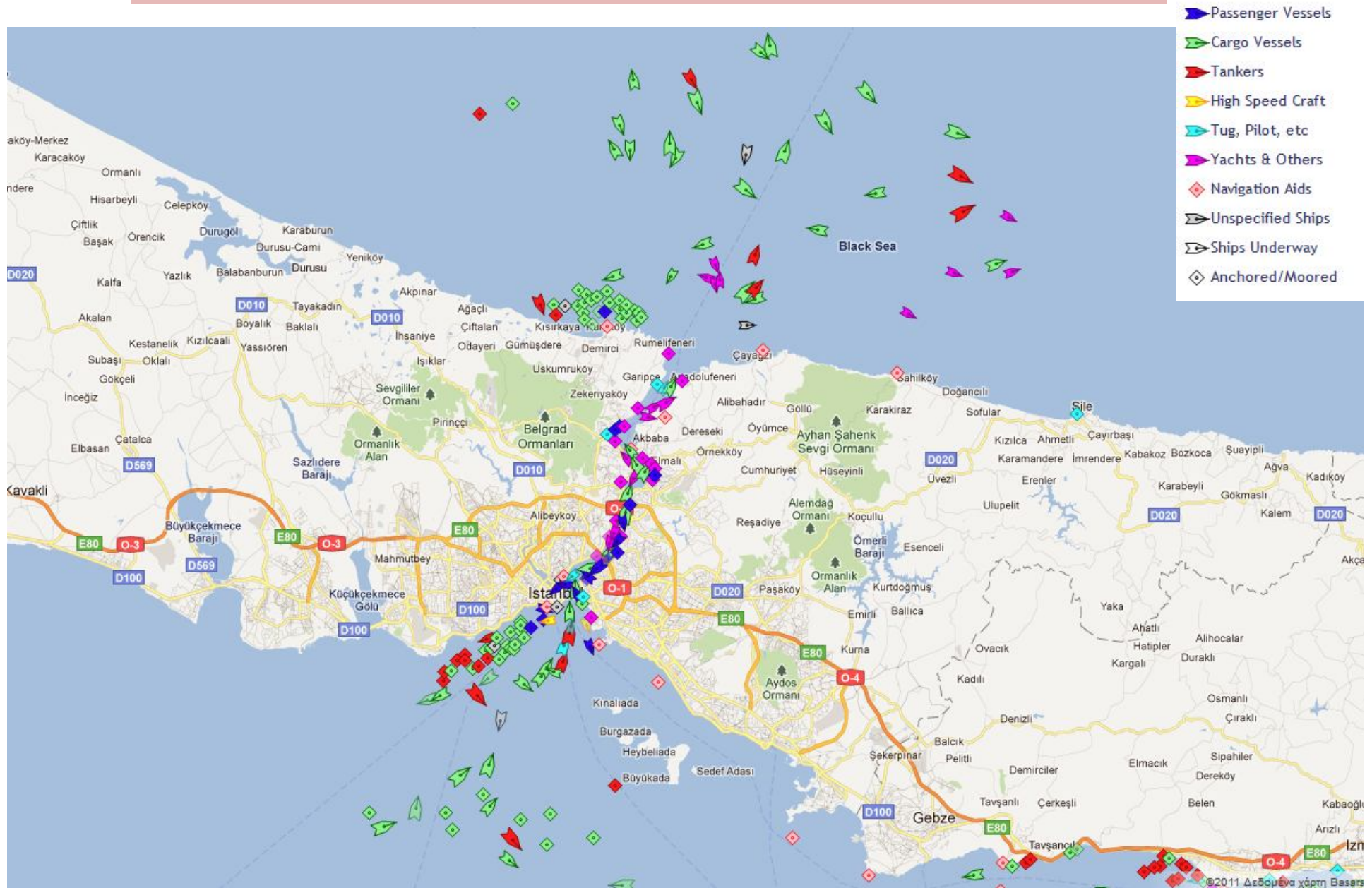




[Προβολή μεγαλύτερου χάρτη](#)

# MARINE TRAFFIC IN BOSPORUS

3



# RAILWAYS



# ROADS & PORTS



# Eastern Balkans

# CORE: ROADS & PORTS

5



**The Italian and the Balkan peninsula**

# CORE: RAILWAYS

6



**The Italian and the Balkan peninsula**

# SOUTHERN BALKANS: ROADS AND PORTS

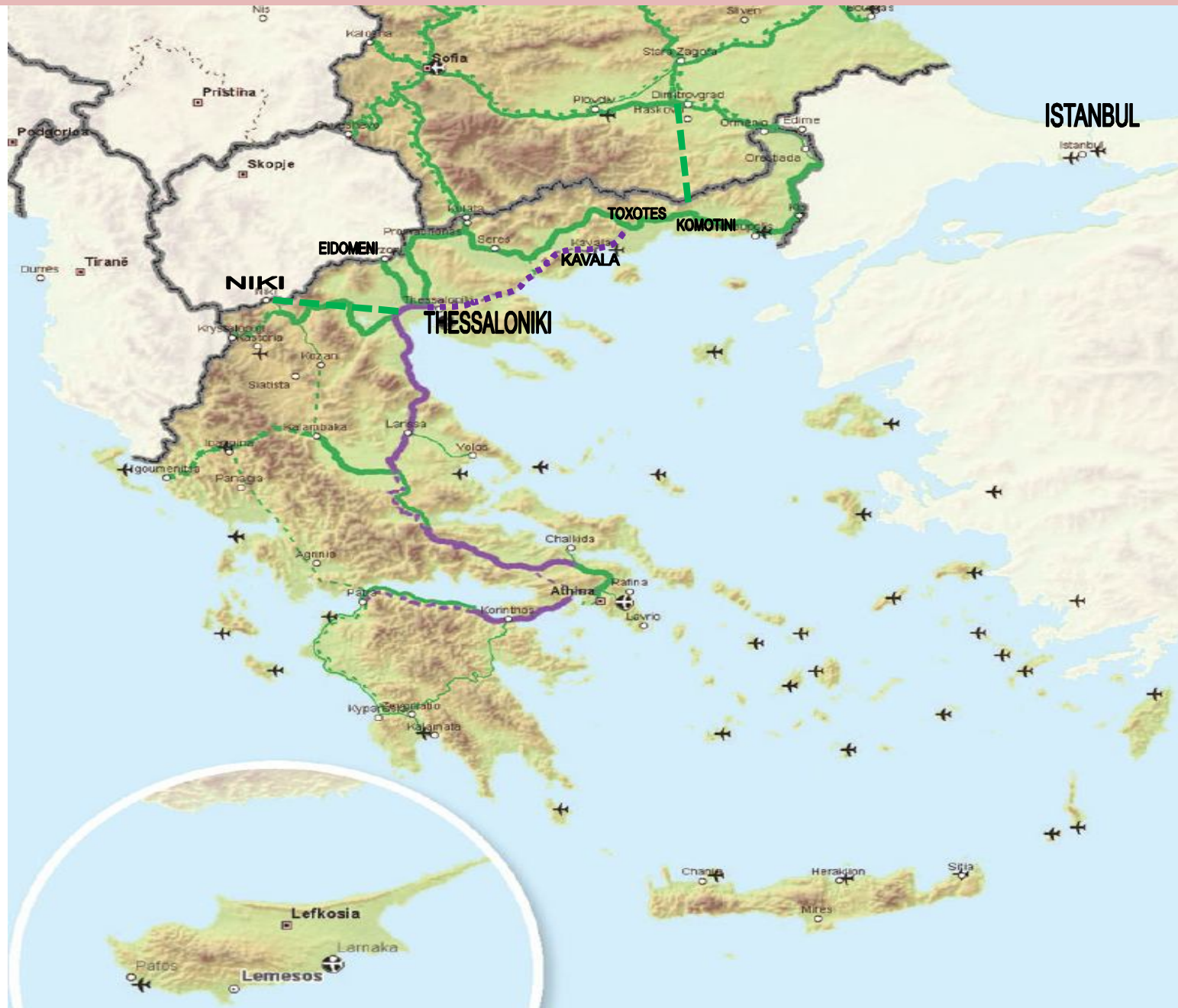
7

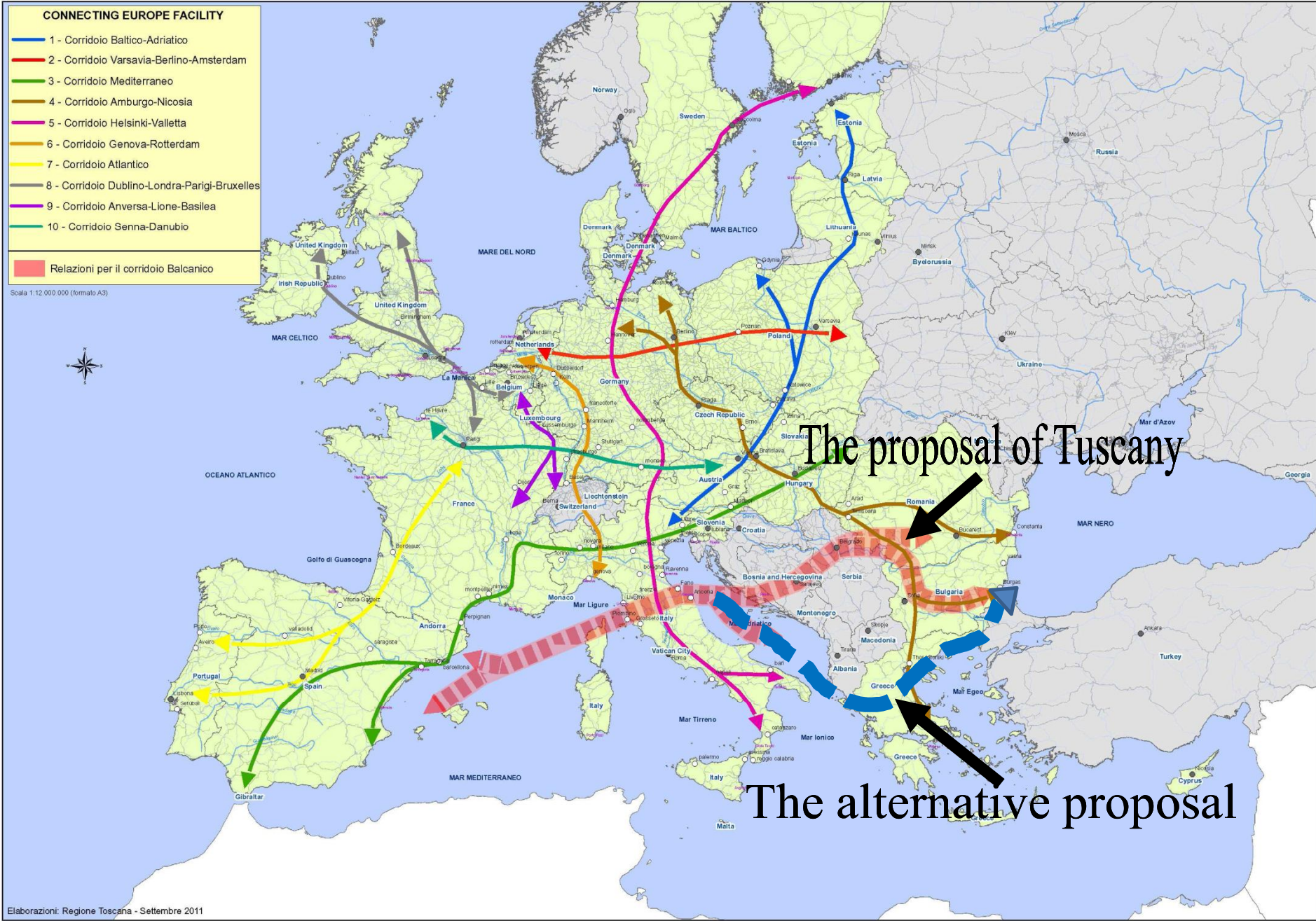




# SOUTHERN BALKANS: RAILWAYS

8





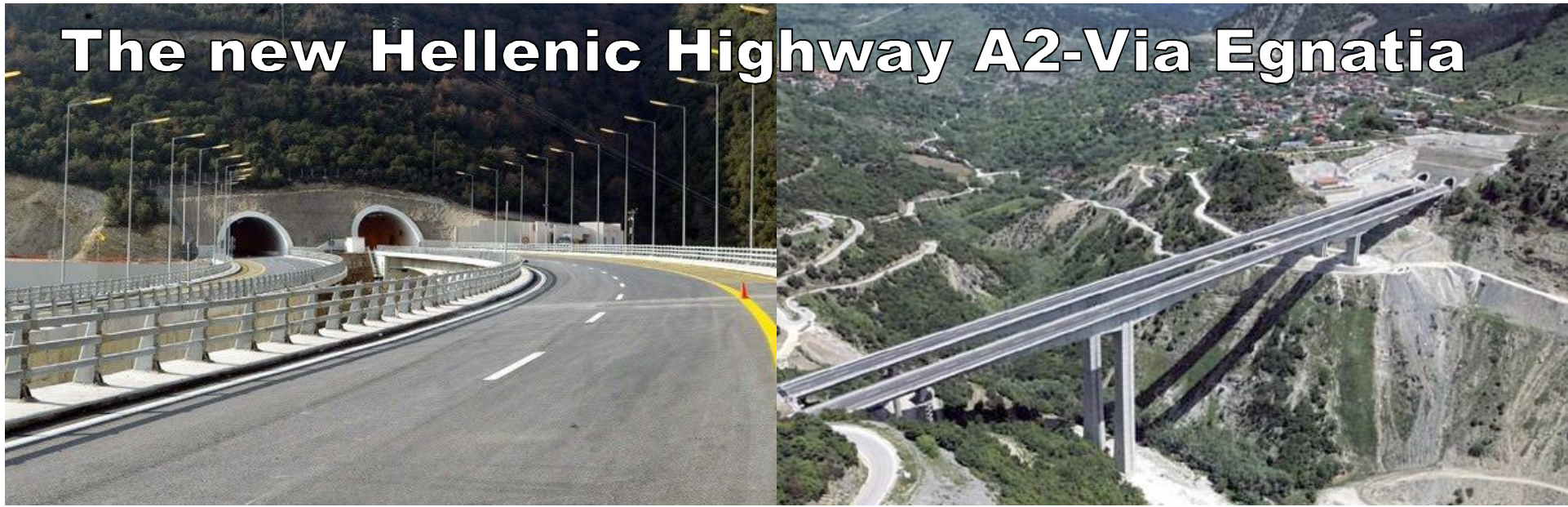
# Suggested proposal for the IMC

10





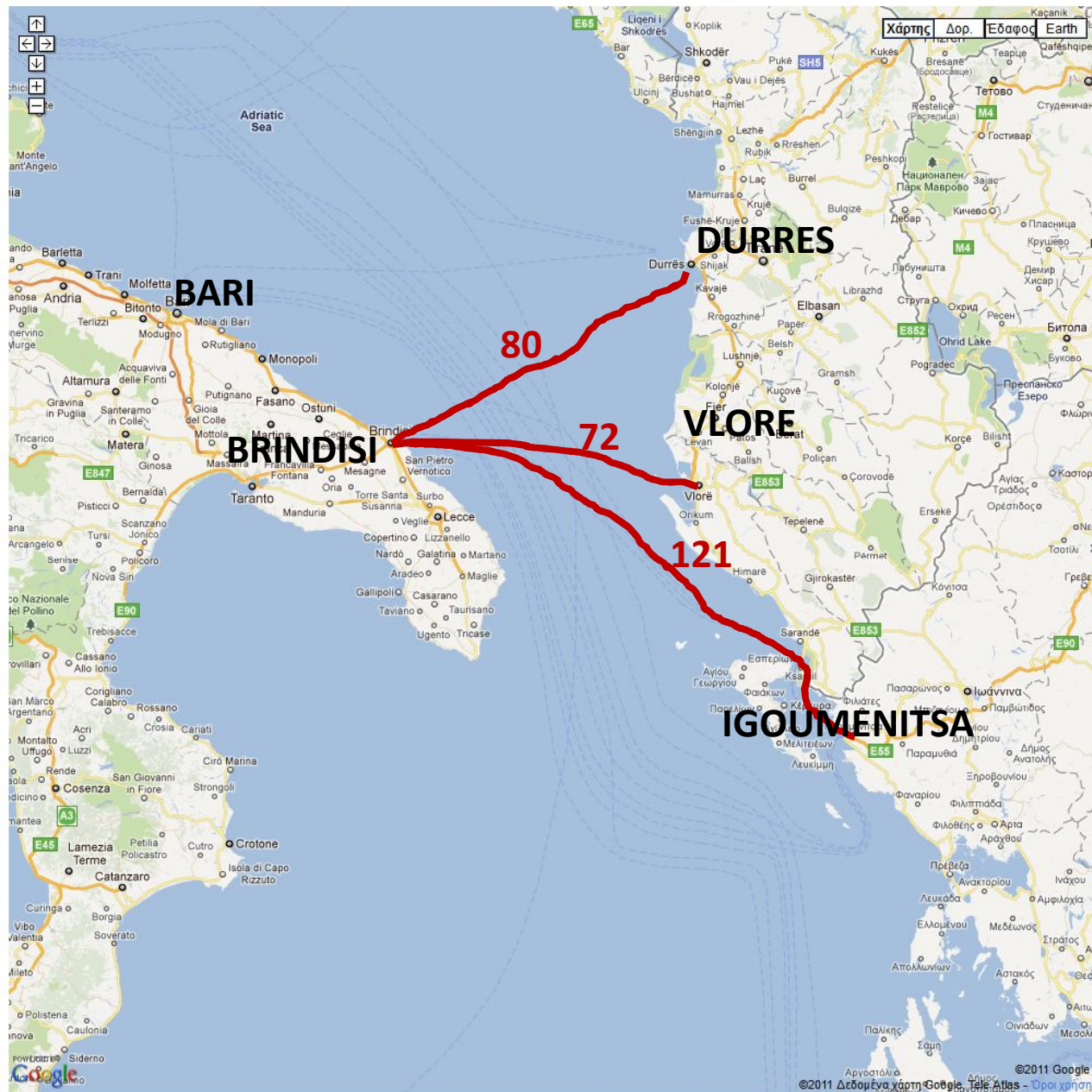




The new Hellenic Highway A2-Via Egnatia

# Distances in nautical miles

14



[Προβολή μεγαλύτερου χάρτη](#)

©2011 Google - Δεδομένα χάρτη Google, Terra Atlas - Όροι χρήσης



[Προβολή μεγαλύτερου χάρτη](#)