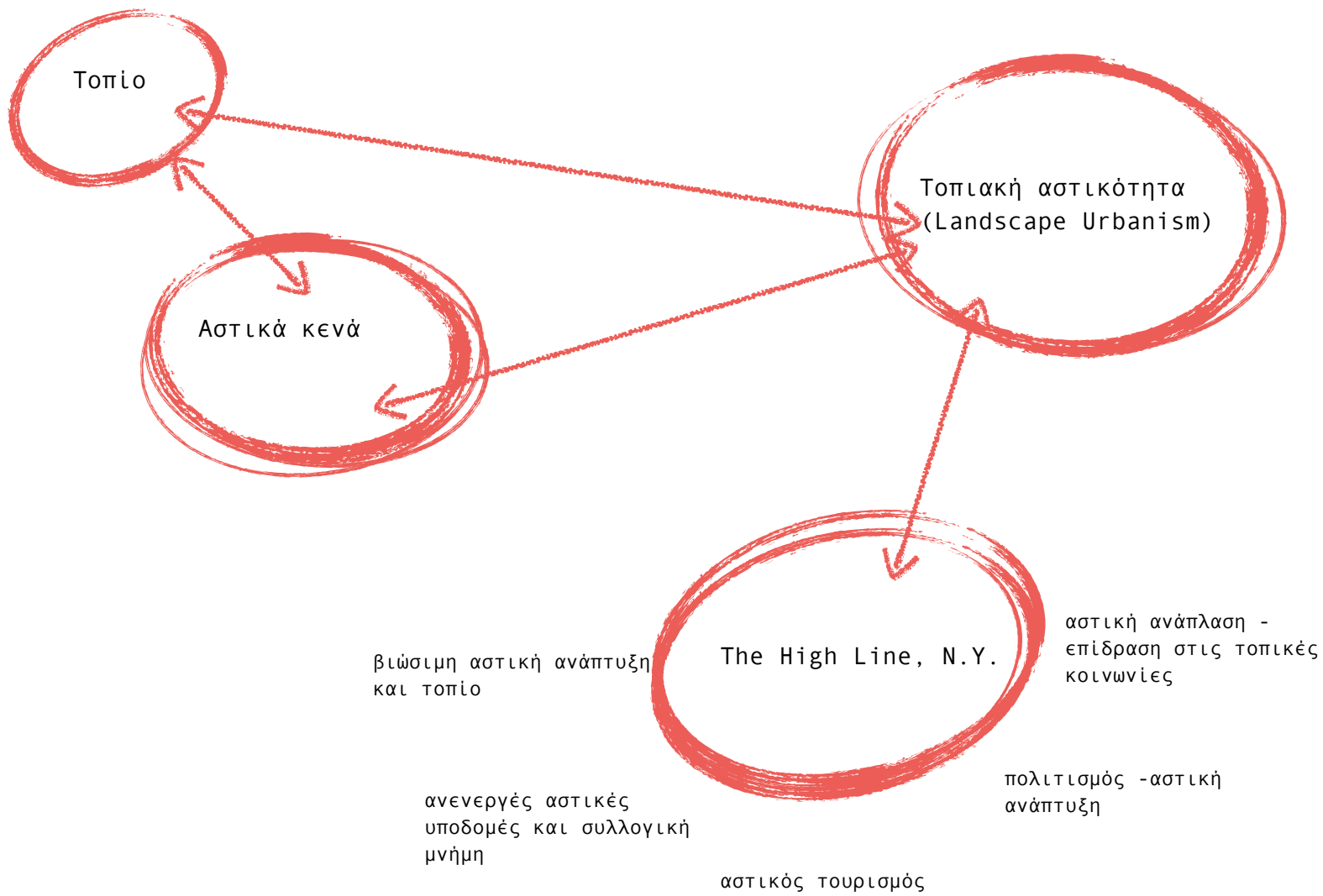


Αστικές αναπλάσεις και Τοπίο

Δημήτρης Πολυχρονόπουλος Καθηγητής Αστικού και Αρχιτεκτονικού Σχεδιασμού, Τμήμα Αρχιτεκτόνων Μηχανικών, ΔΠΘ.
Μαρία Γρηγοριάδου Δρ. Αρχιτέκτων Μηχ., Συμβασιούχος διδάσκουσα, Τμήμα Αρχιτεκτόνων Μηχανικών, ΔΠΘ.



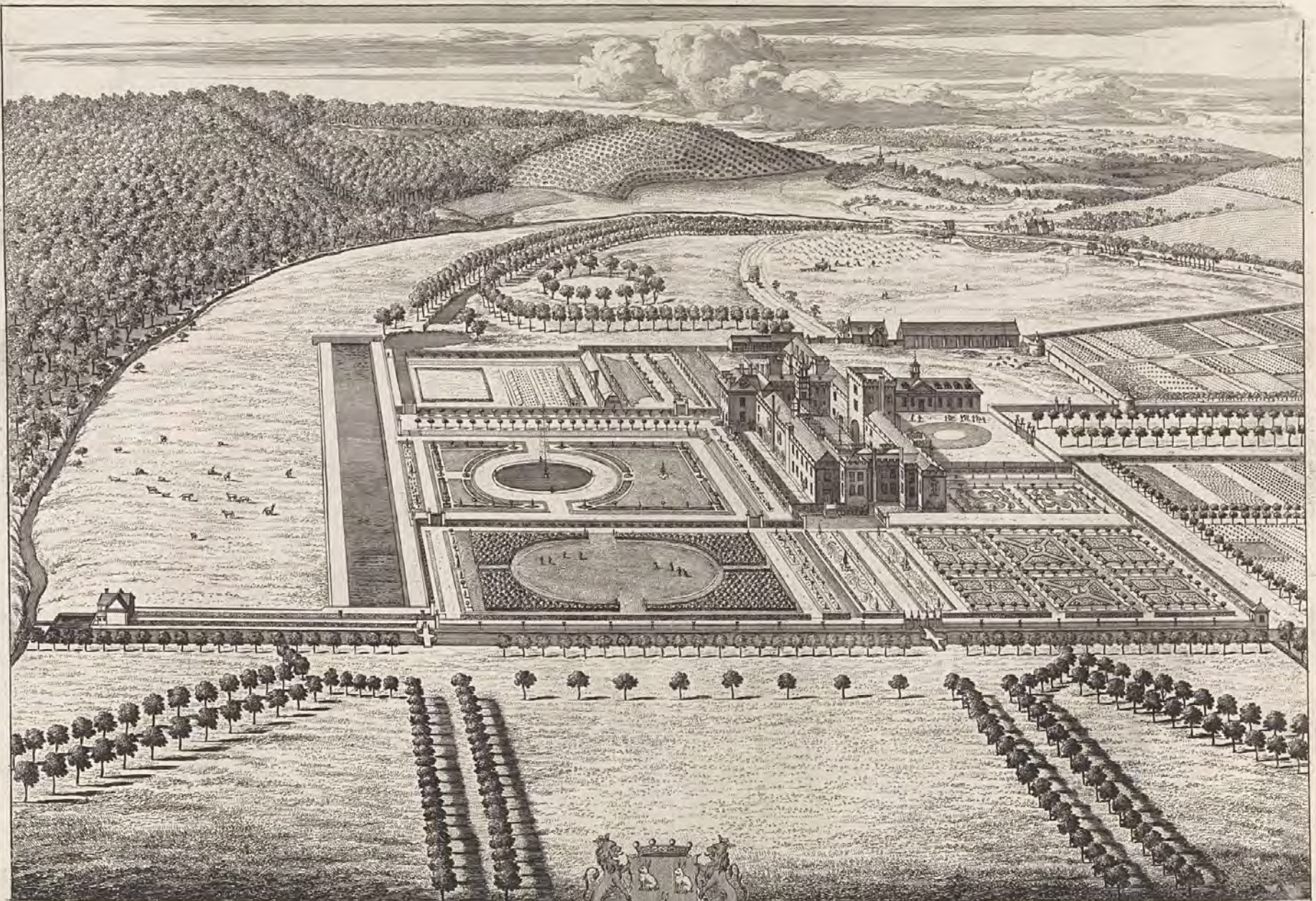
Η αντίληψη για το Τοπίο

Το “Τοπίο” ως μια νοητική κατασκευή σε διάσταση με τη “Φύση”

Το πολιτισμικό πλαίσιο

Η εμπρόθετη διάθεση του υποκειμένου

Η μνήμη - συλλογική και ατομική, αφηγήσεις



*Hampton Court in Herefordshire the Seat
Baron of Clanbrazell in the Kingdom of Ireland.*

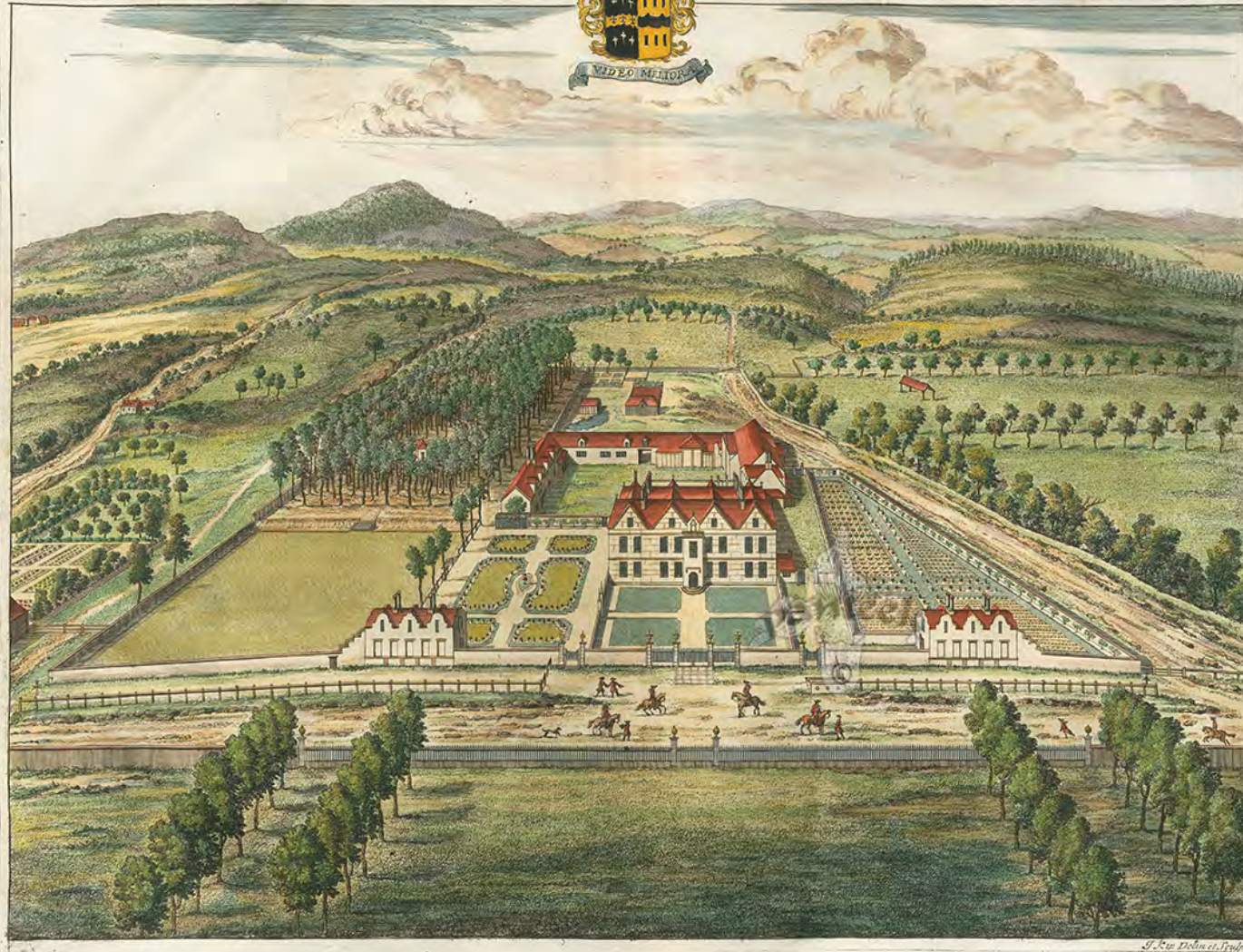


*of the R.^t Hon.^{ble} Tho: Lord Coningsby
& one of his Maj.^{ty} Most Hon.^{ble} Privy Council.*

Nibley the Seat of



George Smyth Esq.



Johannes Kip (1652/53, Amsterdam - 1722, Westminster) was a Dutch draftsman, engraver and print dealer. Together with Leonard Knyff, he made a speciality of engraved views of English landscapes, architecture and country houses. Born in the Netherlands, Johannes Kip settled in England around 1690. He was a topographical engraver most famous for his depictions of country houses in the book; 'Britannia Illustrata' on which he collaborated with Leonard Knyff (1707). Although this is his most well known work, he was a prolific artist who worked on many other important projects.



Nicolas Poussin / Landscape with a Calm / Year c 1651 oil on canvas Dimensions 97 x 131 cm
(38 3/16 x 51 9/16 in)
Collection J. Paul Getty Museum, Los Angeles



Nicolas Poussin - Landscape with Saint John on Patmos 1640

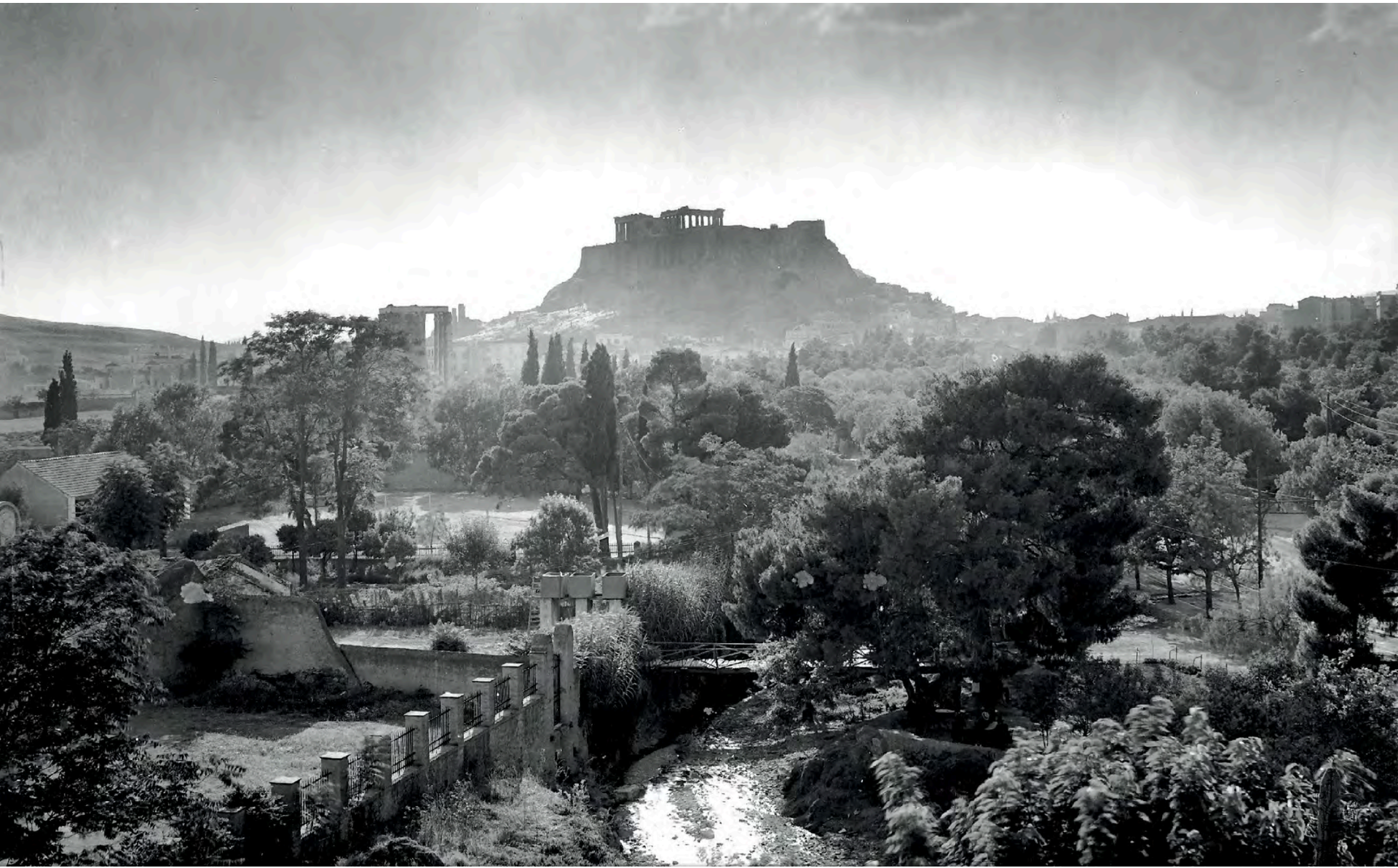


Nicolas Poussin(1594-1665) Paysage avec Orphée et Eurydicea / Landscape With Orpheus and Eurydice

Burning Castel Sant'Angelo, a Roman landmark seems to appear in the background.



Nicolas Poussin (1594-1665)/ Et in Arcadia ego (Les bergers d'Arcadie/ The Arcadian Shepherds)1637-38 French Baroque/Louvre, Paris
Pastoral scene with idealized shepherds from classical antiquity clustering around an austere tomb .



αστικά κενά - υποδοχείς τοπίων



Aldo van Eyck projects / 700 abandoned places in Amsterdam between 1948 and 1978
Playgrounds for kids, and grown-up people.



Κερατσίνι "Λιπάσματα"



THE HIGH LINE N.Y.

Corner's main argument includes development of four provisional themes :

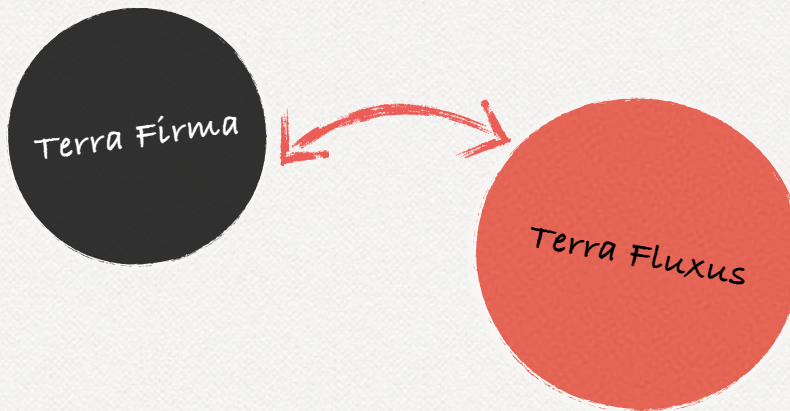
a. Processes over time

b. The Staging of Surfaces

c. The Operational or Working Method

d. The Imaginary

Terra Fluxus by James Corner (Landscape Urbanism Reader)



“This work must necessarily view the entire Metropolis as a living arena of processes and exchanges over time, allowing new forces and relationships to prepare the ground for new activities and patterns of occupancy. The designation **Terra firma** (firm, not changing, fixed and definite) gives way in favor of shifting processes coursing through and across the urban field : **Terra fluxus**” (J. Corner, Terra fluxus)

The Landscape Urbanism Reader





THE HIGH LINE PUBLIC PARK | MANHATTAN N.Y.- USA | JAMES CORNER FIELD OPERATION WITH DILLER SCOFIDIO + RENFRO | 2008 -







NEW YORK CENTRAL R.R. CO.
33RD ST. FREIGHT STATION

MICHIGAN
CENTRAL
540920
WT 47,000 LBS











8317

No. 1111 Taken DEC 1917
BY GEORGE W. BENTLEY Building
NEW YORK City
GEORGE W. BENTLEY
GEORGE W. BENTLEY COMPANY



No. 64 Taken 6-30-33
N.Y. C. VIADUCT Building
N.Y. City
N.Y. CENTRAL Architect
GEORGE A. FULLER COMPANY
8411





8400

No. 54 Taken 6-3-33
N.Y.C. VIADUCT Building
N.Y.
N.Y. CENTRAL
GEORGE A. FULLER COMPANY





8350

8350

NEW YORK CENTRAL

11th AVE
W. 30 ST.
ONE-WAY

NEW YORK CENTRAL SYSTEM
TRAFFIC CONTROL
BY SIGNALS AND SWITCHES

WAREHOUSE No 5

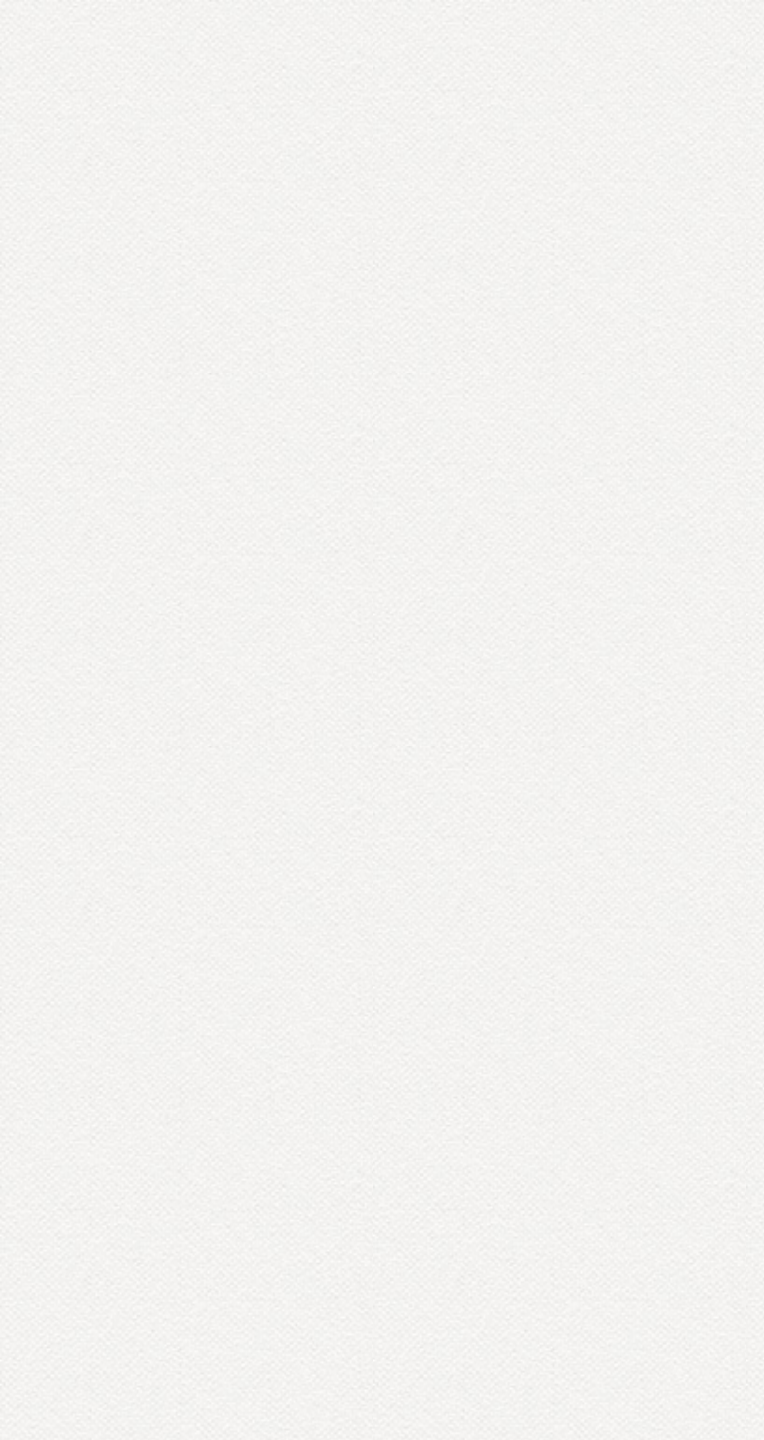






GREAT ATLANTIC PAPER CO.
MILL AGENTS
DISTRIBUTORS &
CONVERTERS

GREAT ATLANTIC PAPER CO.







Since 2000, photographer Joel Sternfeld has been documenting the abandoned elevated railway, the High Line, which runs down the West Side of Manhattan.

Steidl



















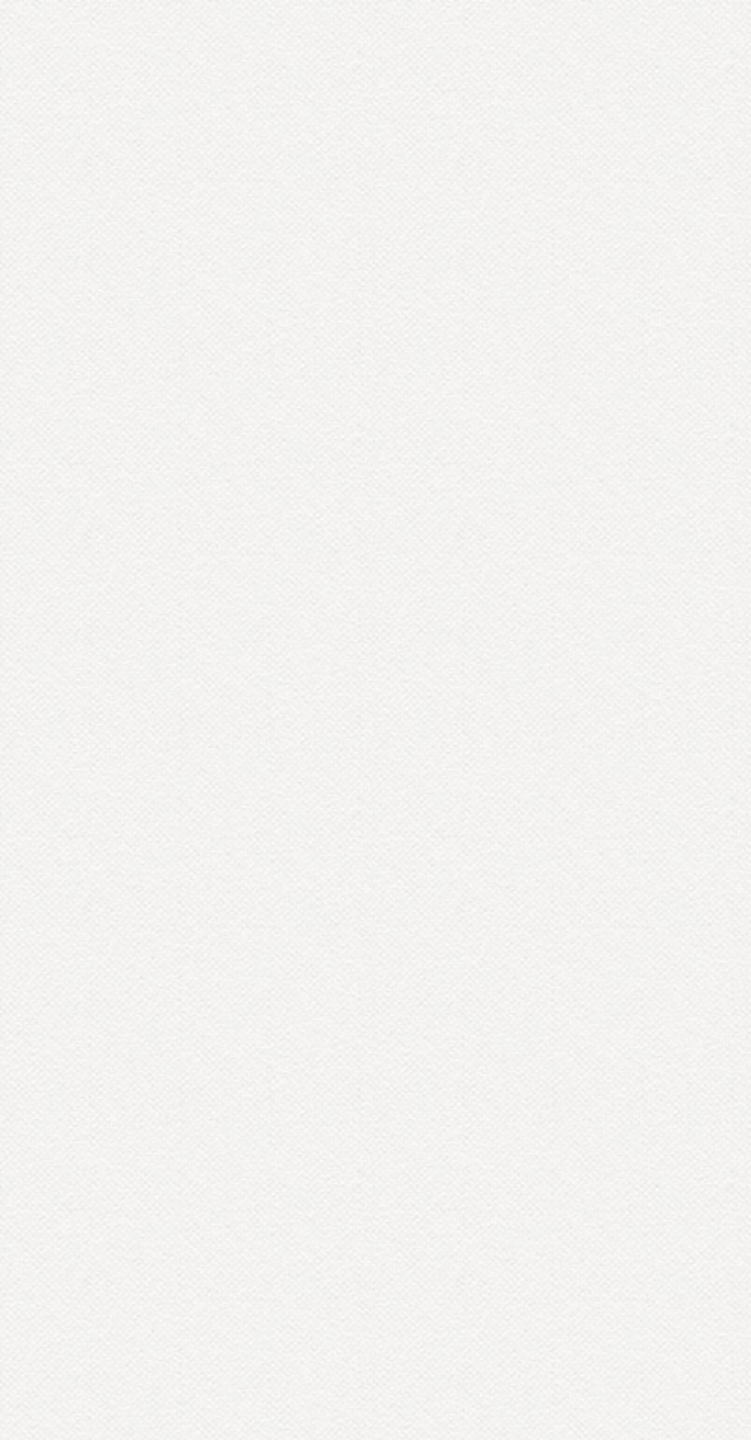




























KEEP IT SIMPLE

KEEP IT WILD

KEEP IT QUIET

KEEP IT SLOW



Hudson Yards

The High Line

Chelsea

Meatpacking District



2014

2018

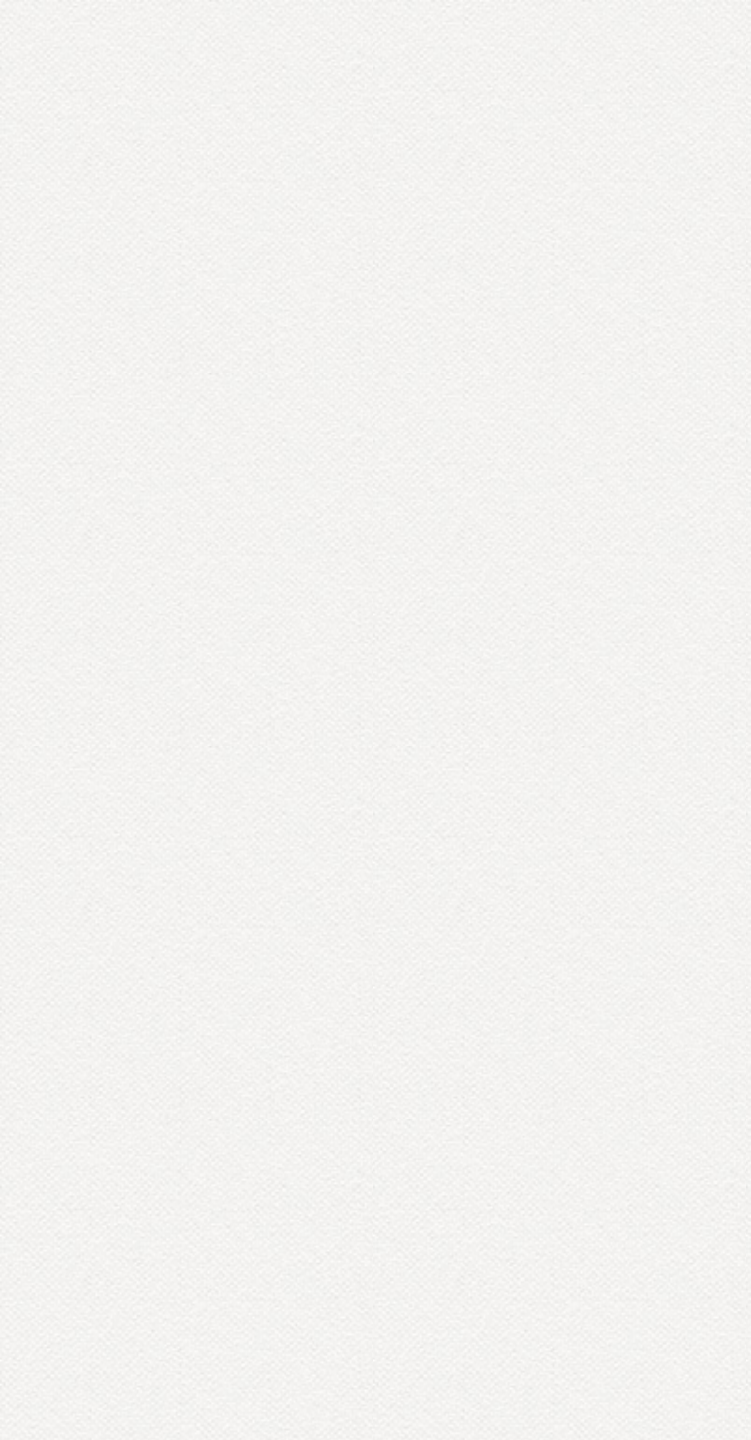
2011

2009

- Section 1 (opened 2009)
- Section 2 (opened 2011)
- Section 3 (opened 2014)
- The Spur (opening 2018)
- Stairs
- Elevator access
- Ramp access















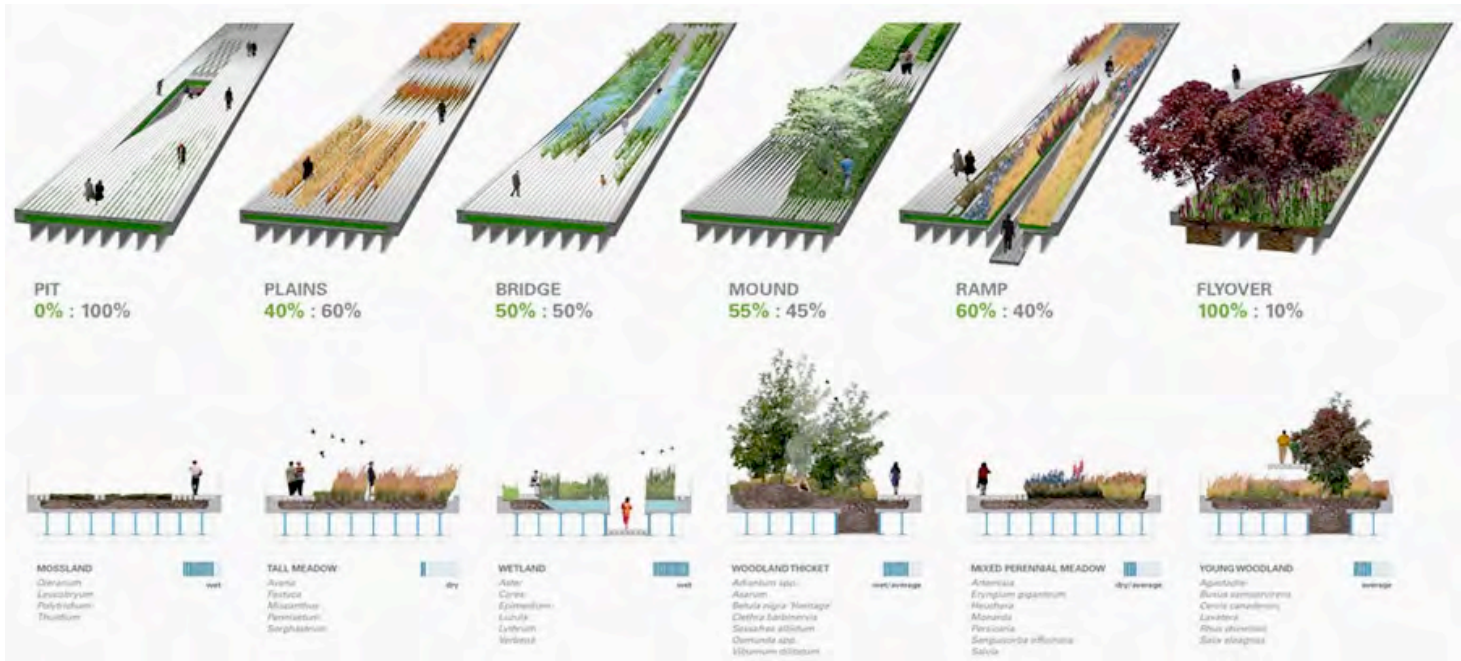







PROTECT THE PLANTS
STAY ON THE PATH

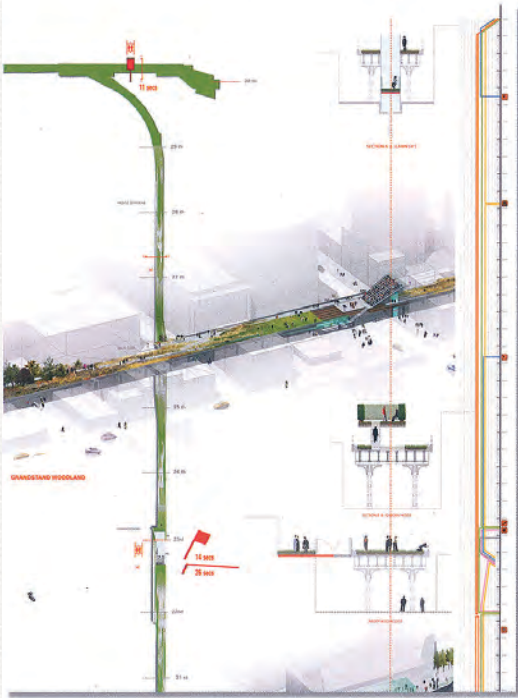
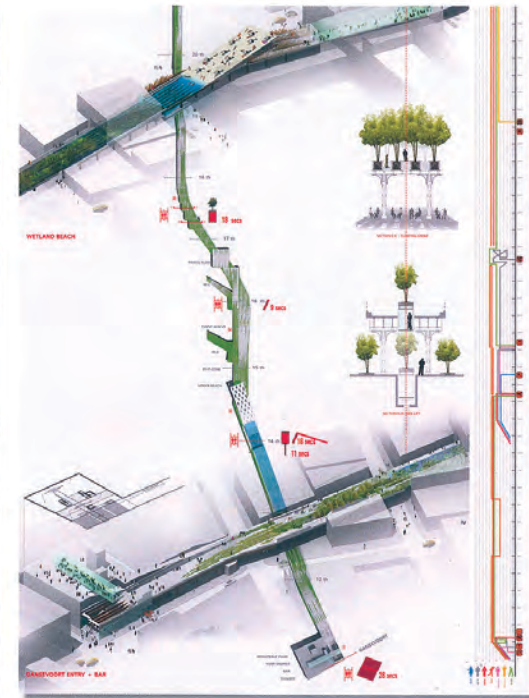
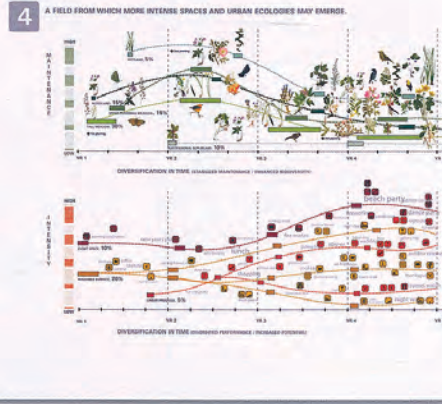
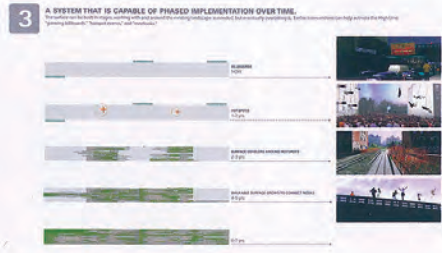
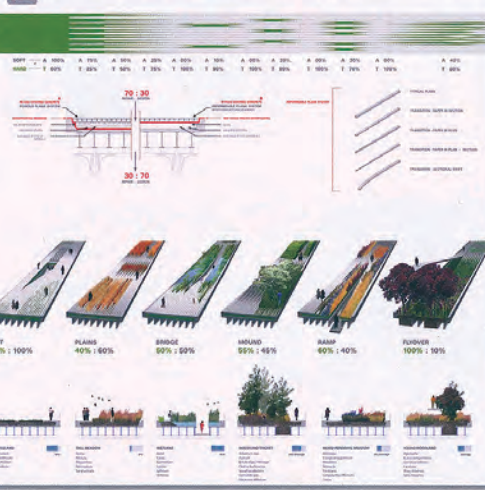




WHAT WILL GROW HERE ?

Inspired by the melancholic, unruly beauty of the High Line where nature has reclaimed a once vital piece of urban infrastructure, the team retools this industrial conveyor into a post-industrial instrument of leisure, life and growth. By changing the rules of engagement between plant life and pedestrians, our strategy of **AGRI-TECTURE** combines organic and building materials into gradients of changing proportions that accommodate the wild, the cultivated, the intimate, and the hyper-social. In stark contrast to the speed of Hudson River Park, this parallel linear experience is marked by slowness, distraction and an otherworldliness that preserves the strange character of the High Line. Providing flexibility and responsiveness to the changing needs, opportunities, and desires of the dynamic context, our proposal is designed to remain perpetually unfinished, sustaining emergent growth and change over time.

1 AGRI-TECTURE: A FLEXIBLE, RESPONSIVE SYSTEM OF MATERIAL ORGANIZATION WHERE DIVERSE ECOLOGIES MAY GROW.





DURATION



PAUSE
(1-5 MINS.)

REST
(5-30 MINS.)

LOUNGE
(30-60 MINS.)

WORK
(+1 HOUR)

SOCIABILITY



INDIVIDUAL

COUPLE

GROUP

EVENT



PEEL-UP SEATING



PEEL-UP SEATING W/ TABLE



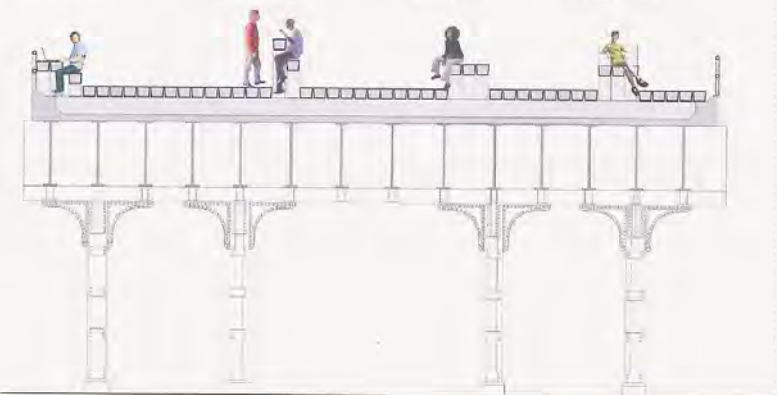
PEEL-DOWN STOOP SEATING

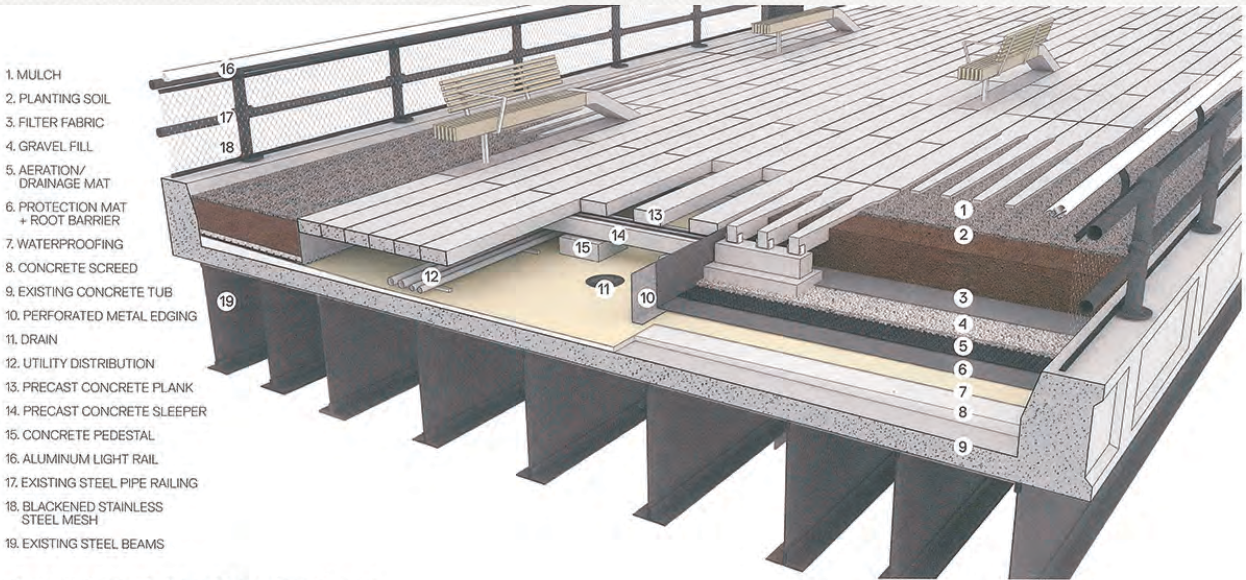
WORKSTATION

LUNCH STATION

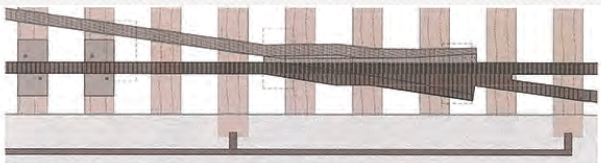
QUICK STOP

CHAISE LOUNGE

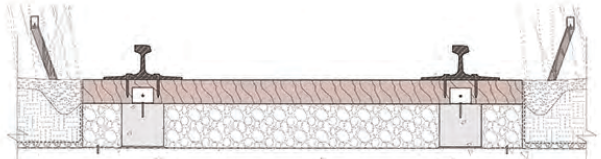




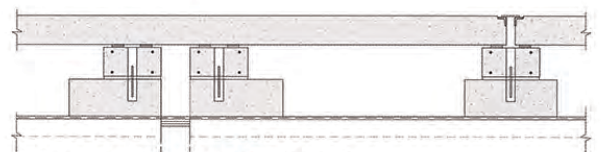
Typical High Line Buildup (Section Perspective)



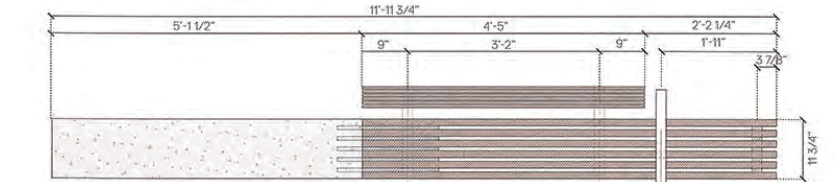
Embedded Frog at Rail Track Walkway (Plan)



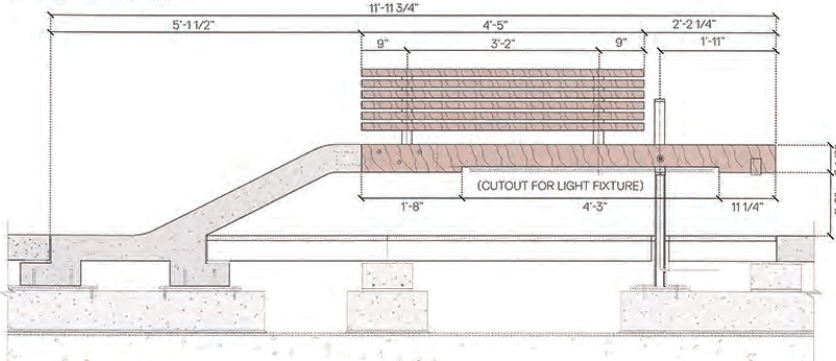
Rail Track Walkway (Section)



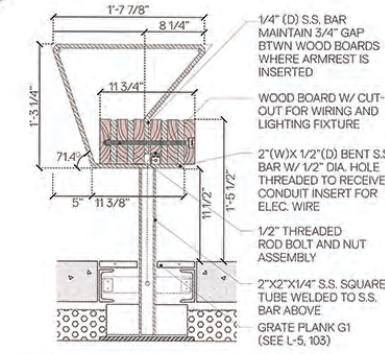
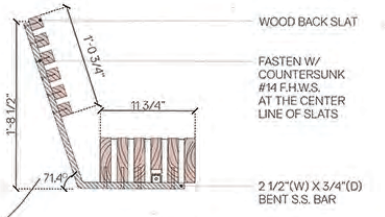
Concrete Substructure at Planking (Section)



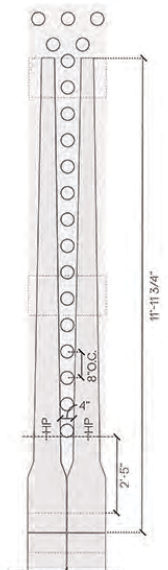
Peel-Up Bench (Plan)



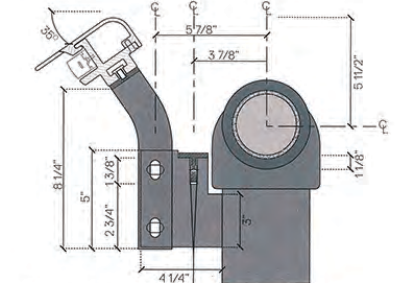
Peel-Up Bench (Elevation)



Peel-Up Bench (Section Details)



Plant/Plank (Plan)



Extruded Aluminum Light Rail at Existing Pipe Railing (Section Detail)



Guardrail (Axonometric)

- | | | | |
|-----------------------|------------------------|------------------------|----------------------------|
| ● BIRUKI NASTA | ● GILGENIA TRIFOLIATA | ● SPERMATOPHYTES | ● GIBBERNUS URON BITTERLEY |
| ● ASTER LITTE CARLINI | ● KUMARAKIA GIBBERNA | ● SILENE CRISTAGALLANA | ● SILENE CRISTAGALLANA |
| ● ASTER TWILIGHT | ● EUPHORBIA GRIFITHII | ● VERONICA LITTE SPIKE | ● VERONICA LITTE SPIKE |
| ● EUPHORBIA GRIFITHII | ● GERANIUM WILSONIANUM | ● GERANIUM WILSONIANUM | ● GERANIUM WILSONIANUM |
| ● EUPHORBIA GRIFITHII | ● GERANIUM WILSONIANUM | ● GERANIUM WILSONIANUM | ● GERANIUM WILSONIANUM |



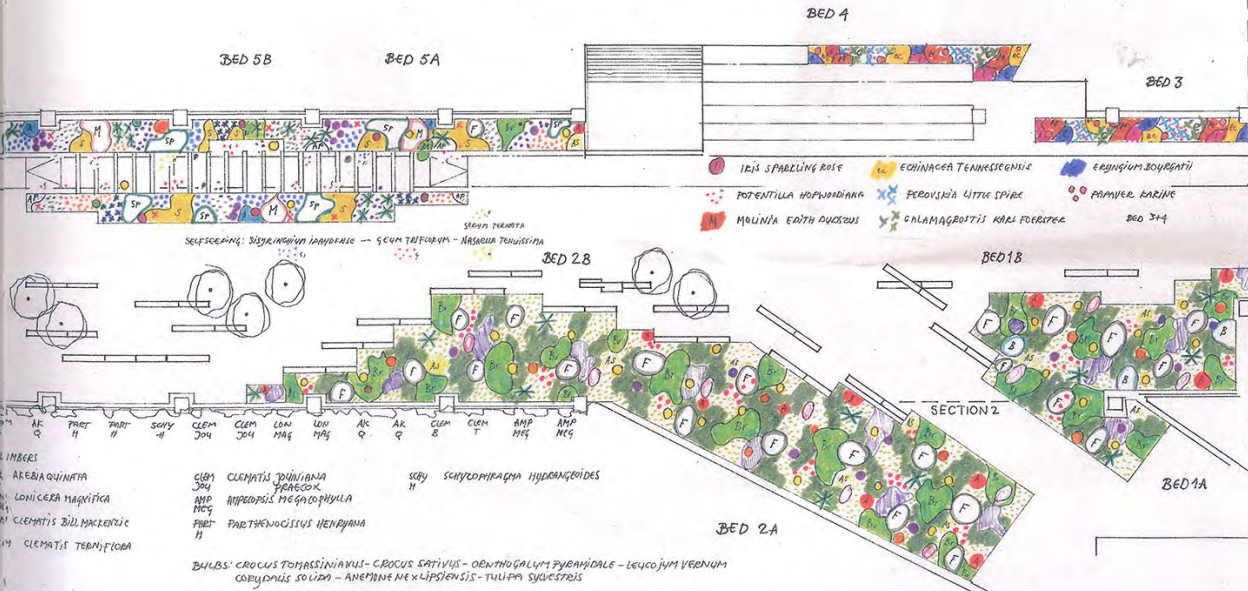
PLAZA



- | | | | | |
|-----------------------------|---------------------------|----------------------------------|-------------------------|-----------------------|
| F FESTUCA AESTIVINA SUPERBA | AS ANEMONE BLUE ICE | C CAMPANULA GLOMERATA 'CAROLINE' | E EUPHORBIA GRIFITHII | G GILGENIA TRIFOLIATA |
| P PINK ANEMONE | S SPERMATOPHYTES | V VERONICA LITTE SPIKE | GW GERANIUM WILSONIANUM | SP SPERMATOPHYTES |
| GR GERANIUM | CB CIBEX BROMIODES | A ASTERATA 'ALICE' | G GERANIUM 'PATRICIA' | AS ANEMONE BLUE ICE |
| DE DESIDERIA RUTYNSKII | DL DELONICHEA 'GLADIATUS' | M MOLINIA 'MOOREHEAD' | | AS ANEMONE BLUE ICE |

TOWER C

- AT ASTER PANCHYOIDES
- AT ASTER TWILIGHT
- EUPHORBIA GRIFITHII
- VERATEUM NIGRUM
- SCYTHLARIA INCONA
- H HORMARIA BEAD BURLAMA
- BOMPELOIA QUARTERBUNGA
- MECONA 'ORBY SCOUT'
- PYGAEANTHEMUM MUTICUM
- ANEMONE BLUE ICE
- SPERMODIUS HETEROLEPIS



EASTERN RAIL YARDS PHASE 1
BRIDGE B
PIET OUDOLF + JCFO
PLANTING DESIGN
SCALE 1:100 METRIC
DATE: JUNE 2012









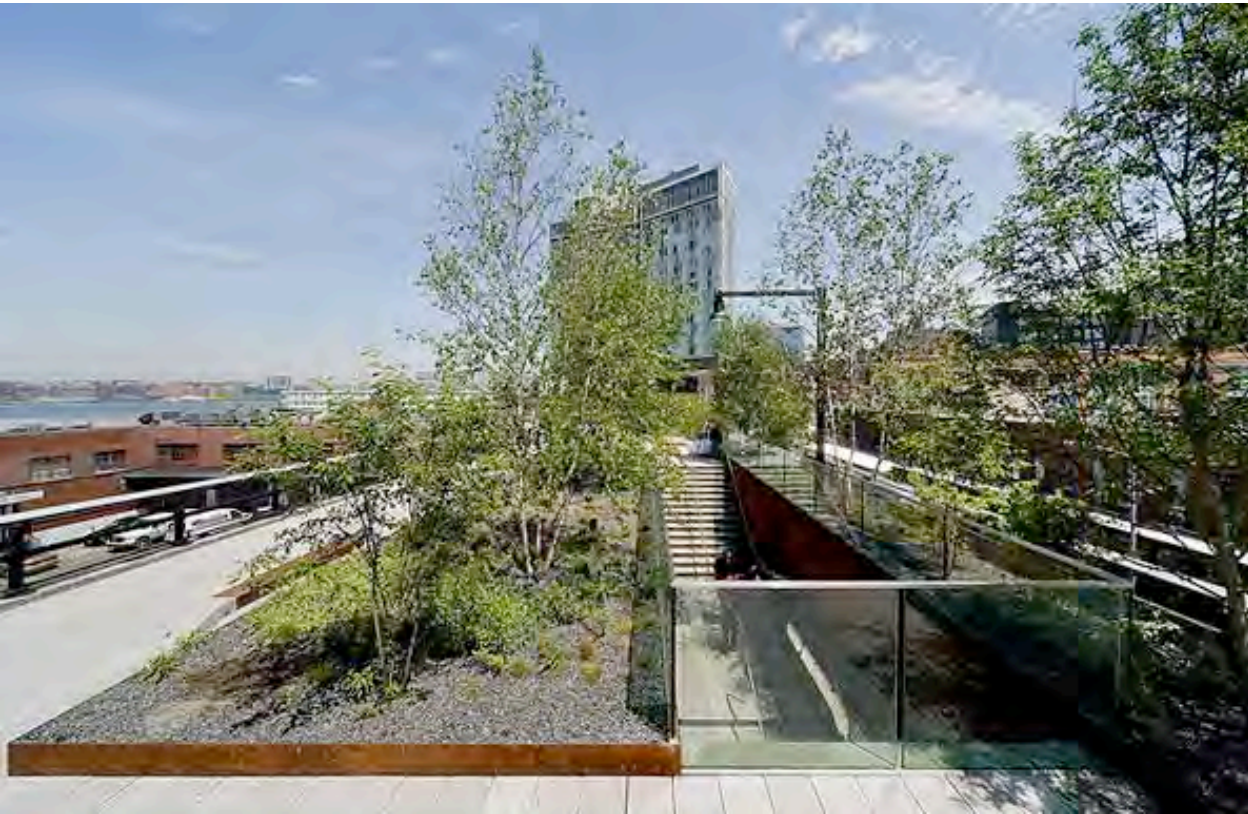


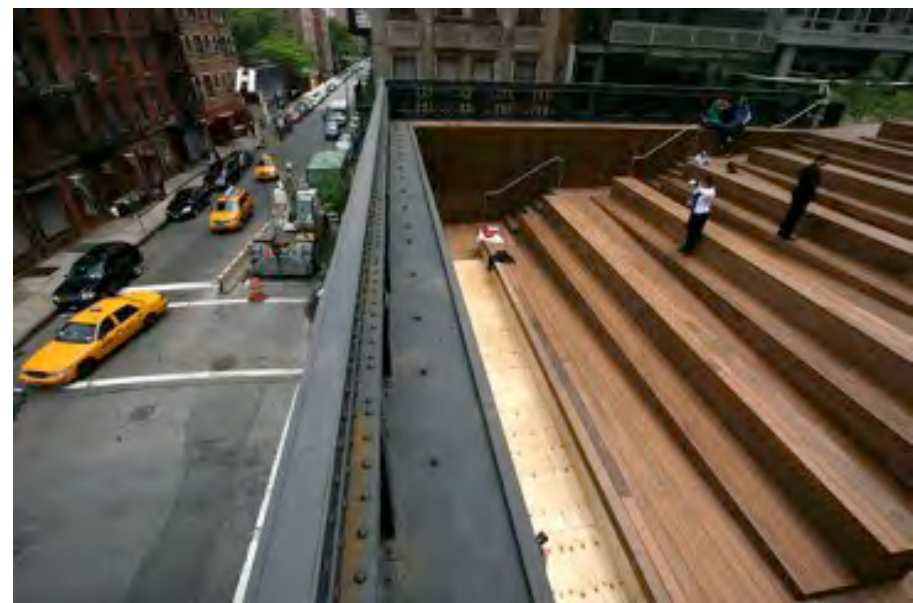


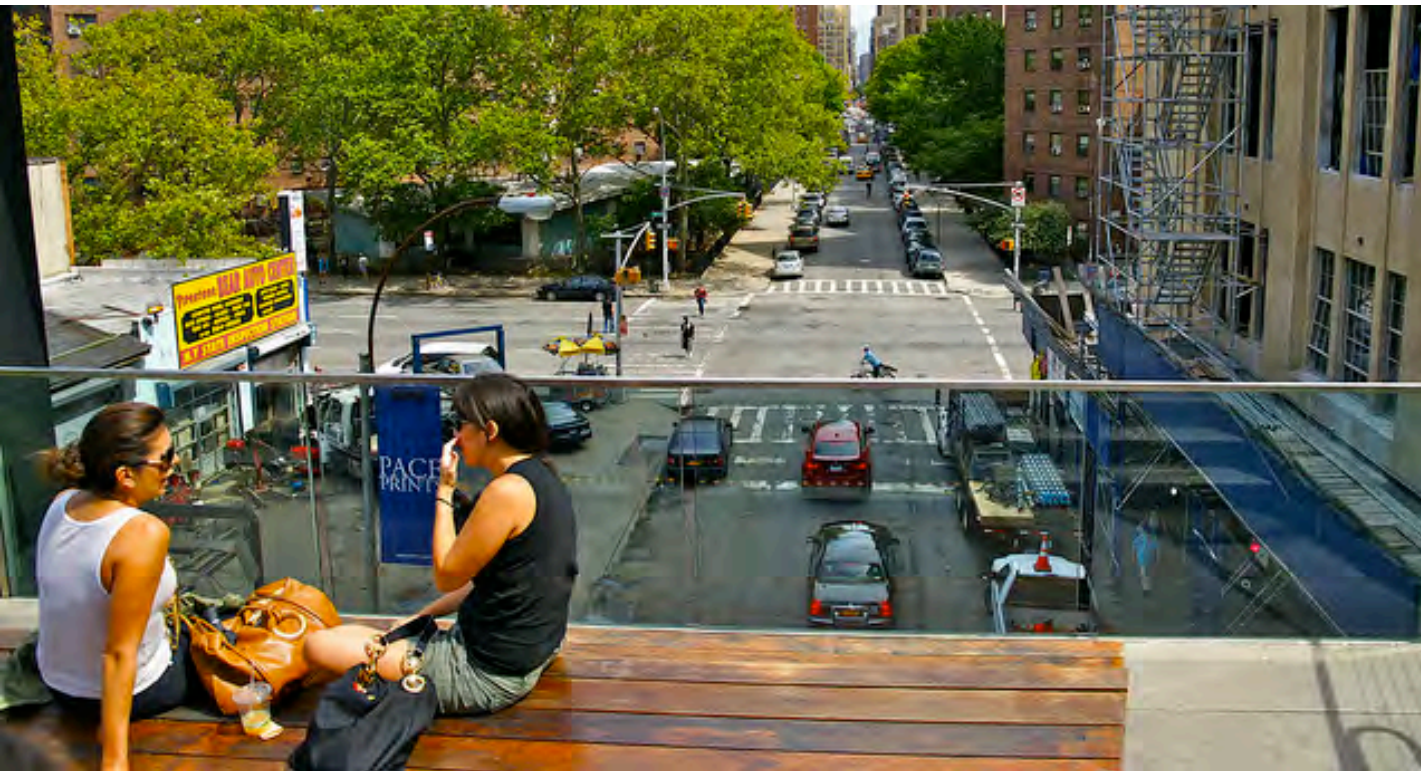




















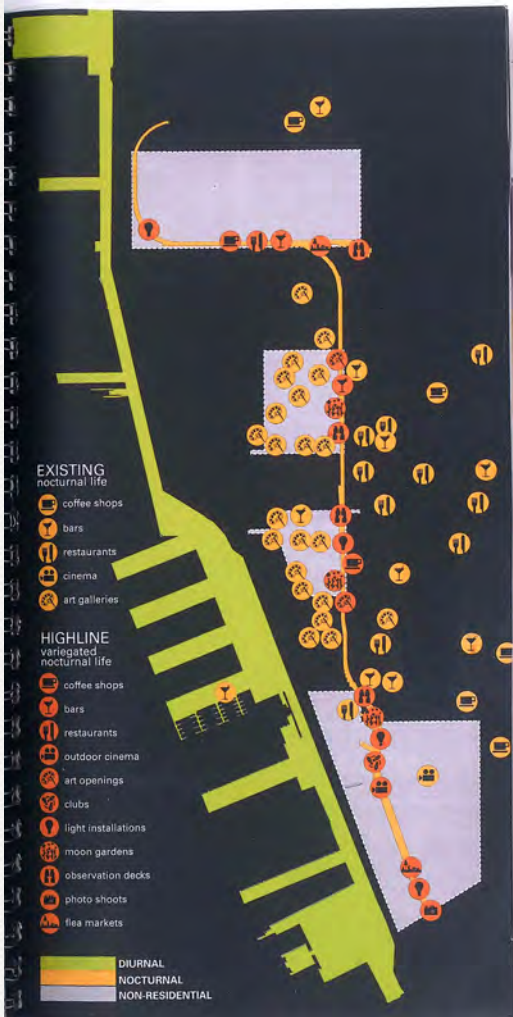
2014

2018

2011

2009

- Section 1 (opened 2009)
- Section 2 (opened 2011)
- Section 3 (opened 2014)
- The Spur (opening 2018)
- Stairs
- Elevator access
- Ramp access



Existing economy

- PROGRAMS
- HABITATS
- ATMOSPHERES
- MICRO-CLIMATES
- CONNECTIONS
- ECOSYSTEM
- NOCTURNAL LIFE

ECONOMIES WILL GROW HERE.

COMMUNITIES

As the High Line becomes a public space, it will significantly influence development of the surrounding areas. It will integrate adjacent neighborhoods and become a destination point for visitors. It will support existing local economies and generate new ones, as it did when it was first erected.

EXISTING economy



HIGHLINE generated economy



High line generated economy



HIGH LINE

HIGH LINE IN YOUR INBOX

Sign up for the High Line newsletter and receive the latest information first.



PUBLIC PROGRAMS

[Out of Line](#) | [¡Arriba!](#) | [B.Y.O.](#) | [Culture Shock](#)





