

# Image Filtering

Computer Vision  
James Hays, Brown

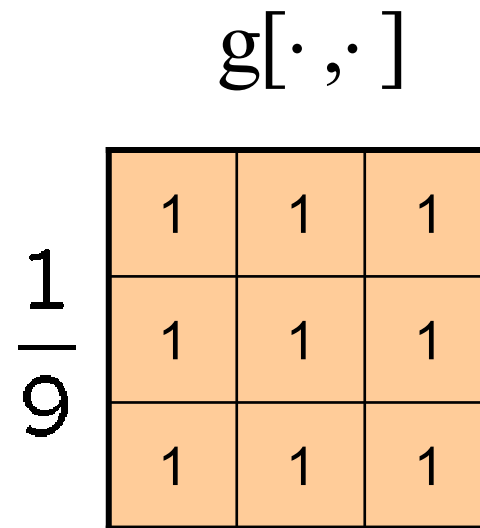
# Three views of filtering

- Image filters in spatial domain
  - Filter is a mathematical operation of a grid of numbers
  - Smoothing, sharpening, measuring texture
- Image filters in the frequency domain
  - Filtering is a way to modify the frequencies of images
  - Denoising, sampling, image compression
- Templates and Image Pyramids
  - Filtering is a way to match a template to the image
  - Detection, coarse-to-fine registration

# Image filtering

- Image filtering: compute function of local neighborhood at each position
- Really important!
  - Enhance images
    - Denoise, resize, increase contrast, etc.
  - Extract information from images
    - Texture, edges, distinctive points, etc.
  - Detect patterns
    - Template matching

# Example: box filter



# Image filtering

$$g[\cdot, \cdot] \frac{1}{9} \begin{bmatrix} 1 & 1 & 1 \\ 1 & 1 & 1 \\ 1 & 1 & 1 \end{bmatrix}$$

$f[\cdot, \cdot]$

0	0	0	0	0	0	0	0	0	0	0
0	0	0	0	0	0	0	0	0	0	0
0	0	0	90	90	90	90	90	0	0	0
0	0	0	90	90	90	90	90	0	0	0
0	0	0	90	90	90	90	90	0	0	0
0	0	0	90	0	90	90	90	0	0	0
0	0	0	90	90	90	90	90	0	0	0
0	0	0	0	0	0	0	0	0	0	0
0	0	90	0	0	0	0	0	0	0	0
0	0	0	0	0	0	0	0	0	0	0

$h[\cdot, \cdot]$


$$h[m, n] = \sum_{k, l} g[k, l] f[m + k, n + l]$$

# Image filtering

$$g[\cdot, \cdot] \frac{1}{9} \begin{bmatrix} 1 & 1 & 1 \\ 1 & 1 & 1 \\ 1 & 1 & 1 \end{bmatrix}$$

$f[\cdot, \cdot]$

0	0	0	0	0	0	0	0	0	0
0	0	0	0	0	0	0	0	0	0
0	0	0	90	90	90	90	90	0	0
0	0	0	90	90	90	90	90	0	0
0	0	0	90	90	90	90	90	0	0
0	0	0	90	0	90	90	90	0	0
0	0	0	90	90	90	90	90	0	0
0	0	0	0	0	0	0	0	0	0
0	0	90	0	0	0	0	0	0	0
0	0	0	0	0	0	0	0	0	0

$h[\cdot, \cdot]$

	0	10							

$$h[m, n] = \sum_{k, l} g[k, l] f[m + k, n + l]$$

# Image filtering

$$g[\cdot, \cdot] \frac{1}{9} \begin{bmatrix} 1 & 1 & 1 \\ 1 & 1 & 1 \\ 1 & 1 & 1 \end{bmatrix}$$

$f[\cdot, \cdot]$

0	0	0	0	0	0	0	0	0	0
0	0	0	0	0	0	0	0	0	0
0	0	0	90	90	90	90	90	0	0
0	0	0	90	90	90	90	90	0	0
0	0	0	90	90	90	90	90	0	0
0	0	0	90	0	90	90	90	0	0
0	0	0	90	90	90	90	90	0	0
0	0	0	0	0	0	0	0	0	0
0	0	90	0	0	0	0	0	0	0
0	0	0	0	0	0	0	0	0	0

$h[\cdot, \cdot]$

	0	10	20						

$$h[m, n] = \sum_{k, l} g[k, l] f[m + k, n + l]$$

# Image filtering

$$g[\cdot, \cdot] = \frac{1}{9} \begin{bmatrix} 1 & 1 & 1 \\ 1 & 1 & 1 \\ 1 & 1 & 1 \end{bmatrix}$$

$f[\cdot, \cdot]$

0	0	0	0	0	0	0	0	0	0
0	0	0	0	0	0	0	0	0	0
0	0	0	90	90	90	90	90	0	0
0	0	0	90	90	90	90	90	0	0
0	0	0	90	90	90	90	90	0	0
0	0	0	90	0	90	90	90	0	0
0	0	0	90	90	90	90	90	0	0
0	0	0	0	0	0	0	0	0	0
0	0	90	0	0	0	0	0	0	0
0	0	0	0	0	0	0	0	0	0

$h[\cdot, \cdot]$

	0	10	20	30					

$$h[m, n] = \sum_{k, l} g[k, l] f[m + k, n + l]$$



# Image filtering

$$g[\cdot, \cdot] = \frac{1}{9} \begin{bmatrix} 1 & 1 & 1 \\ 1 & 1 & 1 \\ 1 & 1 & 1 \end{bmatrix}$$

$f[\cdot, \cdot]$

0	0	0	0	0	0	0	0	0	0
0	0	0	0	0	0	0	0	0	0
0	0	0	90	90	90	90	90	0	0
0	0	0	90	90	90	90	90	0	0
0	0	0	90	90	90	90	90	0	0
0	0	0	90	0	90	90	90	0	0
0	0	0	90	90	90	90	90	0	0
0	0	0	0	0	0	0	0	0	0
0	0	90	0	0	0	0	0	0	0
0	0	0	0	0	0	0	0	0	0

$h[\cdot, \cdot]$

	0	10	20	30	30				

$$h[m, n] = \sum_{k, l} g[k, l] f[m + k, n + l]$$



# Image filtering

$$g[\cdot, \cdot] \frac{1}{9} \begin{bmatrix} 1 & 1 & 1 \\ 1 & 1 & 1 \\ 1 & 1 & 1 \end{bmatrix}$$

$f[\cdot, \cdot]$

0	0	0	0	0	0	0	0	0	0
0	0	0	0	0	0	0	0	0	0
0	0	0	90	90	90	90	90	0	0
0	0	0	90	90	90	90	90	0	0
0	0	0	90	90	90	90	90	0	0
0	0	0	90	0	90	90	90	0	0
0	0	0	90	90	90	90	90	0	0
0	0	0	0	0	0	0	0	0	0
0	0	90	0	0	0	0	0	0	0
0	0	0	0	0	0	0	0	0	0

$h[\cdot, \cdot]$

	0	10	20	30	30				
						?			
				50					

$$h[m, n] = \sum_{k, l} g[k, l] f[m + k, n + l]$$

# Image filtering

$$g[\cdot, \cdot] = \frac{1}{9} \begin{bmatrix} 1 & 1 & 1 \\ 1 & 1 & 1 \\ 1 & 1 & 1 \end{bmatrix}$$

$$f[\cdot, \cdot]$$

0	0	0	0	0	0	0	0	0	0
0	0	0	0	0	0	0	0	0	0
0	0	0	90	90	90	90	90	0	0
0	0	0	90	90	90	90	90	0	0
0	0	0	90	90	90	90	90	0	0
0	0	0	90	0	90	90	90	0	0
0	0	0	90	90	90	90	90	0	0
0	0	0	0	0	0	0	0	0	0
0	0	90	0	0	0	0	0	0	0
0	0	0	0	0	0	0	0	0	0

$$h[\cdot, \cdot]$$

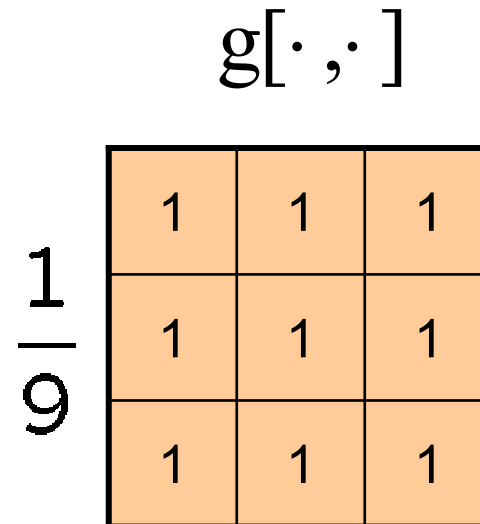
	0	10	20	30	30	30	20	10	
	0	20	40	60	60	60	40	20	
	0	30	60	90	90	90	60	30	
	0	30	50	80	80	90	60	30	
	0	30	50	80	80	90	60	30	
	0	20	30	50	50	60	40	20	
	10	20	30	30	30	30	20	10	
	10	10	10	0	0	0	0	0	

$$h[m, n] = \sum_{k, l} g[k, l] f[m + k, n + l]$$

# Box Filter

What does it do?

- Replaces each pixel with an average of its neighborhood
- Achieve smoothing effect (remove sharp features)

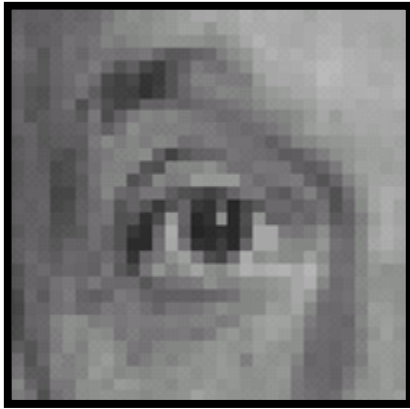


# Smoothing with box filter



One more on board...

# Practice with linear filters



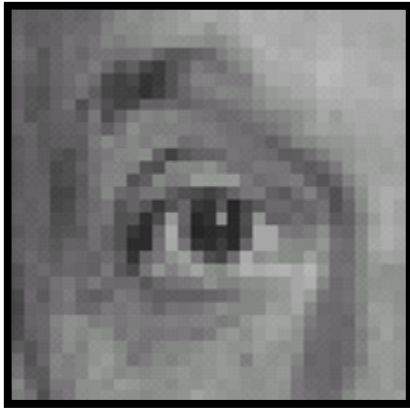
Original

0	0	0
0	1	0
0	0	0

?

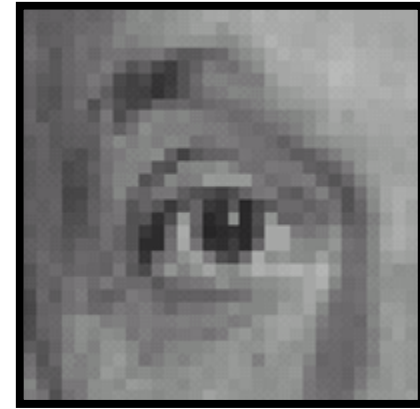


# Practice with linear filters



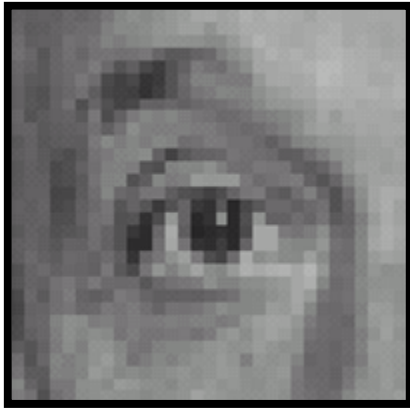
Original

0	0	0
0	1	0
0	0	0



Filtered  
(no change)

# Practice with linear filters

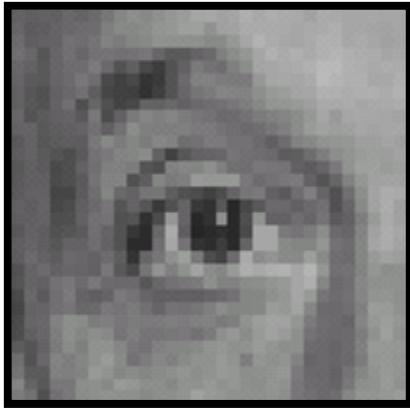


Original

0	0	0
0	0	1
0	0	0

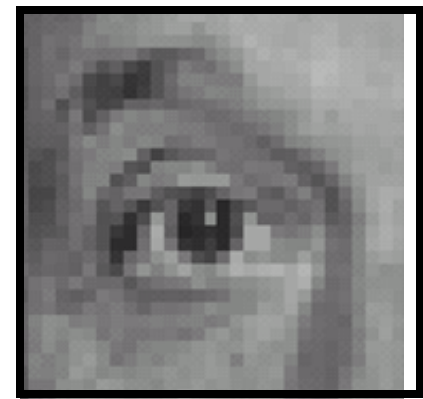
?

# Practice with linear filters



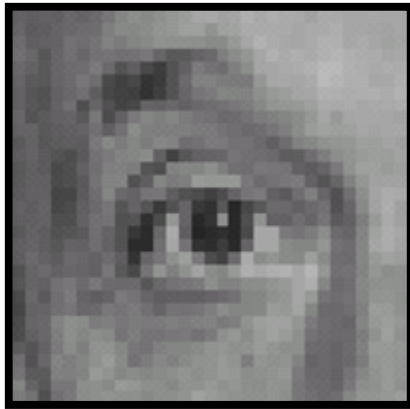
Original

0	0	0
0	0	1
0	0	0



Shifted left  
By 1 pixel

# Practice with linear filters



Original

0	0	0
0	2	0
0	0	0

-

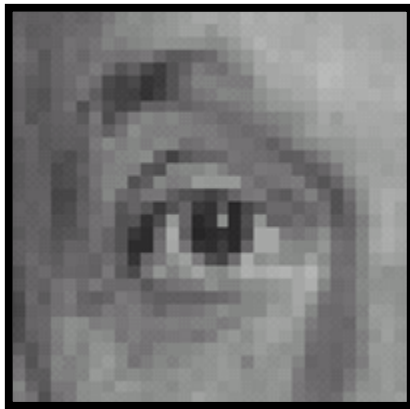
$\frac{1}{9}$

1	1	1
1	1	1
1	1	1

?

(Note that filter sums to 1)

# Practice with linear filters



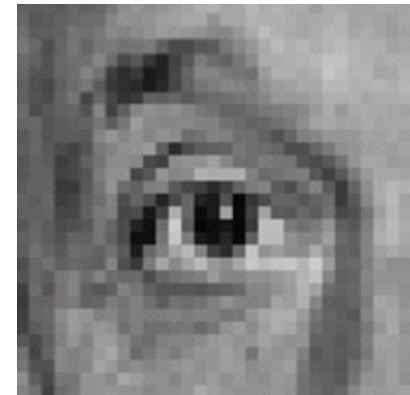
Original

0	0	0
0	2	0
0	0	0

-

$\frac{1}{9}$

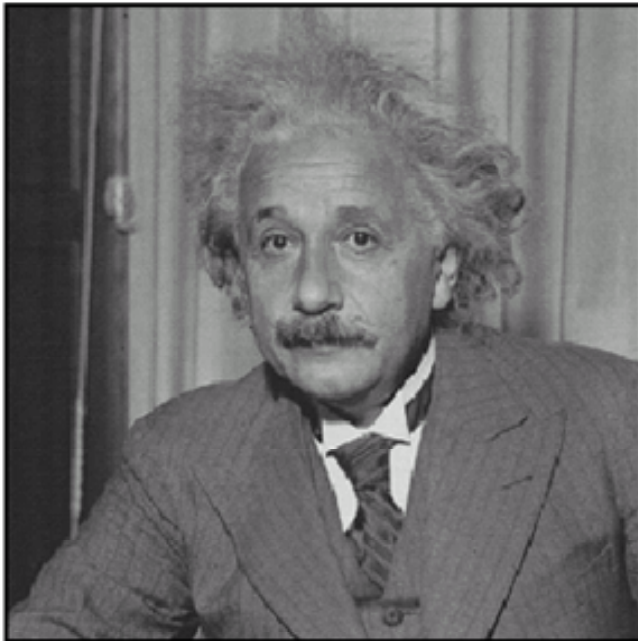
1	1	1
1	1	1
1	1	1



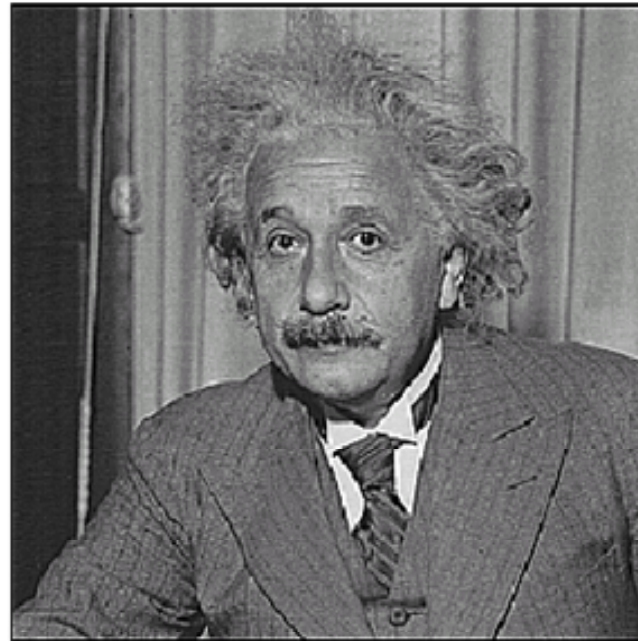
## Sharpening filter

- Accentuates differences with local average

# Sharpening

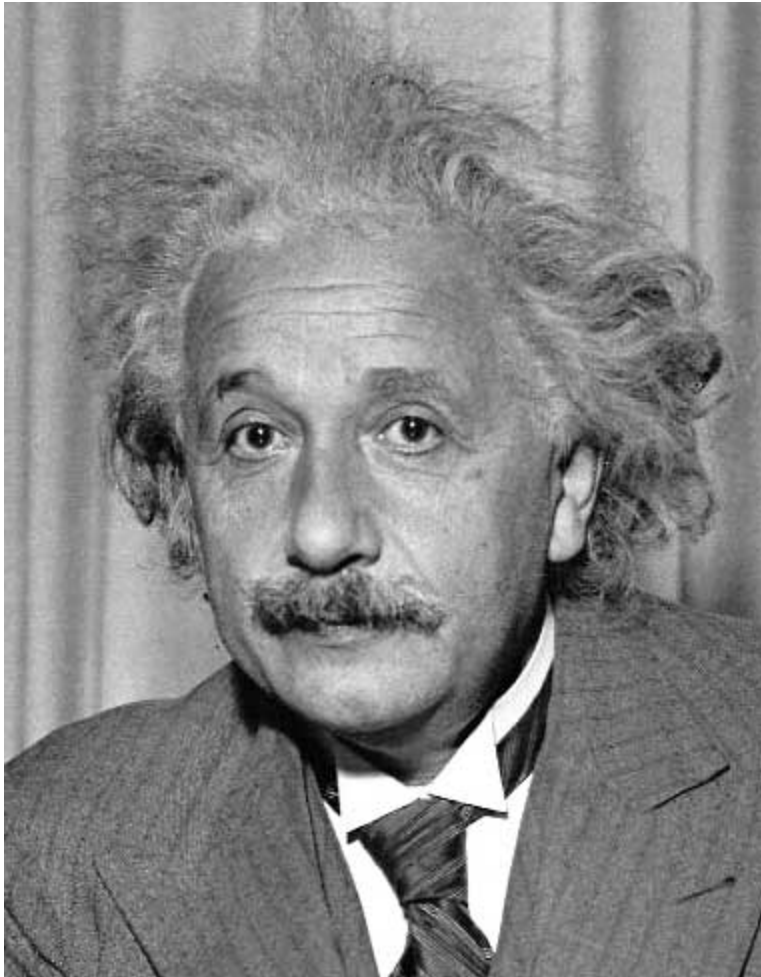


**before**



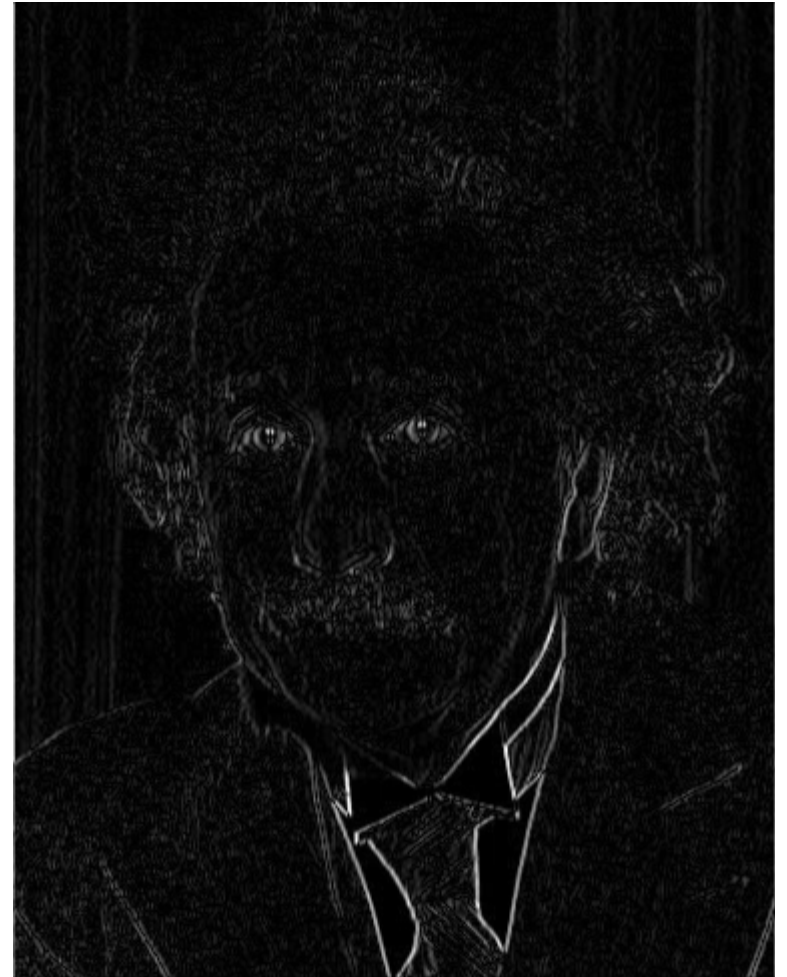
**after**

# Other filters



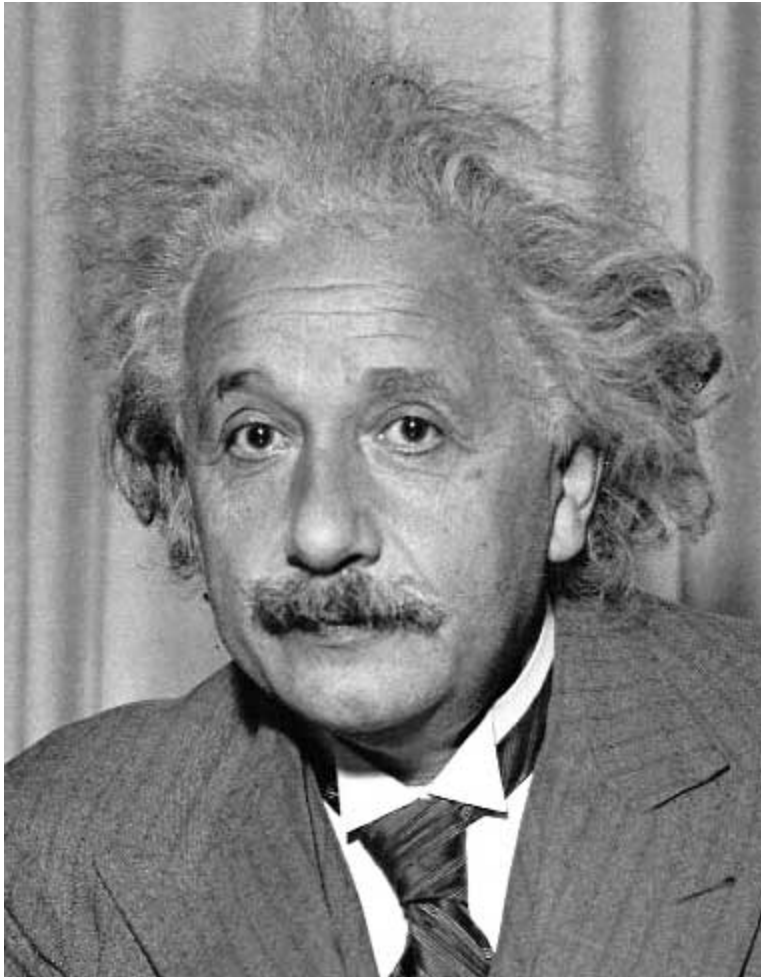
1	0	-1
2	0	-2
1	0	-1

Sobel



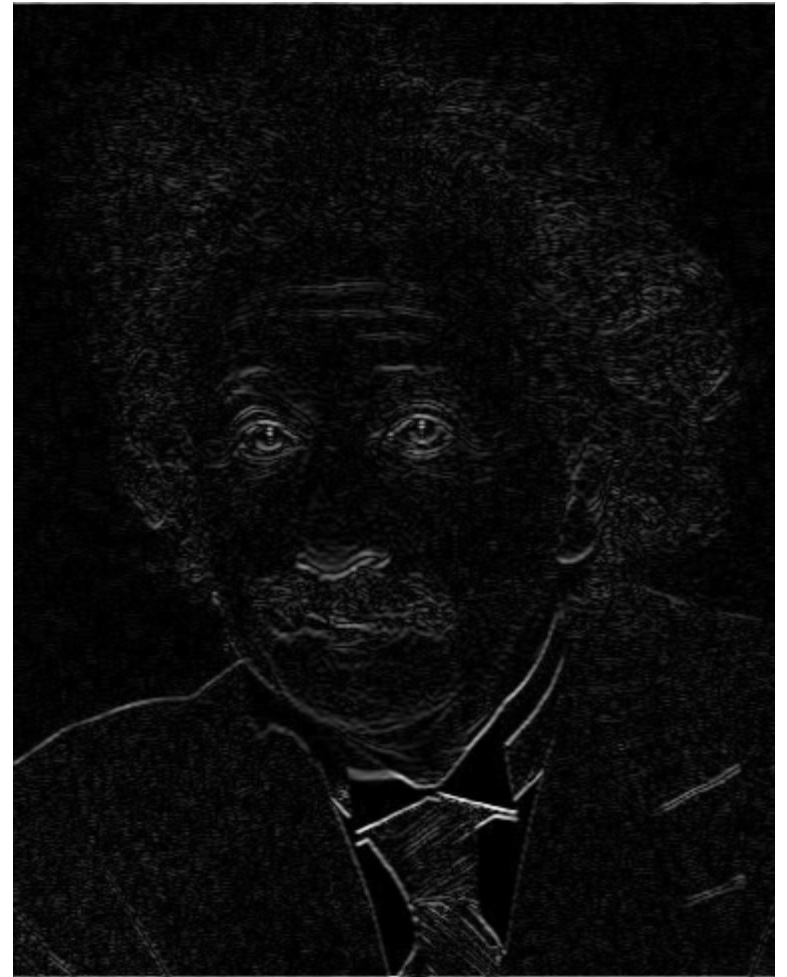
Vertical Edge  
(absolute value)

# Other filters



1	2	1
0	0	0
-1	-2	-1

Sobel



Horizontal Edge  
(absolute value)

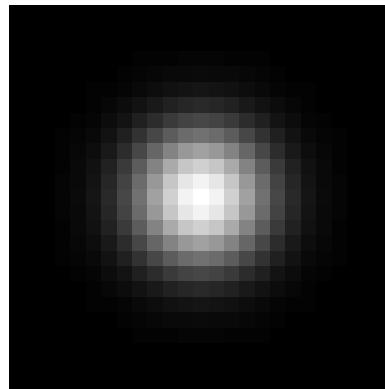
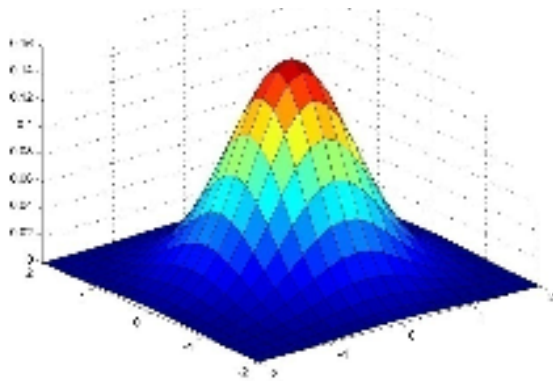


# How could we synthesize motion blur?

```
theta = 30; len = 20;  
fil = imrotate(ones(1, len), theta, 'bilinear');  
fil = fil / sum(fil(:));  
figure(2), imshow(imfilter(im, fil));
```

# Important filter: Gaussian

- Weight contributions of neighboring pixels by nearness

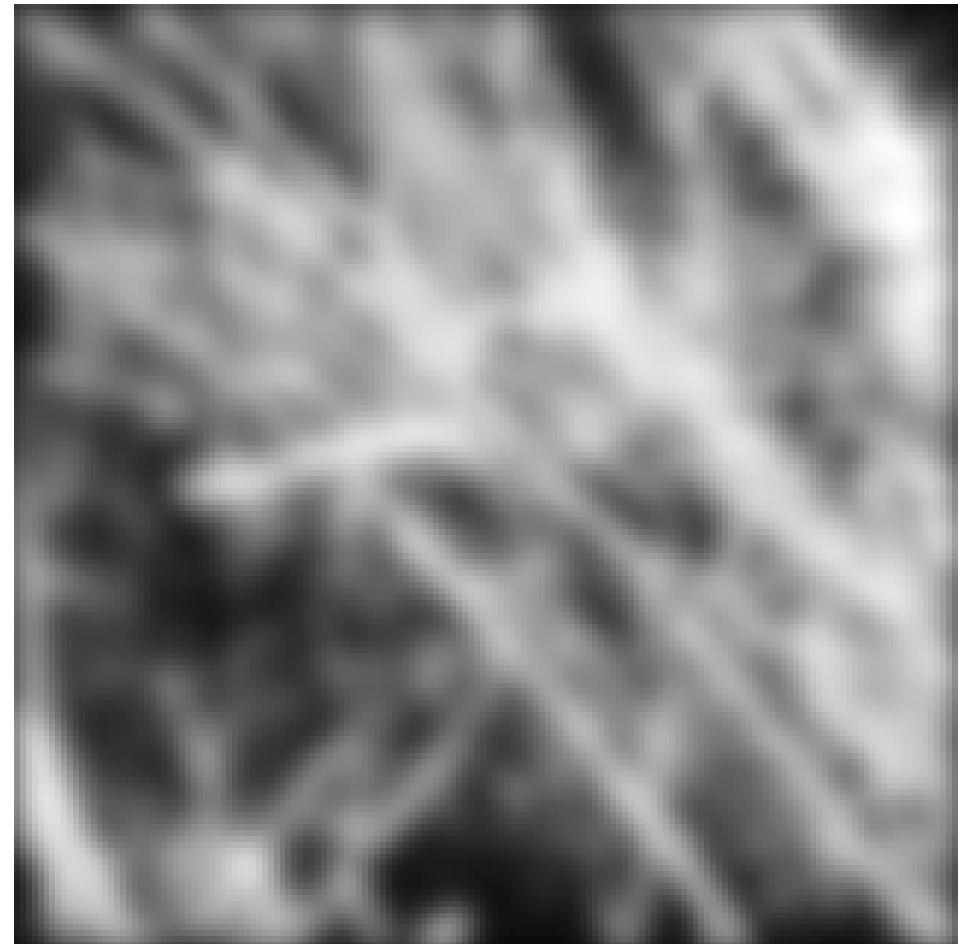


0.003	0.013	0.022	0.013	0.003
0.013	0.059	0.097	0.059	0.013
0.022	0.097	0.159	0.097	0.022
0.013	0.059	0.097	0.059	0.013
0.003	0.013	0.022	0.013	0.003

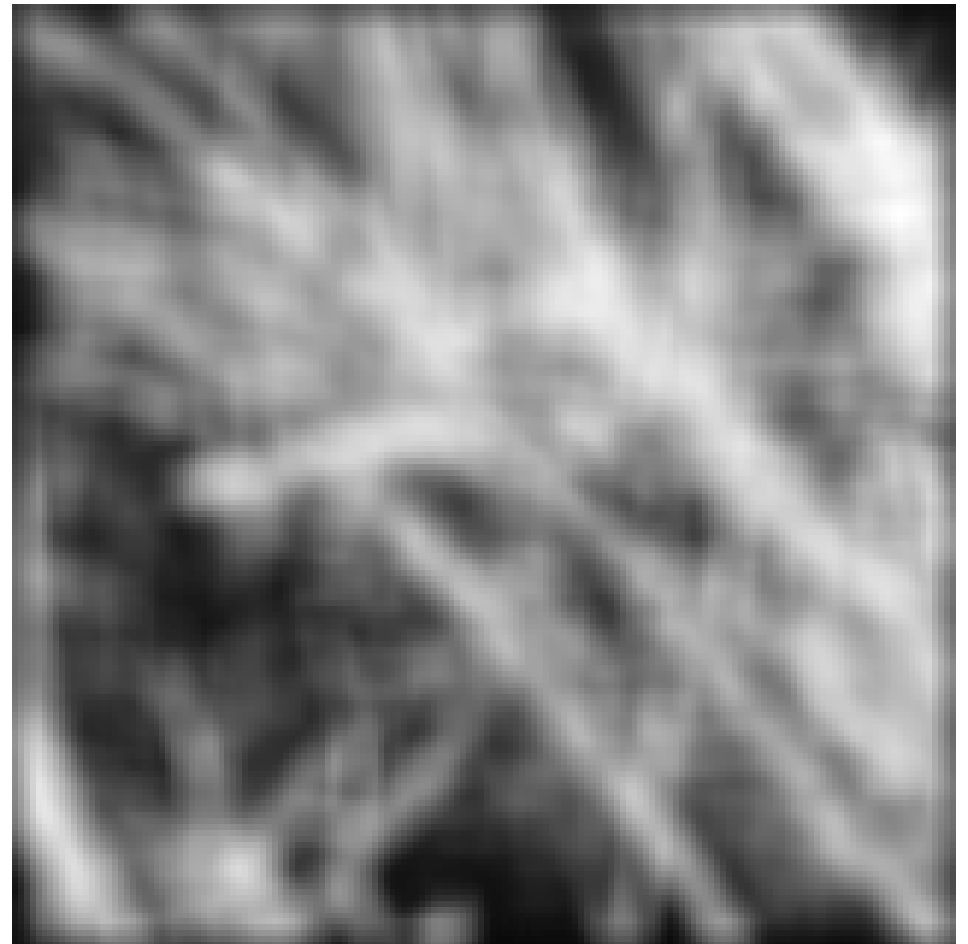
5 x 5,  $\sigma = 1$

$$G_{\sigma} = \frac{1}{2\pi\sigma^2} e^{-\frac{(x^2+y^2)}{2\sigma^2}}$$

# Smoothing with Gaussian filter



# Smoothing with box filter



# Gaussian filters

- Remove “high-frequency” components from the image (low-pass filter)
  - Images become more smooth
- Convolution with self is another Gaussian
  - So can smooth with small-width kernel, repeat, and get same result as larger-width kernel would have
  - Convoluting two times with Gaussian kernel of width  $\sigma$  is same as convoluting once with kernel of width  $\sigma\sqrt{2}$
- *Separable* kernel
  - Factors into product of two 1D Gaussians

# Separability of the Gaussian filter

$$\begin{aligned} G_{\sigma}(x, y) &= \frac{1}{2\pi\sigma^2} \exp\left(-\frac{x^2 + y^2}{2\sigma^2}\right) \\ &= \left(\frac{1}{\sqrt{2\pi}\sigma} \exp\left(-\frac{x^2}{2\sigma^2}\right)\right) \left(\frac{1}{\sqrt{2\pi}\sigma} \exp\left(-\frac{y^2}{2\sigma^2}\right)\right) \end{aligned}$$

The 2D Gaussian can be expressed as the product of two functions, one a function of  $x$  and the other a function of  $y$

In this case, the two functions are the (identical) 1D Gaussian

# Separability example

2D convolution  
(center location only)

$$\begin{bmatrix} 1 & 2 & 1 \\ 2 & 4 & 2 \\ 1 & 2 & 1 \end{bmatrix} * \begin{bmatrix} 2 & 3 & 3 \\ 3 & 5 & 5 \\ 4 & 4 & 6 \end{bmatrix}$$

The filter factors  
into a product of 1D  
filters:

$$\begin{bmatrix} 1 & 2 & 1 \\ 2 & 4 & 2 \\ 1 & 2 & 1 \end{bmatrix} = \begin{bmatrix} 1 \\ 2 \\ 1 \end{bmatrix} \times \begin{bmatrix} 1 & 2 & 1 \end{bmatrix}$$

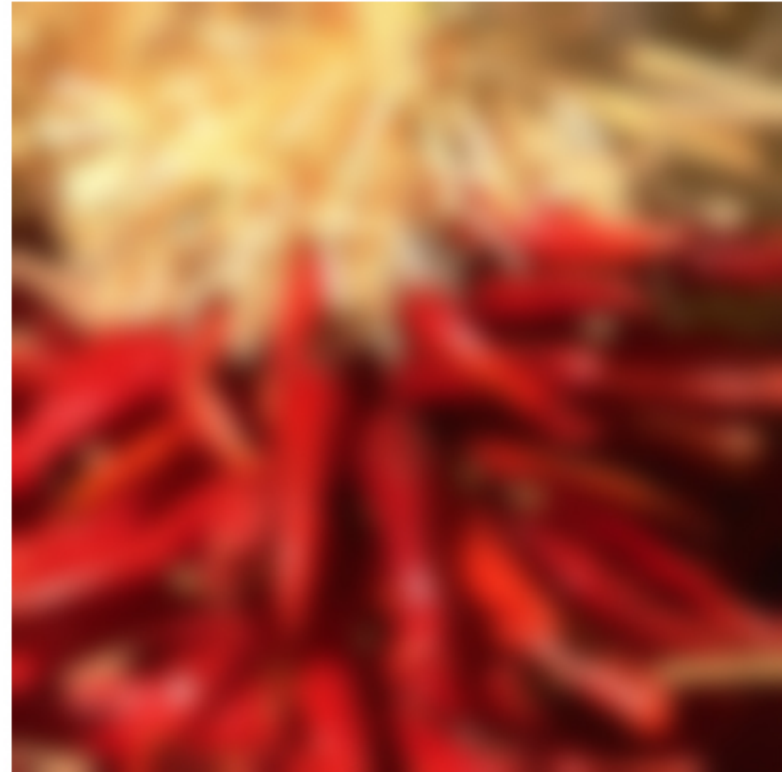
Perform convolution  
along rows:

$$\begin{bmatrix} 1 & 2 & 1 \end{bmatrix} * \begin{bmatrix} 2 & 3 & 3 \\ 3 & 5 & 5 \\ 4 & 4 & 6 \end{bmatrix} = \begin{bmatrix} & 11 & \\ & 18 & \\ & 18 & \end{bmatrix}$$

Followed by convolution  
along the remaining column:

# Practical matters

- What about near the edge?
  - the filter window falls off the edge of the image
  - need to extrapolate
  - methods:
    - clip filter (black)
    - wrap around
    - copy edge
    - reflect across edge





# Practical matters

## – methods (MATLAB):

- clip filter (black): `imfilter(f, g, 0)`
- wrap around: `imfilter(f, g, 'circular')`
- copy edge: `imfilter(f, g, 'replicate')`
- reflect across edge: `imfilter(f, g, 'symmetric')`

# Practical matters

- What is the size of the output?
- MATLAB: `filter2(g, f, shape)`
  - *shape* = 'full': output size is sum of sizes of *f* and *g*
  - *shape* = 'same': output size is same as *f*
  - *shape* = 'valid': output size is difference of sizes of *f* and *g*

